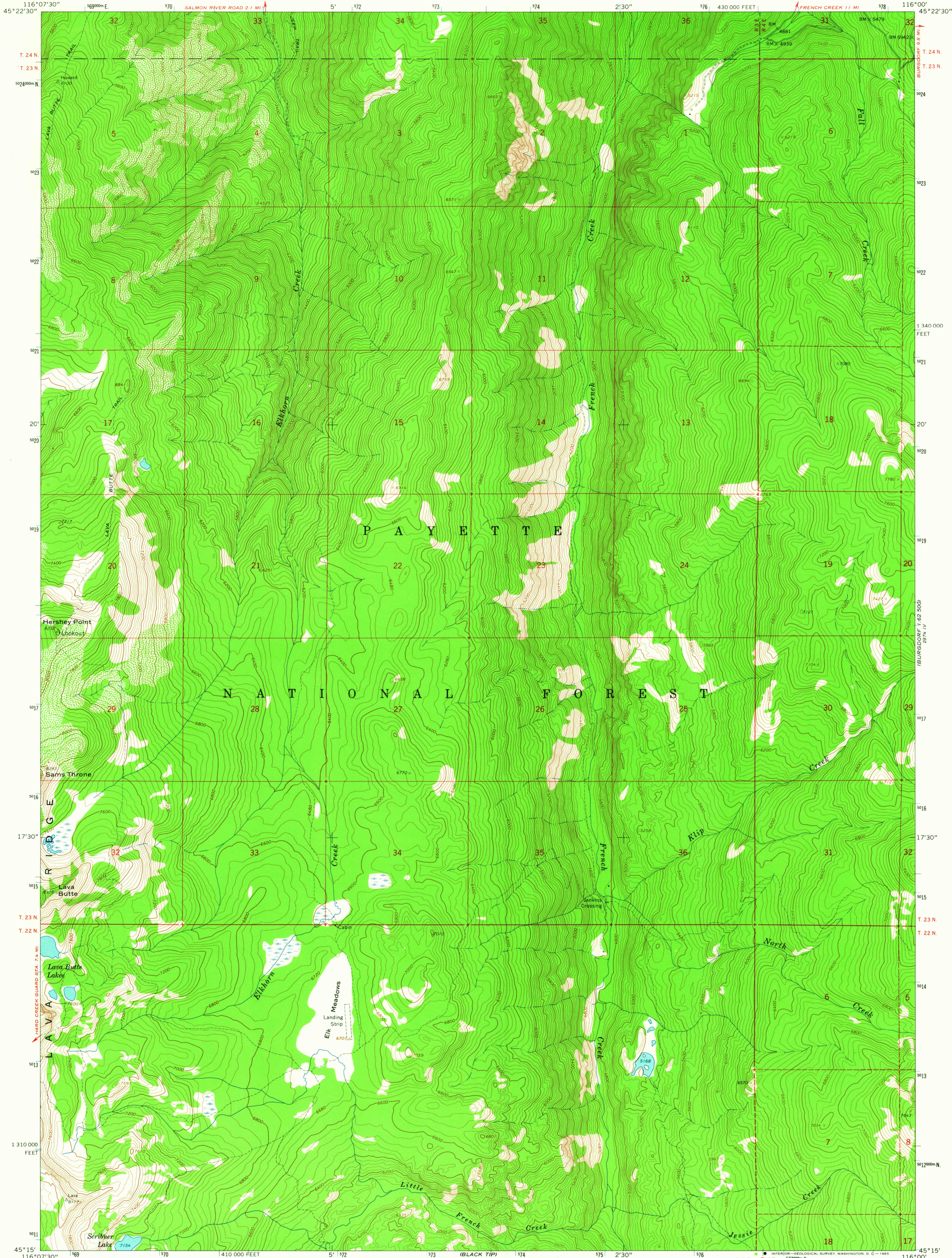
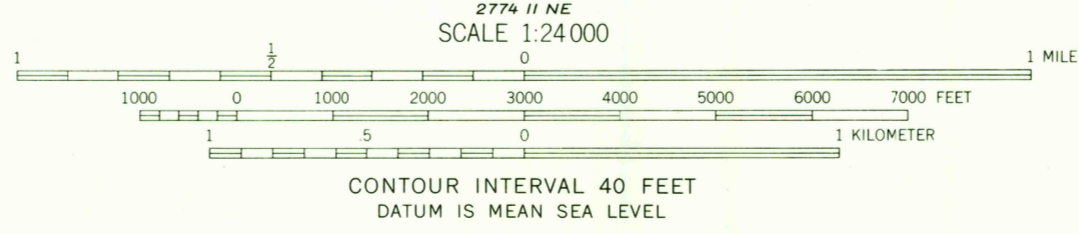


AMS 2774 IV  
BUREAU OF LAND MANAGEMENT



Mapped, edited, and published by the Geological Survey  
Control by USGS and USC&GS  
Topography by photogrammetric methods from aerial  
photographs taken 1959. Field checked 1963  
Polyconic projection. 1927 North American datum  
10,000-foot grid based on Idaho coordinate system, west zone  
1000-meter Universal Transverse Mercator grid ticks,  
zone 11, shown in blue  
Where omitted, land lines have not been established



USGS  
Historical File  
Topographic Division

ROAD CLASSIFICATION  
Light-duty ——— Unimproved dirt - - - - -

U.S.G.S. FILE COPY TOPOGRAPHIC DIVISION  
HERSHEY POINT, IDAHO  
N4515-W11600/7.5  
1963  
AMS 2774 I SE-SERIES V893

THIS MAP COMPLIES WITH NATIONAL MAP ACCURACY STANDARDS  
FOR SALE BY U. S. GEOLOGICAL SURVEY, DENVER 25, COLORADO OR WASHINGTON 25, D. C.  
A FOLDER DESCRIBING TOPOGRAPHIC MAPS AND SYMBOLS IS AVAILABLE ON REQUEST

2005  
FEB 15 1965