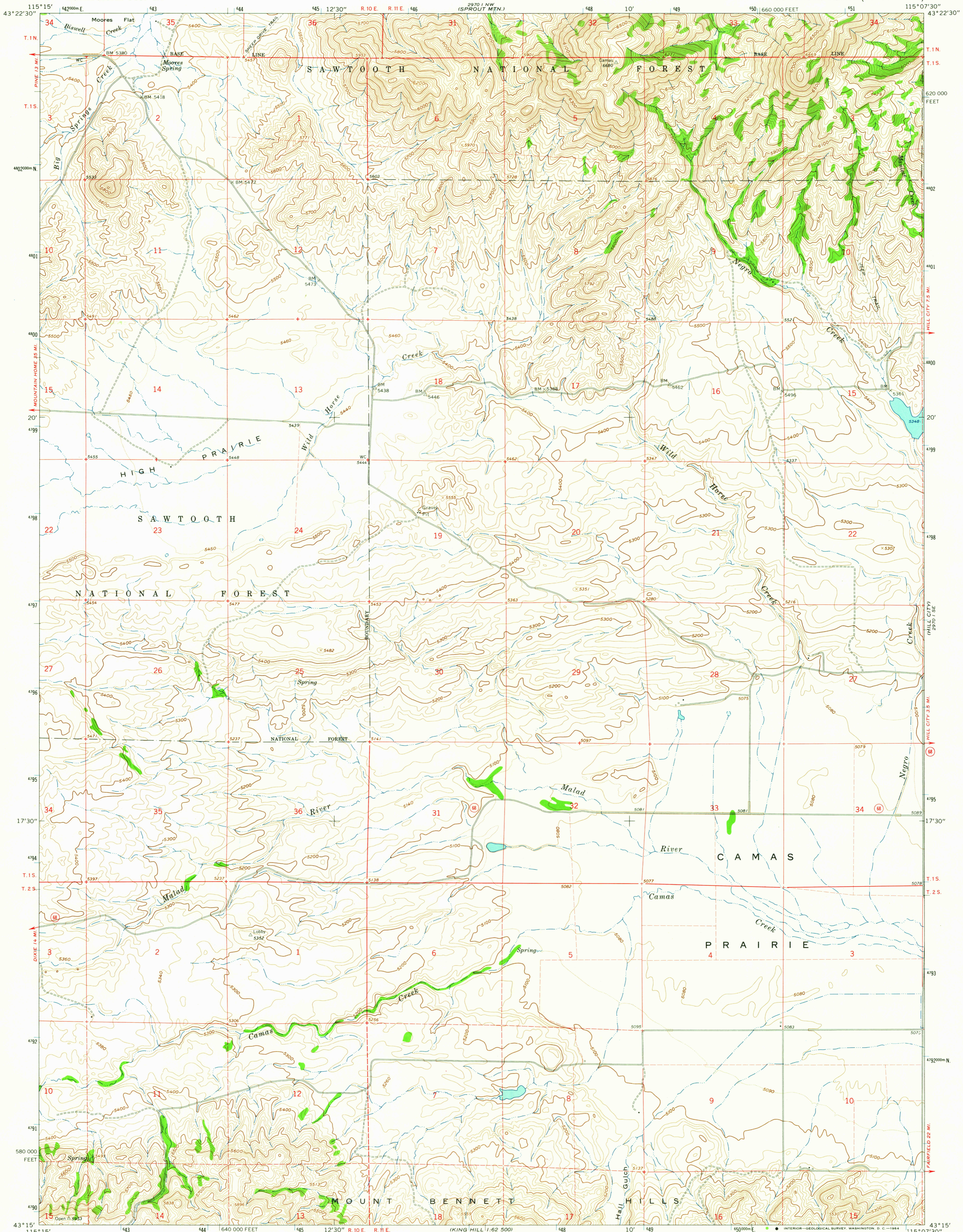
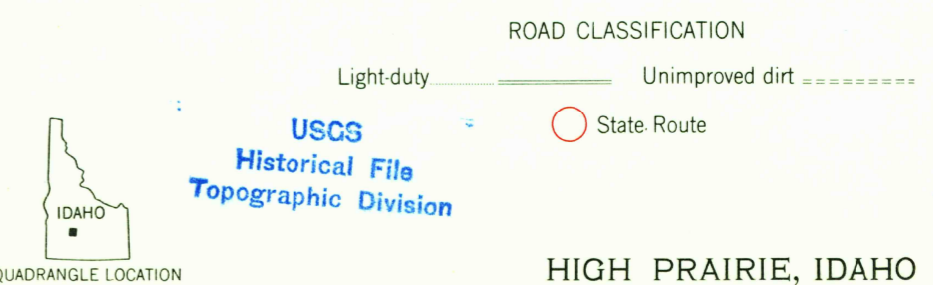
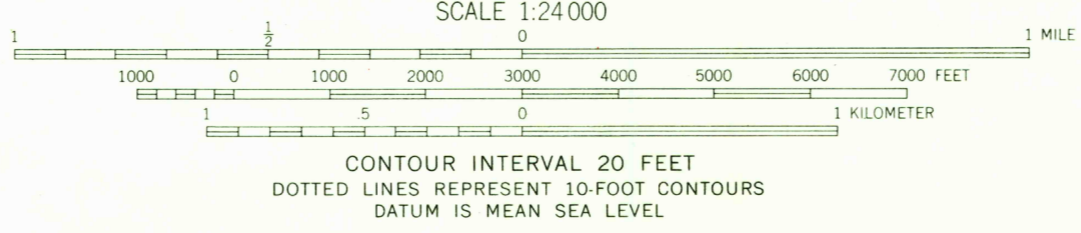
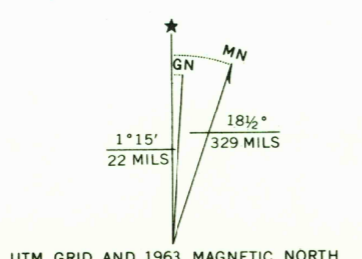


2970 N.W.
115° 07' 30" W
DEER MOUNTAIN



Mapped by the U. S. Forest Service
Edited and published by the Geological Survey
Control by USGS, USC&GS, and U. S. Forest Service
Topography by photogrammetric methods from aerial
photographs taken 1951 and 1957. Field checked by USGS 1963
Polyconic projection. 1927 North American datum
10,000-foot grid based on Idaho coordinate system, west zone
1000-meter Universal Transverse Mercator grid ticks,
zone 11, shown in blue
Fine red dashed lines indicate selected fence lines



THIS MAP COMPLIES WITH NATIONAL MAP ACCURACY STANDARDS
FOR SALE BY U. S. GEOLOGICAL SURVEY, DENVER 25, COLORADO OR WASHINGTON 25, D. C.
A FOLDER DESCRIBING TOPOGRAPHIC MAPS AND SYMBOLS IS AVAILABLE ON REQUEST

HIGH PRAIRIE, IDAHO
N4315-W11507.5/7.5
1963
AMS 2970 I SW—SERIES V893

1920
U.S.G.S.
FILE COPY
TOPOGRAPHIC DIVISION

JUL 7 1964