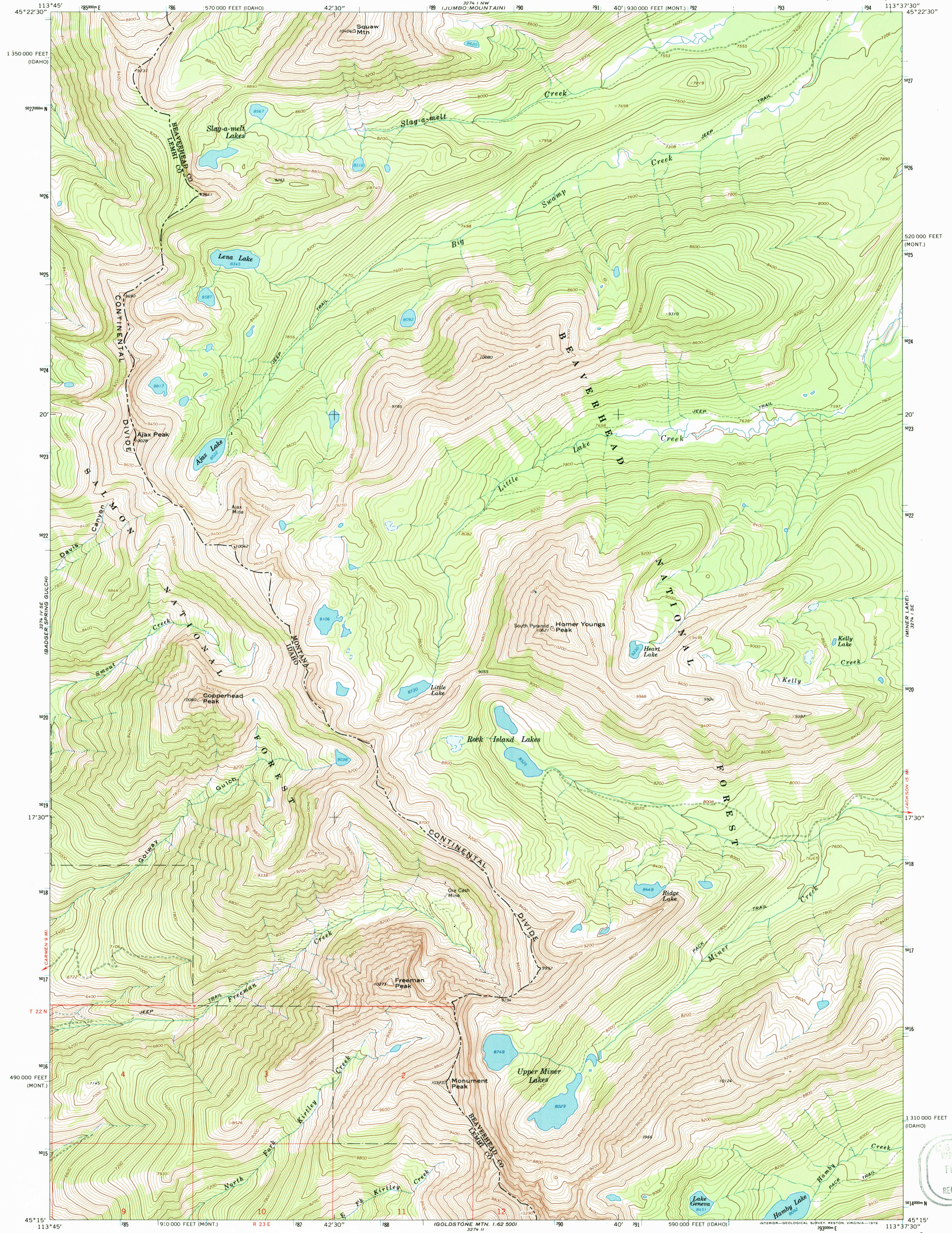


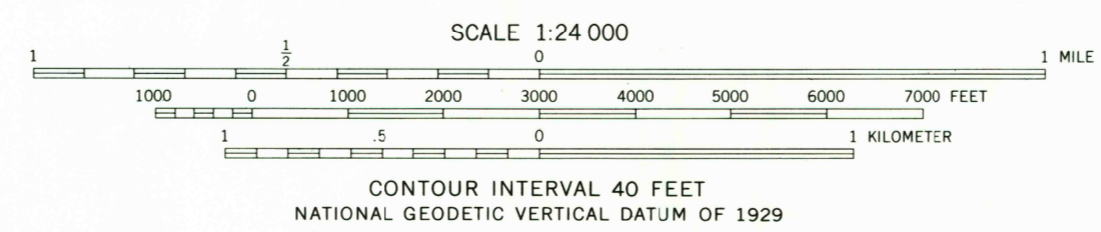
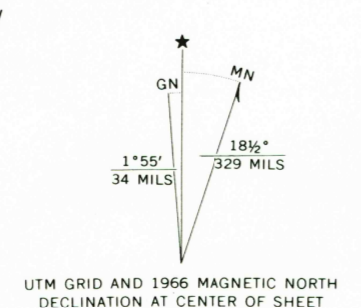
UNITED STATES
DEPARTMENT OF THE INTERIOR
GEOLOGICAL SURVEY

HOMER YOUNGS PEAK QUADRANGLE
MONTANA-IDAHO
7.5 MINUTE SERIES (TOPOGRAPHIC)



Mapped, edited, and published by the Geological Survey
Control by USGS and USC&GS

Topography by photogrammetric methods from aerial photographs taken 1965. Field checked 1966
Polyconic projection. 1927 North American datum 10,000-foot grids based on Montana coordinate system, south zone and Idaho coordinate system, central zone 1000-meter Universal Transverse Mercator grid ticks, zone 12, shown in blue
Where omitted, land lines have not been established
There may be private inholdings within the boundaries of the National or State reservations shown on this map



HOMER YOUNGS PEAK, MONT. - IDAHO
N4515-W11337.5/7.5

1966
DMA 3274 1 SW-SERIES V894

