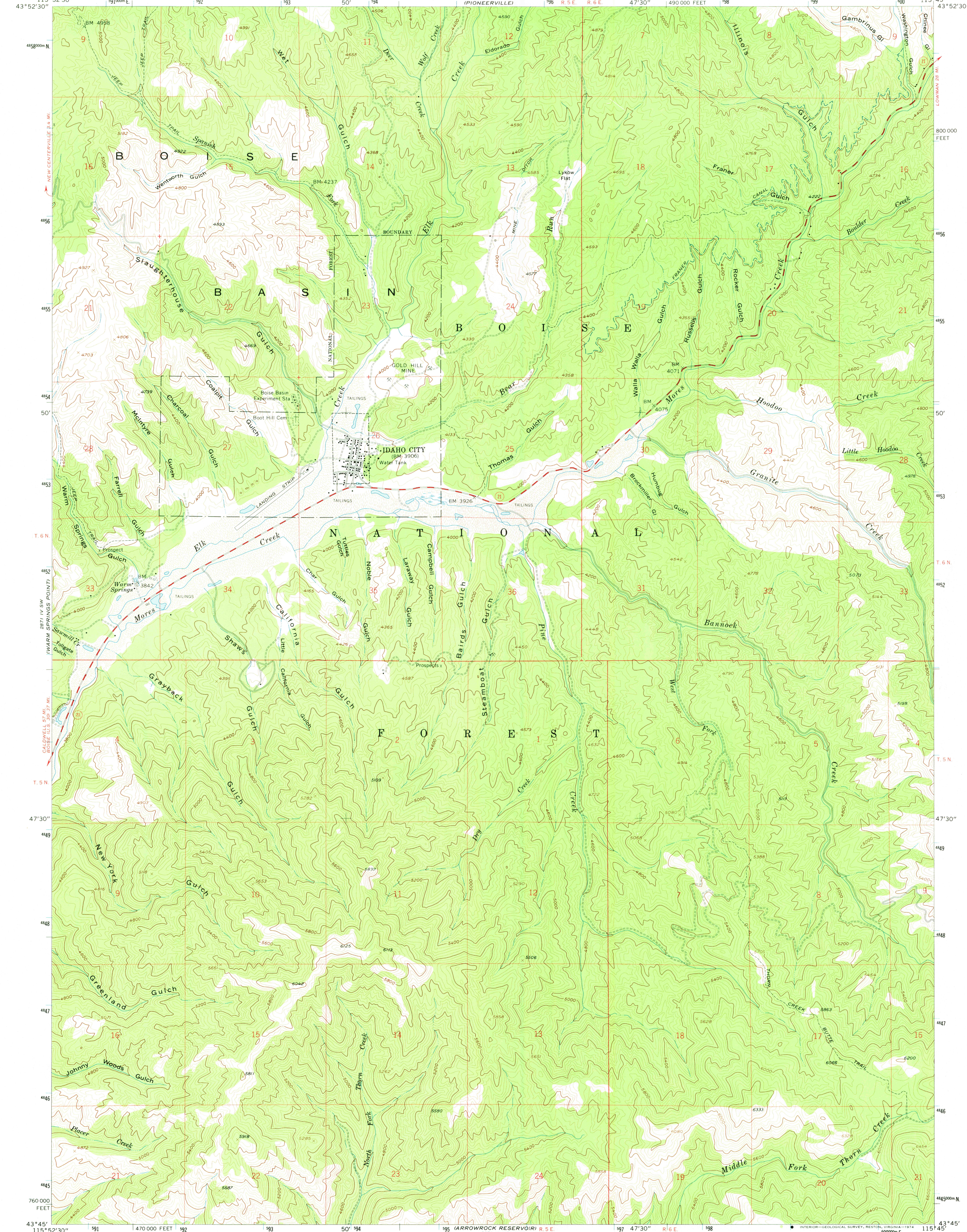
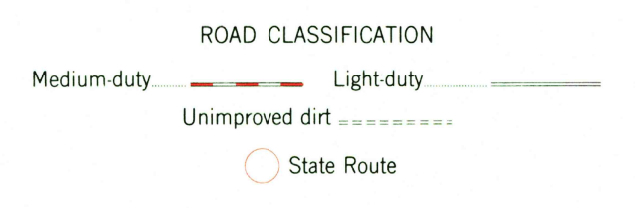
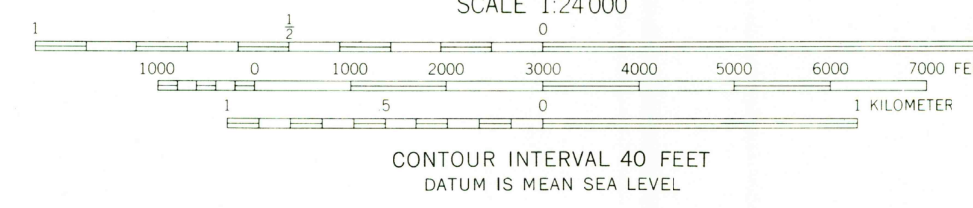
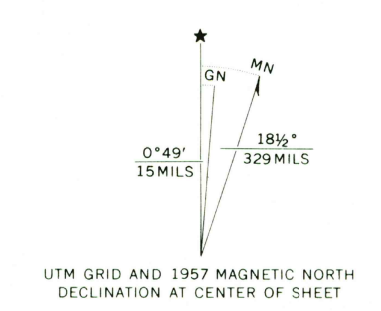


2871 IV NW
(PLACEVILLE)

2871 IV NE
(PIONEERVILLE)



Mapped by U. S. Forest Service
Edited and published by the Geological Survey
Control by USGS and USC&GS
Topography from aerial photographs by KEK plotter
Aerial photographs taken 1937-1938 and 1946
Field checked by USGS 1957
Polycon projection. 1927 North American datum
10,000 foot grid based on Idaho coordinate system,
west zone
1000-meter Universal Transverse Mercator grid ticks,
zone 11, shown in blue
Unchecked elevations are shown in brown



FOR SALE BY U. S. GEOLOGICAL SURVEY, DENVER, COLORADO 80225, OR RESTON, VIRGINIA 22092
A FOLDER DESCRIBING TOPOGRAPHIC MAPS AND SYMBOLS IS AVAILABLE ON REQUEST

IDAHO CITY, IDAHO MAR 2 2 1974
N4345—W11545/7.5

1957
AMS 2871 IV SE—SERIES V893

2030