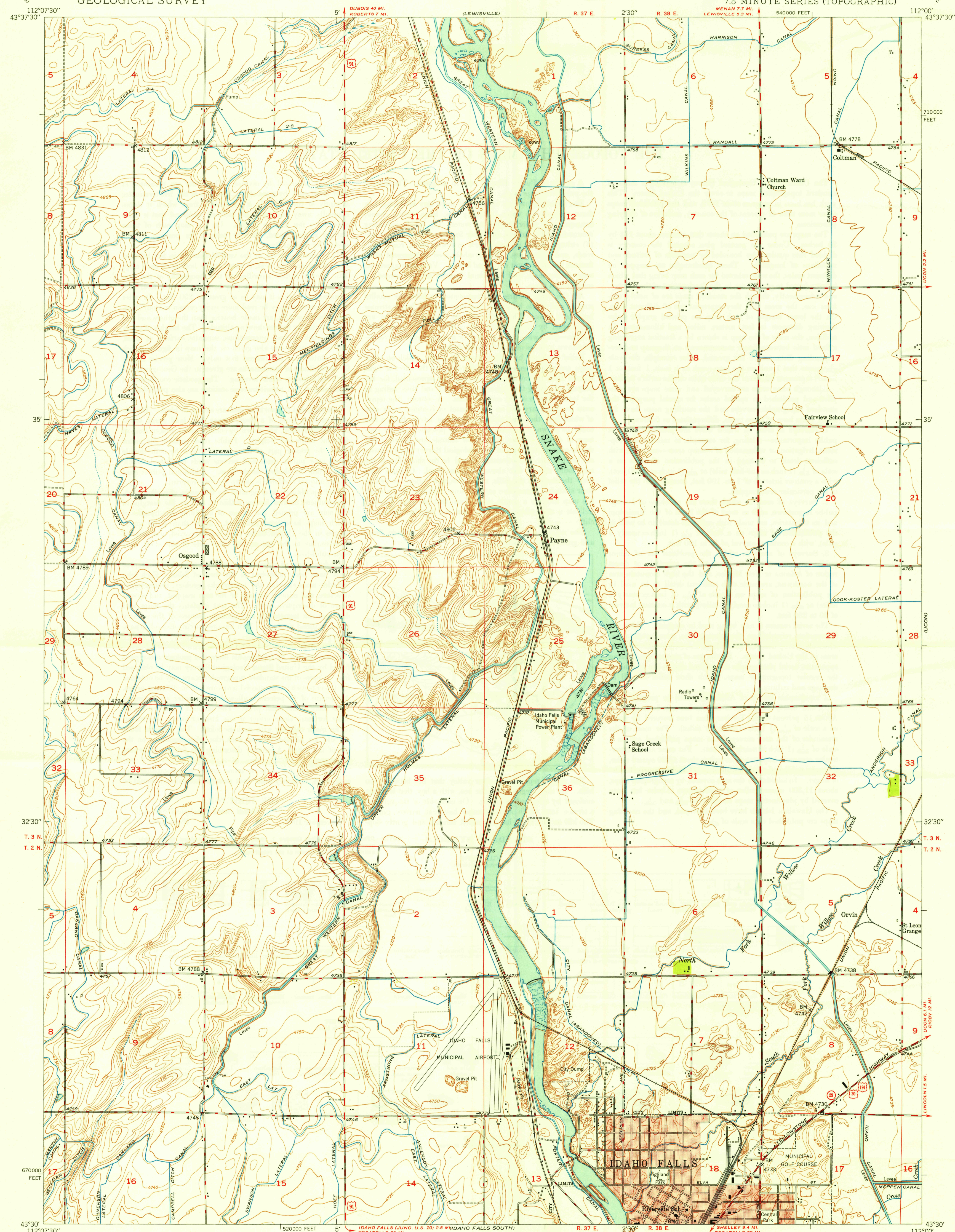


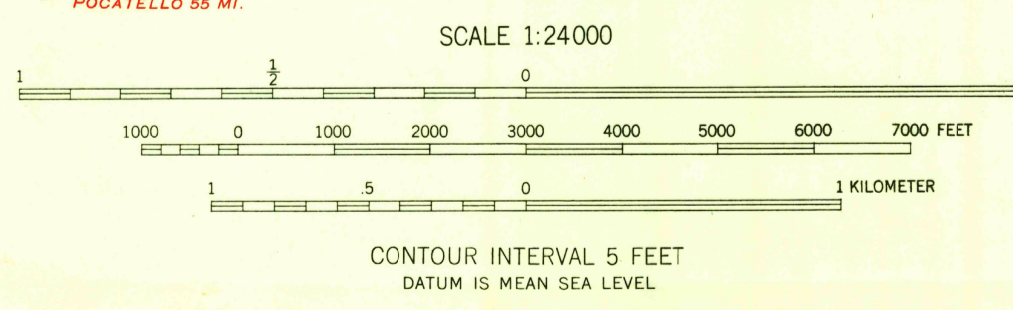
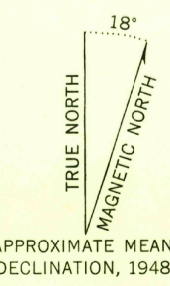
U.S.G.S.  
FILE COPY  
Inspection and Editing

UNITED STATES  
DEPARTMENT OF THE INTERIOR  
GEOLOGICAL SURVEY

IDAHO FALLS NORTH QUADRANGLE  
IDAHO-BONNEVILLE CO.  
7.5 MINUTE SERIES (TOPOGRAPHIC)



Maped, edited, and published by the Geological Survey  
Control by USGS and USC&GS  
Culture and drainage by multiplex methods  
from aerial photographs taken 1946  
Topography by plane-table methods 1948  
Polyconic projection, 1927 North American datum  
10,000-foot grid based on Idaho coordinate system,  
east zone  
Red tint indicates area in which only  
landmark buildings are shown



ROAD CLASSIFICATION

HARD-SURFACE ALL WEATHER ROADS	DRY WEATHER ROADS
Heavy-duty — <b>4 LANE IS LANE</b>	Improved dirt — — — — —
Medium-duty — <b>4 LANE IS LANE</b>	Unimproved dirt — — — — —
Loose-surface, graded, or narrow hard-surface — — — — —	
U. S. Route	State Route

U.S.G.S.  
FILE COPY  
Inspection and Editing

IDAHO FALLS NORTH, IDAHO  
N4330-W11200/7.5  
EDITION OF 1949

NOV 2 1949