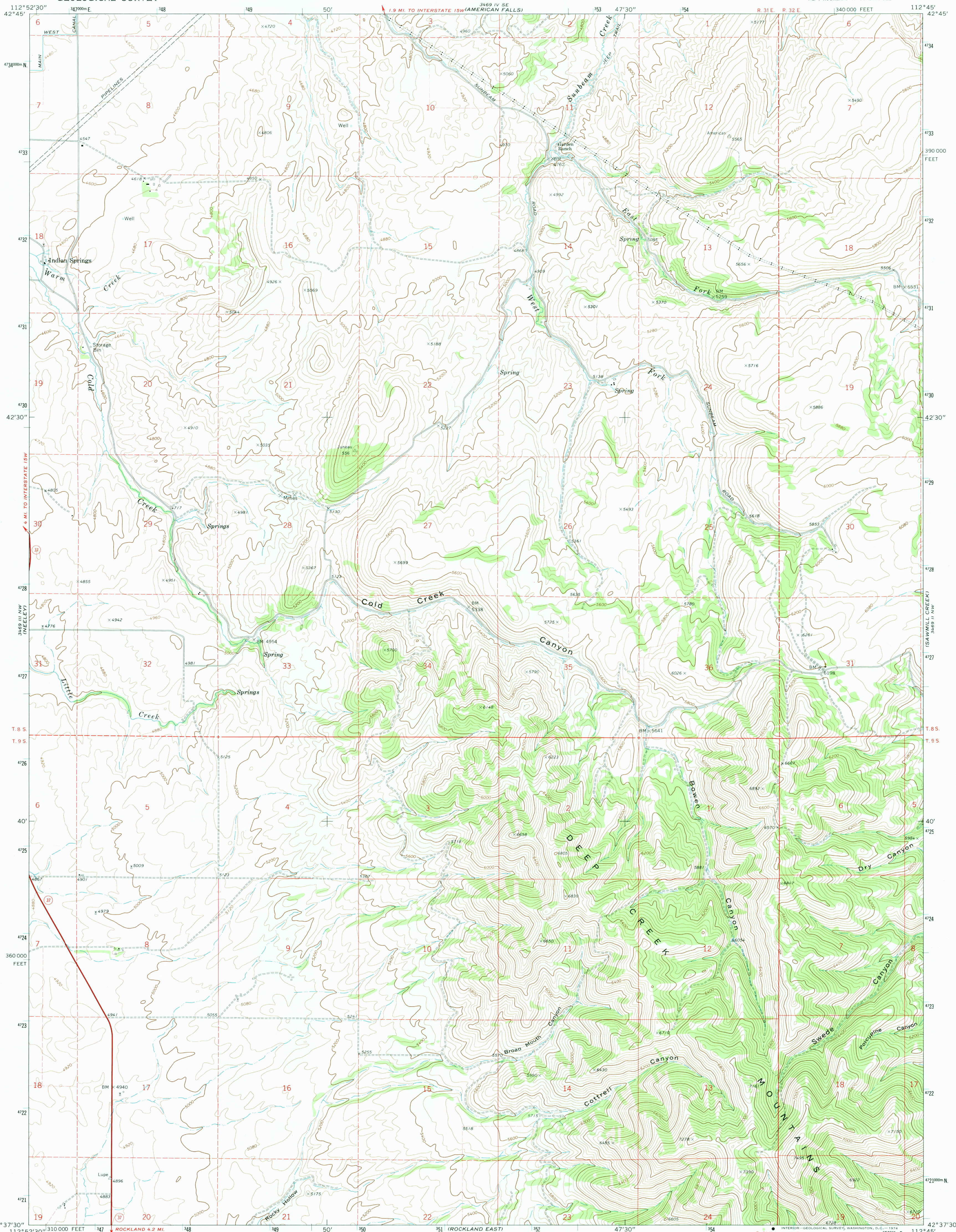


UNITED STATES
DEPARTMENT OF THE INTERIOR
GEOLOGICAL SURVEY

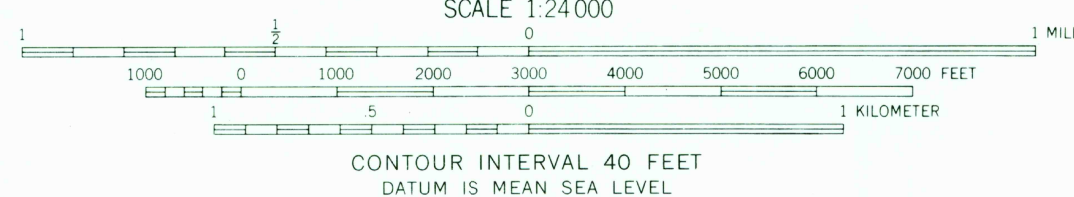
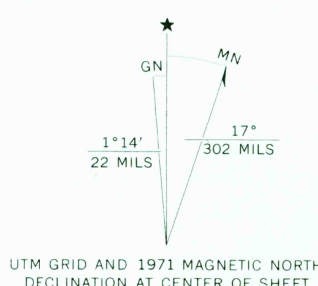
INDIAN SPRINGS QUADRANGLE
IDAHO—POWER CO.
7.5 MINUTE SERIES (TOPOGRAPHIC)

NE 1/4 ROCKLAND 15' QUADRANGLE

(WHEATGRASS BENCH)



Mapped, edited, and published by the Geological Survey
Control by USGS and USC&GS
Topography by photogrammetric methods from aerial
photographs taken 1969. Field checked 1971
Projection and 10,000-foot grid ticks: Idaho coordinate
system, east zone (transverse Mercator)
1000-meter Universal Transverse Mercator grid ticks,
zone 12, shown in blue. 1927 North American datum
Fine red dashed lines indicate selected fence lines



ROAD CLASSIFICATION
Primary highway, hard surface ————
Secondary highway, hard surface ————
Light-duty road, hard or improved surface ————
Unimproved road ————
Interstate Route ————
U. S. Route ————
State Route ————



INDIAN SPRINGS, IDAHO
NE 1/4 ROCKLAND 15' QUADRANGLE
N4237.5—W11245.7/5

1971

AMS 3469 III NE—SERIES V893

THIS MAP COMPLIES WITH NATIONAL MAP ACCURACY STANDARDS
FOR SALE BY U. S. GEOLOGICAL SURVEY, DENVER, COLORADO 80225, OR WASHINGTON, D. C. 20242
A FOLDER DESCRIBING TOPOGRAPHIC MAPS AND SYMBOLS IS AVAILABLE ON REQUEST

DER 11 1973

2540