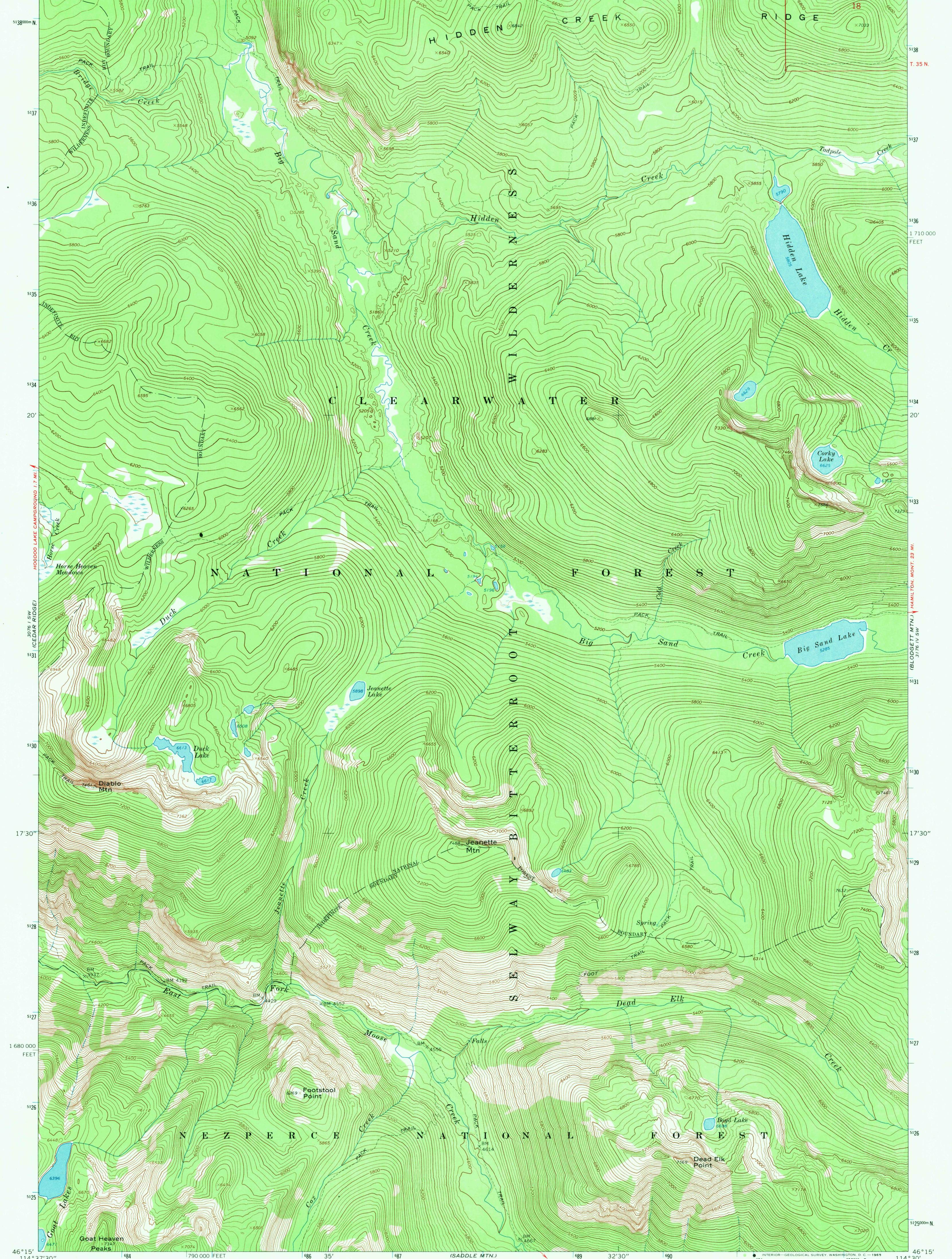


UNITED STATES  
DEPARTMENT OF THE INTERIOR  
GEOLOGICAL SURVEY

JEANETTE MTN. QUADRANGLE  
IDAHO-IDAHO CO.  
7.5 MINUTE SERIES (TOPOGRAPHIC)

114° 37' 30" 1830000 E COLT CREEK CAMPGROUND 8 MI. 185 35' 186 3076 I NE (SAVAGE RIDGE) 188 32' 30" 190 R 15 E 810 000 FEET R 16 E 192 114° 30' 46° 22' 30"



Mapped, edited, and published by the Geological Survey

Control by USGS and USC&GS

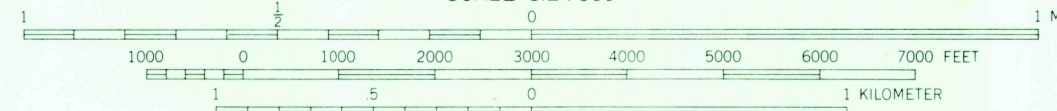
Topography by photogrammetric methods from aerial photographs taken 1965. Field checked 1966

Polyconic projection. 1927 North American datum

10,000-foot grid based on Idaho coordinate system, west zone

1000-meter Universal Transverse Mercator grid ticks, zone 11, shown in blue

Where omitted, land lines have not been established



CONTOUR INTERVAL 40 FEET  
DOTTED LINES REPRESENT 20 FOOT CONTOURS  
DATUM IS MEAN SEA LEVEL

ROAD CLASSIFICATION  
Trails

USGS  
Historical File  
Topographic Division



JEANETTE MTN., IDAHO  
N4615-W11430/7.5

1966

AMS 3076 I SE-SERIES V893

THIS MAP COMPLIES WITH NATIONAL MAP ACCURACY STANDARDS  
FOR SALE BY U. S. GEOLOGICAL SURVEY, DENVER, COLORADO 80225, OR WASHINGTON, D. C. 20242  
A FOLDER DESCRIBING TOPOGRAPHIC MAPS AND SYMBOLS IS AVAILABLE ON REQUEST

U.S.G.S.  
FILE COPY  
TOPOGRAPHIC DIVISION

2648

SEP 12 1969