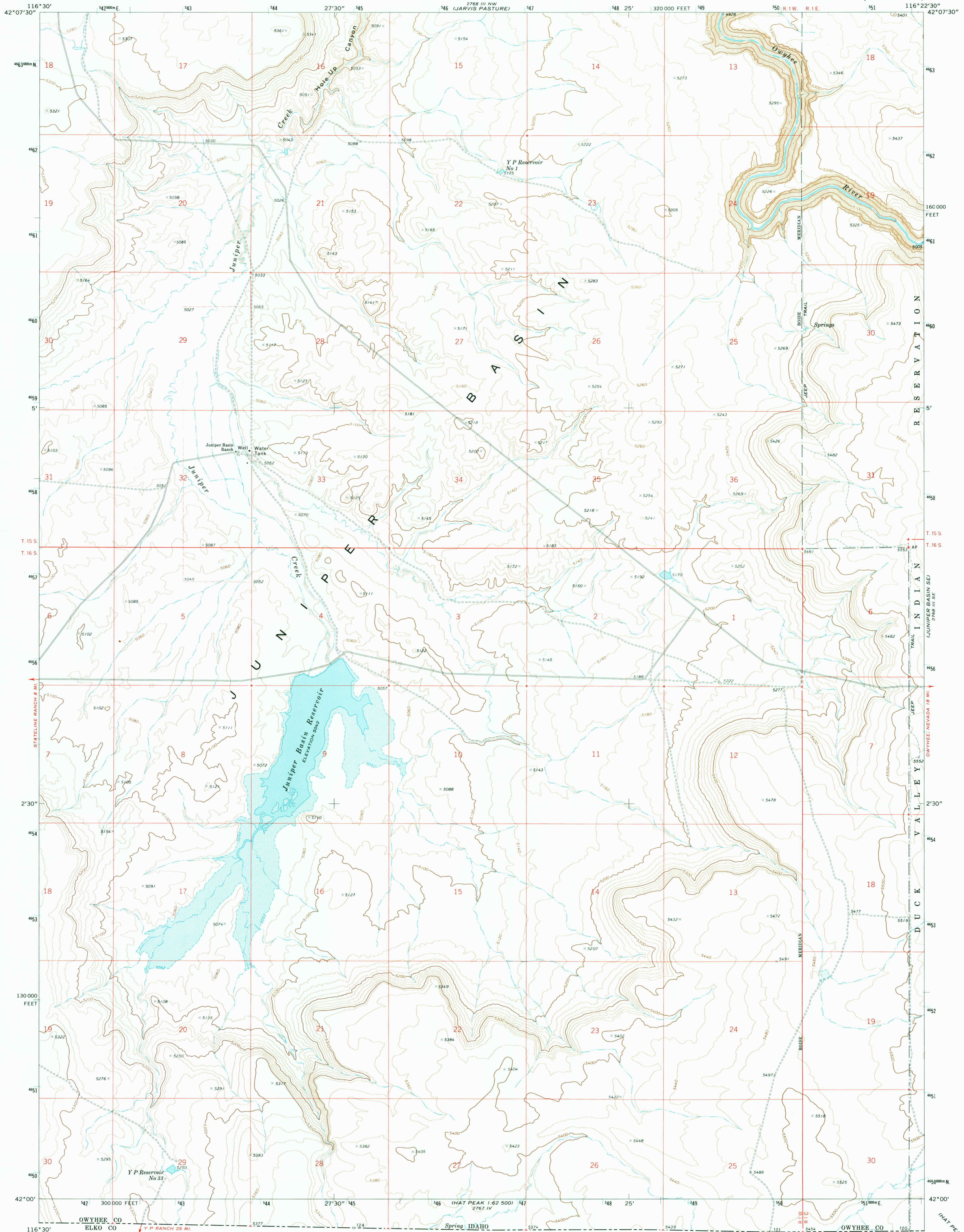
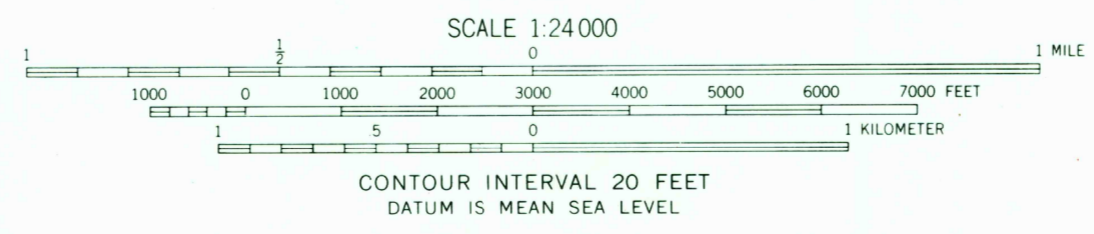
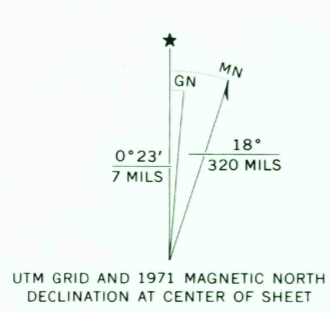


2768 III NE
(ROSS LAKE)



Mapped, edited, and published by the Geological Survey
Control by USGS and USC&GS
Topography by photogrammetric methods from aerial
photographs taken 1969. Field checked 1971
Projection and 10,000-foot grid ticks: Idaho coordinate
system, west zone (transverse Mercator)
1000-meter Universal Transverse Mercator grid ticks,
zone 11, shown in blue. 1927 North American datum
Fine red dashed lines indicate selected fence lines
Areas covered by dashed light-blue pattern are subject
to controlled inundation



CONTOUR INTERVAL 20 FEET
DATUM IS MEAN SEA LEVEL



ROAD CLASSIFICATION

| | |
|---------------------------------|---|
| Primary highway, hard surface | Light duty road, hard or improved surface |
| Secondary highway, hard surface | Unimproved road |
| Interstate Route | U. S. Route |
| | State Route |

THIS MAP COMPLIES WITH NATIONAL MAP ACCURACY STANDARDS
FOR SALE BY U. S. GEOLOGICAL SURVEY, DENVER, COLORADO 80225, OR RESTON, VIRGINIA 22092
A FOLDER DESCRIBING TOPOGRAPHIC MAPS AND SYMBOLS IS AVAILABLE ON REQUEST

USGS
Historical File
Topographic Division

JUNIPER BASIN, IDAHO
N4200-W11622.5/7.5
1971

AMS 2768 III SW-SERIES V893

JUL 11 1974
3100