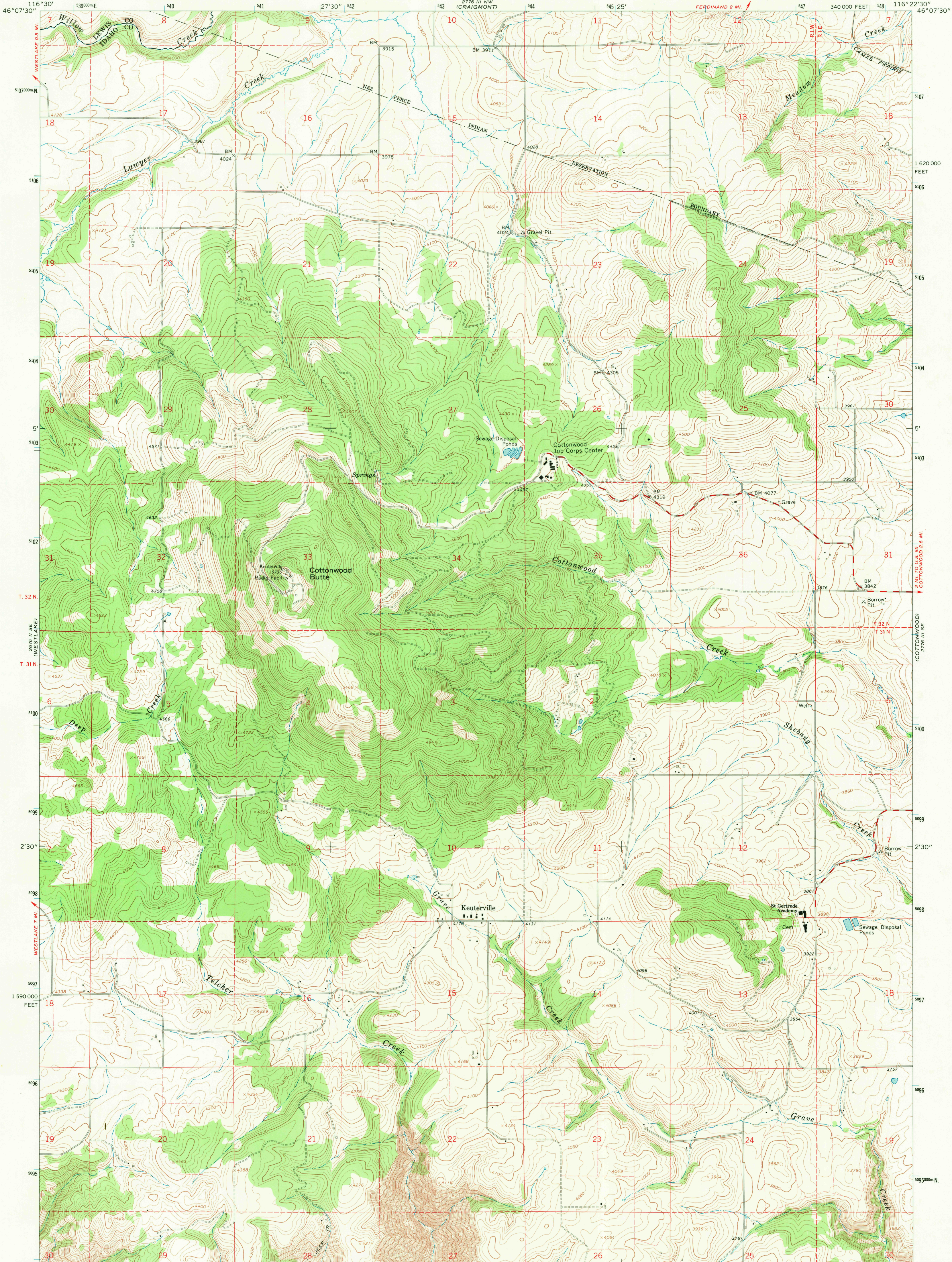
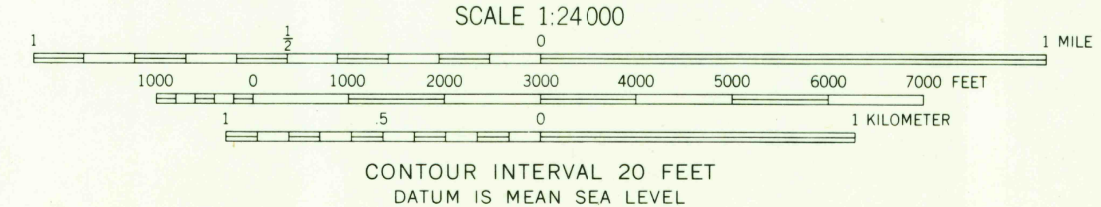
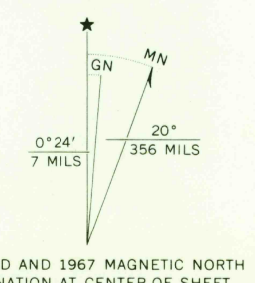


UNITED STATES
DEPARTMENT OF THE INTERIOR
GEOLOGICAL SURVEY

KEUTERVILLE QUADRANGLE
IDAHO
7.5 MINUTE SERIES (TOPOGRAPHIC)

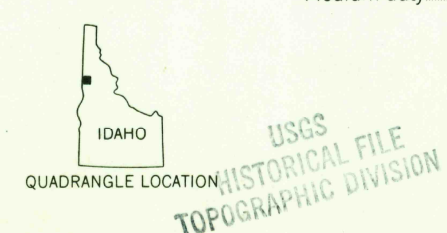


Mapped, edited, and published by the Geological Survey
Control by USGS and USC&GS
Topography by photogrammetric methods from aerial photographs taken 1966. Field checked 1967
Polyconic projection. 1927 North American datum
10,000-foot grid based on Idaho coordinate system, west zone
1000-meter Universal Transverse Mercator grid ticks, zone 11, shown in blue
Fine red dashed lines indicate selected fence lines



CONTOUR INTERVAL 20 FEET
DATUM IS MEAN SEA LEVEL

ROAD CLASSIFICATION
Medium-duty ——— Light-duty ———
Unimproved dirt - - - - -



THIS MAP COMPLIES WITH NATIONAL MAP ACCURACY STANDARDS
FOR SALE BY U. S. GEOLOGICAL SURVEY, DENVER, COLORADO 80225, OR WASHINGTON, D. C. 20242
A FOLDER DESCRIBING TOPOGRAPHIC MAPS AND SYMBOLS IS AVAILABLE ON REQUEST

KEUTERVILLE, IDAHO
N4600—W11622.5/7.5
1967
AMS 2776 III SW—SERIES V883

2170
AUG 2 1971
USGS HISTORICAL FILE
TOPOGRAPHIC DIVISION