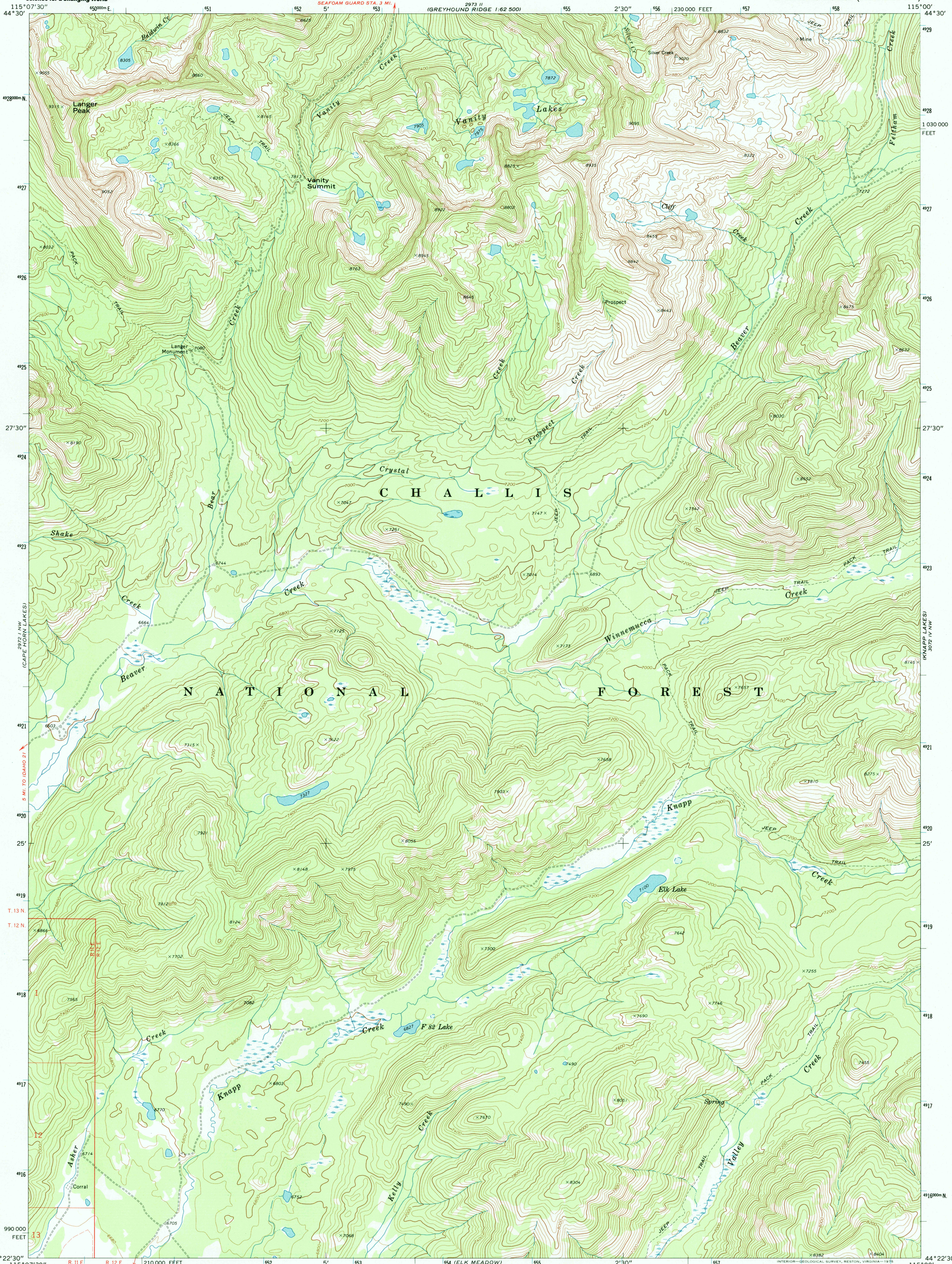




U.S. DEPARTMENT OF THE INTERIOR  
U.S. GEOLOGICAL SURVEY

LANGER PEAK QUADRANGLE  
IDAHO—CUSTER CO.  
7.5 MINUTE SERIES (TOPOGRAPHIC)



Mapped, edited, and published by the Geological Survey

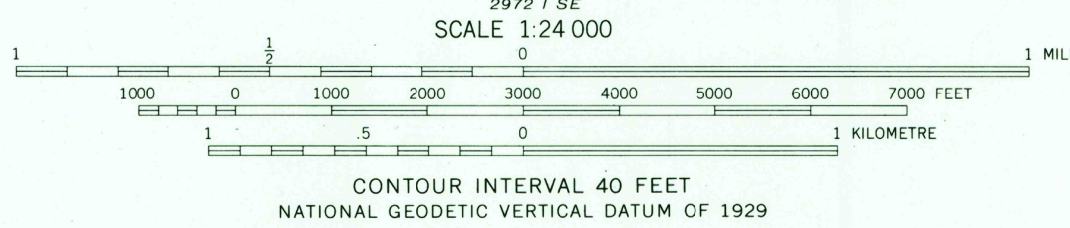
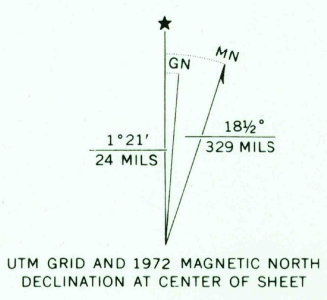
Control by USGS and NOS/NOAA

Topography by photogrammetric methods from aerial photographs taken 1971. Field checked 1972

Projection and 10,000-foot grid ticks: Idaho coordinate system, central zone (transverse Mercator)  
1000-metre Universal Transverse Mercator grid ticks, zone 11, shown in blue. 1927 North American datum

Fine red dashed lines indicate selected fence lines

Where omitted, land lines have not been established



ROAD CLASSIFICATION

- Primary highway, hard surface
- Secondary highway, hard surface
- Unimproved road
- Interstate Route
- U. S. Route
- State Route
- Light-duty road, hard or improved surface
- Jeep trail

LANGER PEAK, IDAHO  
N4422.5—W11500/7.5

1972

AMS 2972 I NE—SERIES V893

THIS MAP COMPLIES WITH NATIONAL MAP ACCURACY STANDARDS  
FOR SALE BY U.S. GEOLOGICAL SURVEY, P.O. BOX 25286, DENVER, COLORADO 80225  
A FOLDER DESCRIBING TOPOGRAPHIC MAPS AND SYMBOLS IS AVAILABLE ON REQUEST

RECEIVED  
DEC 31 1999  
USGS/AMND  
HISTORICAL MAP ARCHIVES



9 780607 174533