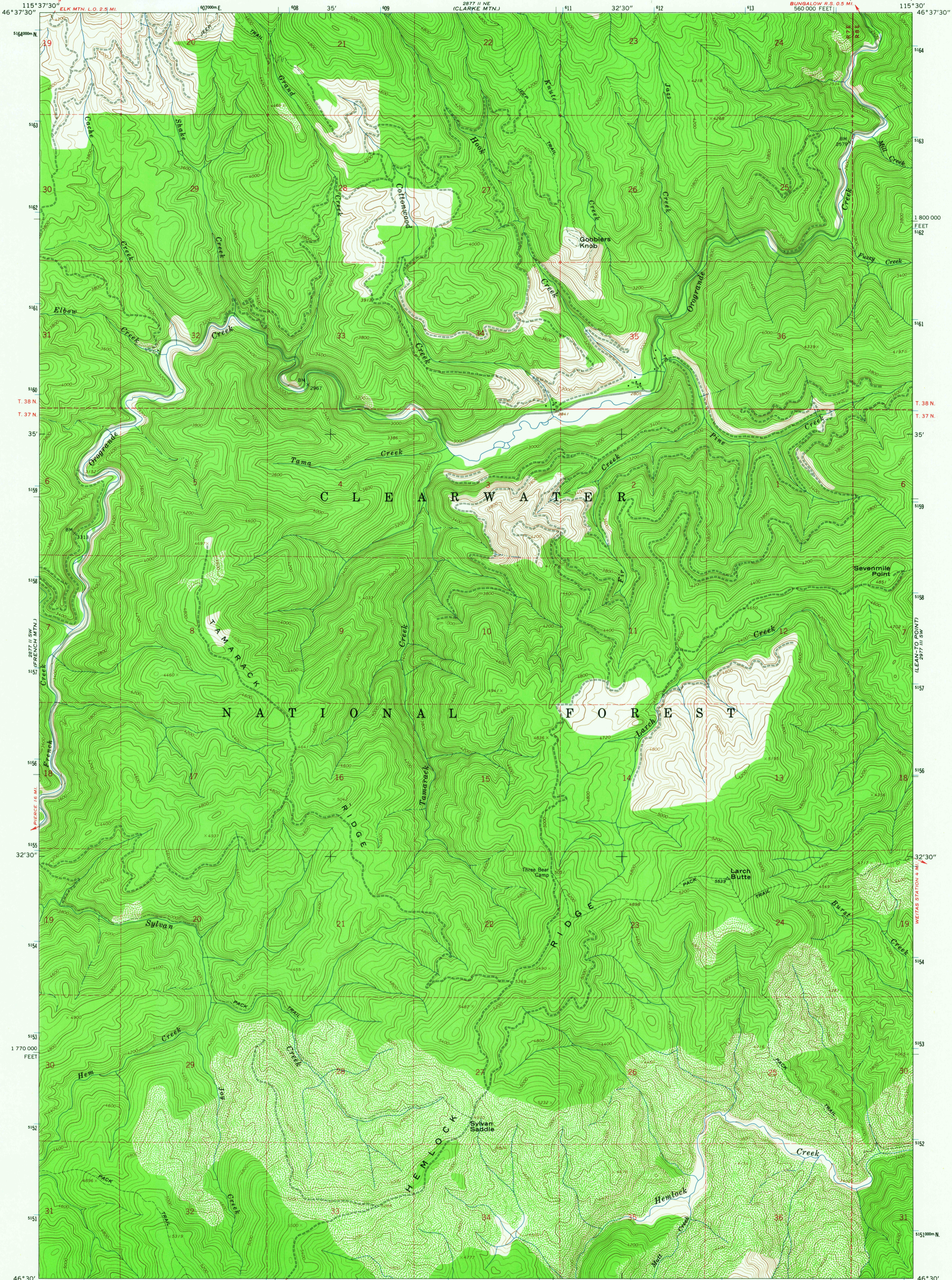
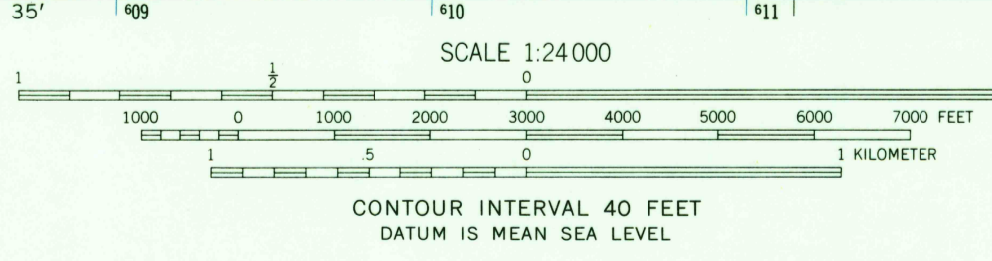
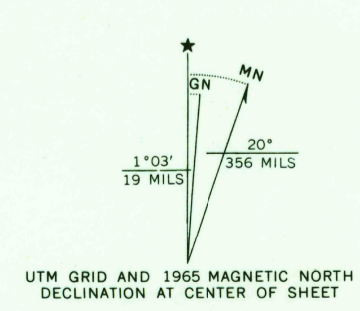


20° 14' 11" W  
(POI MOUNTAIN)



Mapped by the U. S. Forest Service  
Edited and published by the Geological Survey  
Control by USGS, USC&GS, and USFS  
Topography by photogrammetric methods from aerial  
photographs taken 1959. Field checked by USGS 1965  
Polyconic projection. 1927 North American datum  
10,000-foot grid based on Idaho coordinate system,  
west zone  
1000-meter Universal Transverse Mercator grid ticks,  
zone 11, shown in blue  
Where omitted, land lines have not been established



USGS  
Historical File  
Topographic Division

ROAD CLASSIFICATION  
Light-duty ————— Unimproved dirt - - - - -

U.S.G.S.  
QUADRANGLE LOCATION  
FILE COPY  
TOPOGRAPHIC DIVISION

LARCH BUTTE, IDAHO  
N4630—W11530/7.5

1965  
AMS 2877 II SE—SERIES V893

FOR SALE BY U. S. GEOLOGICAL SURVEY, DENVER, COLORADO 80225, OR WASHINGTON, D. C. 20242  
A FOLDER DESCRIBING TOPOGRAPHIC MAPS AND SYMBOLS IS AVAILABLE ON REQUEST

2665  
DEC 18 1967