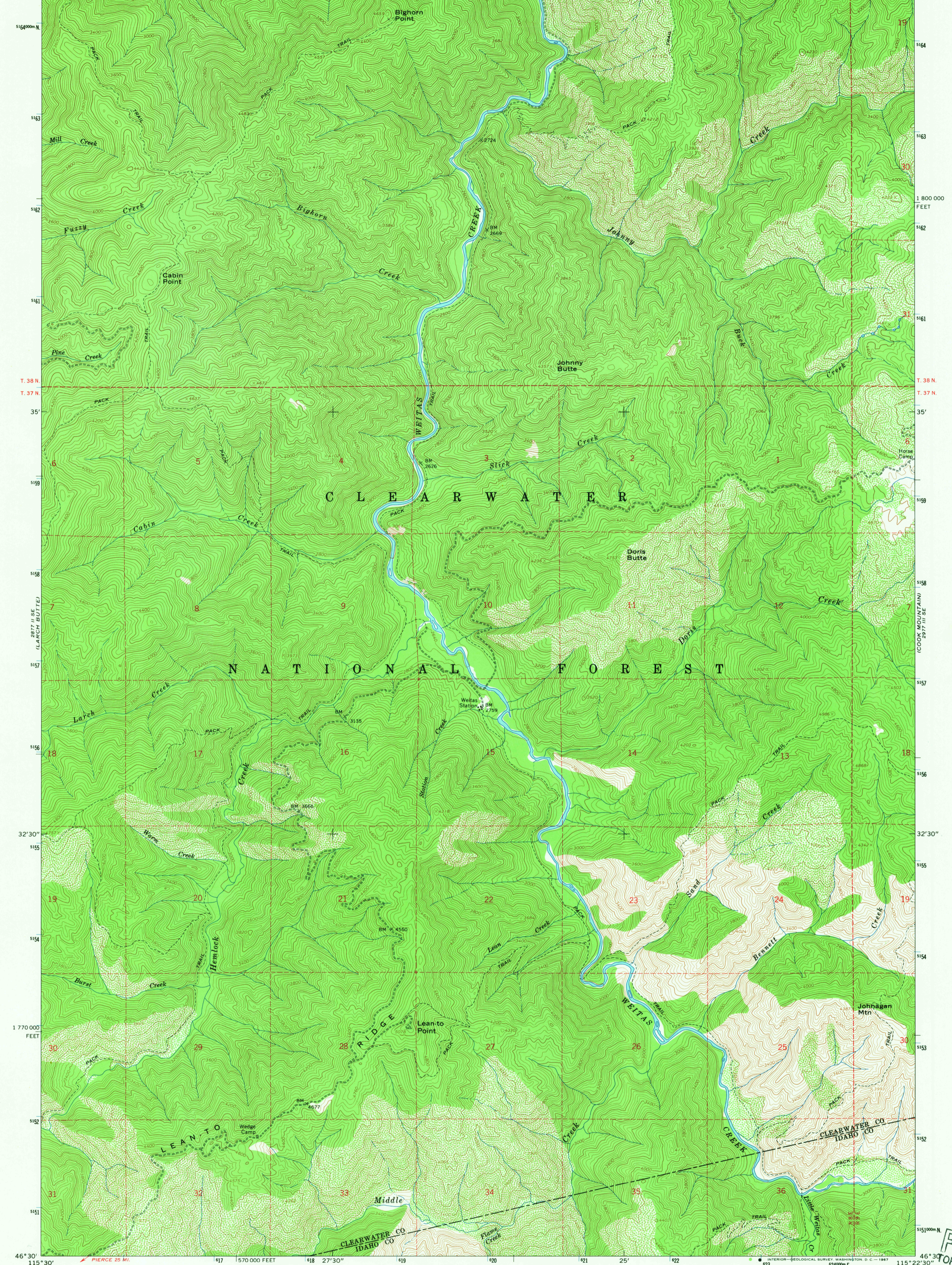
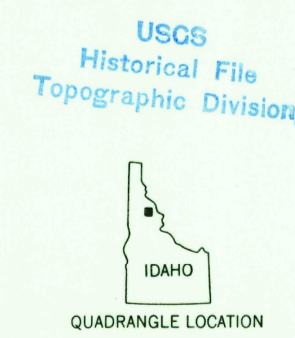
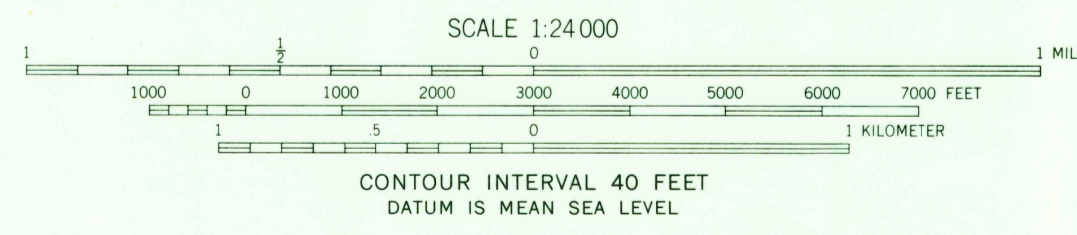
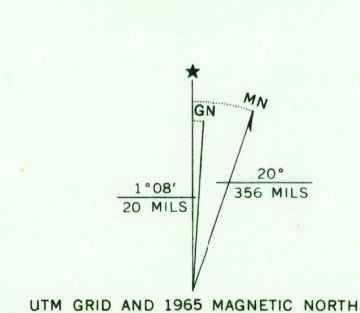


115°30' 4150000E 46°37'30" 115°22'30" 46°37'30" 27°30' 19 25' 590 000 FEET R 8 E R 9 E 124



Maped by the U. S. Forest Service
Edited and published by the Geological Survey
Control by USGS, USC&GS, and USFS
Topography by photogrammetric methods from aerial
photographs taken 1959. Field checked by USGS 1965
Polyconic projection. 1927 North American datum
10,000-foot grid based on Idaho coordinate system,
west zone
1000-meter Transverse Mercator grid ticks,
zone 11, shown in blue
Where omitted, land lines have not been established



ROAD CLASSIFICATION
Unimproved dirt -----

LEAN-TO POINT, IDAHO
N4630-W11522.5/7.5

1965

AMS 2977 III SW-SERIES V893

FOR SALE BY U. S. GEOLOGICAL SURVEY, DENVER, COLORADO 80225, OR WASHINGTON, D. C. 20242
A FOLDER DESCRIBING TOPOGRAPHIC MAPS AND SYMBOLS IS AVAILABLE ON REQUEST

U.S.G.S.
FILE COPY
TOPOGRAPHIC DIVISION

2640
JAN 8 1969