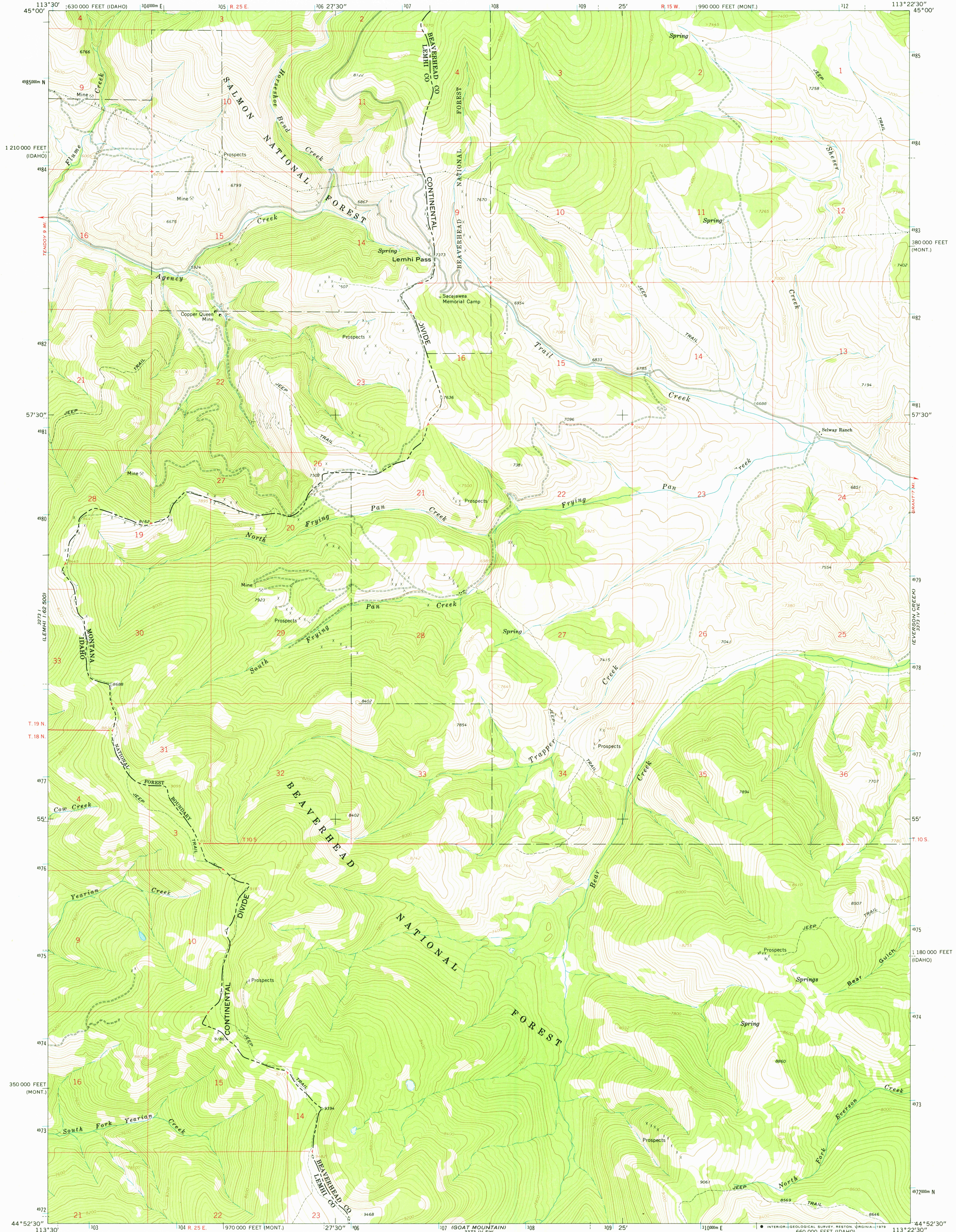
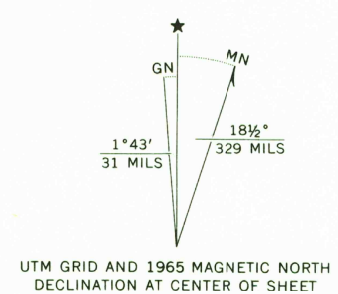


UNITED STATES  
DEPARTMENT OF THE INTERIOR  
GEOLOGICAL SURVEY

LEMHI PASS QUADRANGLE  
MONTANA-IDAHO  
7.5 MINUTE SERIES (TOPOGRAPHIC)



Mapped, edited, and published by the Geological Survey  
Control by USGS and USC&GS  
Topography by photogrammetric methods from aerial  
photographs taken 1964. Field checked 1965  
Polyconic projection. 1927 North American datum  
10,000-foot grids based on Montana coordinate system,  
south zone, and Idaho coordinate system,  
central zone  
1000-meter Universal Transverse Mercator grid ticks,  
zone 12, shown in blue  
Fine red dashed lines indicate selected fence lines  
Where omitted, land lines have not been established  
There may be private inholdings within the boundaries of  
the National or State reservations shown on this map



SCALE 1:24 000  
1 000 0 1000 2000 3000 4000 5000 6000 7000 FEET  
1 5 0 1 KILOMETER  
CONTOUR INTERVAL 40 FEET  
NATIONAL GEODETIC VERTICAL DATUM OF 1929

THIS MAP COMPLIES WITH NATIONAL MAP ACCURACY STANDARDS  
FOR SALE BY U. S. GEOLOGICAL SURVEY, DENVER, COLORADO 80225, OR RESTON, VIRGINIA 22092  
A FOLDER DESCRIBING TOPOGRAPHIC MAPS AND SYMBOLS IS AVAILABLE ON REQUEST



ROAD CLASSIFICATION  
Light-duty ————— Unimproved dirt =====  
USGS  
Historical File  
Topographic Division

LEMHI PASS, MONT.-IDAHO  
N4452.5-W11322.5/7.5

1965

DMA 3373 IV NE-SERIES V894

FEB 13 1980

1800