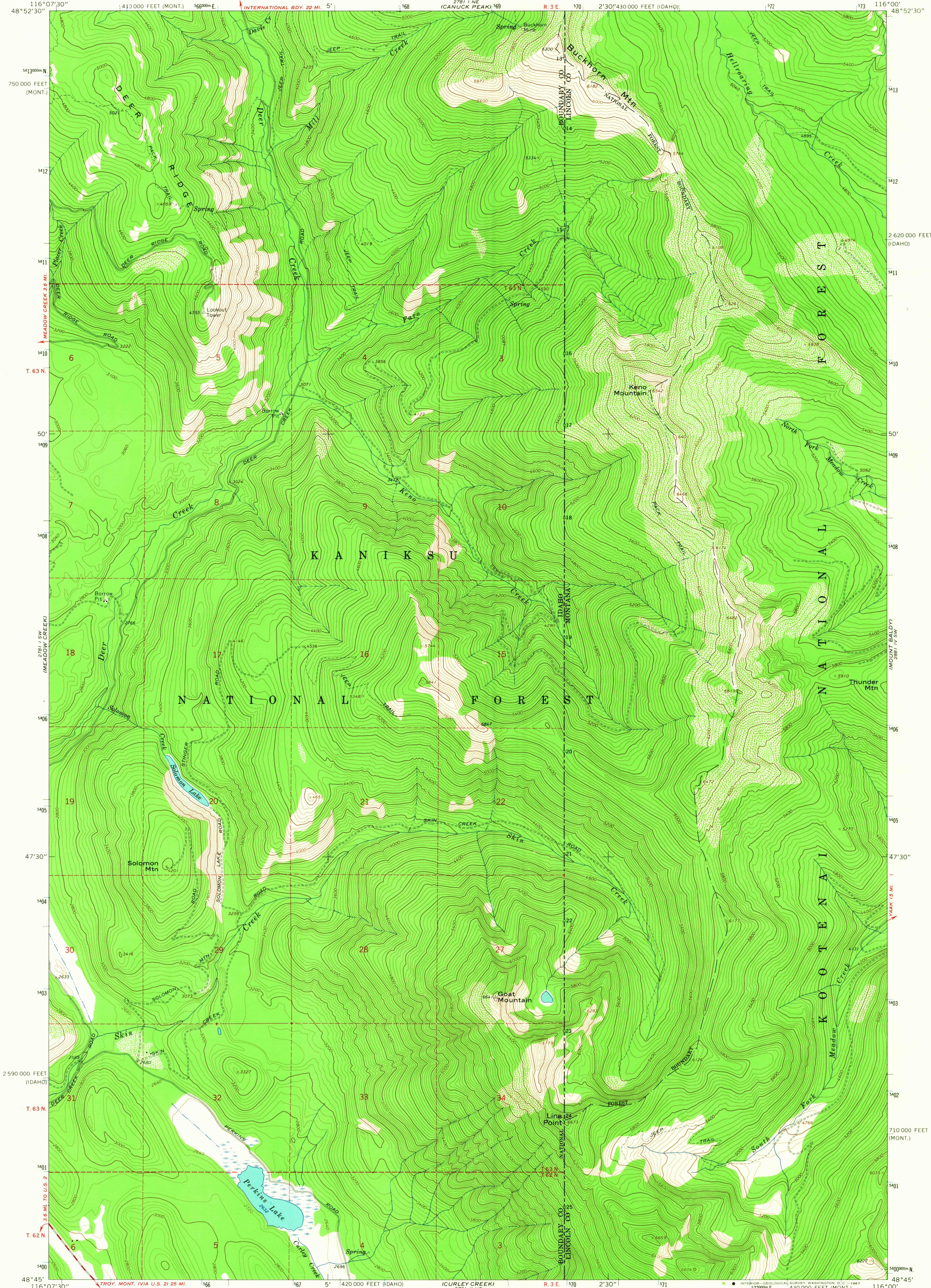


2781 1/4 NW (4341-POINT)

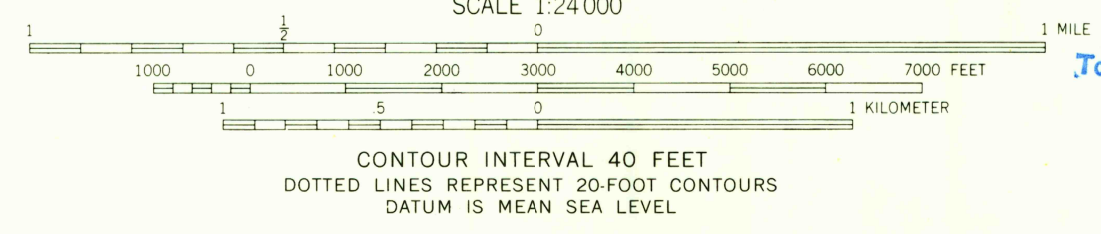
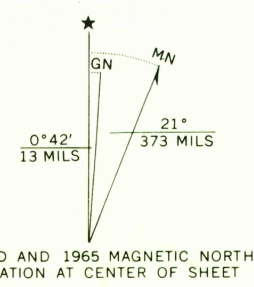
UNITED STATES  
DEPARTMENT OF THE INTERIOR  
GEOLOGICAL SURVEY

LINE POINT QUADRANGLE  
IDAHO-MONTANA  
7.5 MINUTE SERIES (TOPOGRAPHIC)

2781 1/4 NW (NORTHWEST PEAK)



Mapped, edited, and published by the Geological Survey  
Control by USGS and USC&GS  
Topography by photogrammetric methods from aerial photographs taken 1963. Field checked 1965  
Polyconic projection. 1927 North American datum 10,000-foot grids based on Idaho coordinate system, west zone, and Montana coordinate system, north zone 1000-meter Universal Transverse Mercator grid ticks, zone 11, shown in blue  
Where omitted, land lines have not been established



USGS  
Historical File  
Topographic Division



ROAD CLASSIFICATION

Medium-duty	Light-duty
Unimproved dirt	=====

THIS MAP COMPLIES WITH NATIONAL MAP ACCURACY STANDARDS  
FOR SALE BY U.S. GEOLOGICAL SURVEY, DENVER, COLORADO 80225, OR WASHINGTON, D.C. 20242  
A FOLDER DESCRIBING TOPOGRAPHIC MAPS AND SYMBOLS IS AVAILABLE ON REQUEST

U.S.G.S.  
FILE COPY  
TOPOGRAPHIC DIVISION

LINE POINT, IDAHO-MONT.  
N4845-W11600/7.5  
1965  
AMS 2781 1 SE-SERIES V893

2690  
AUG 7 1967