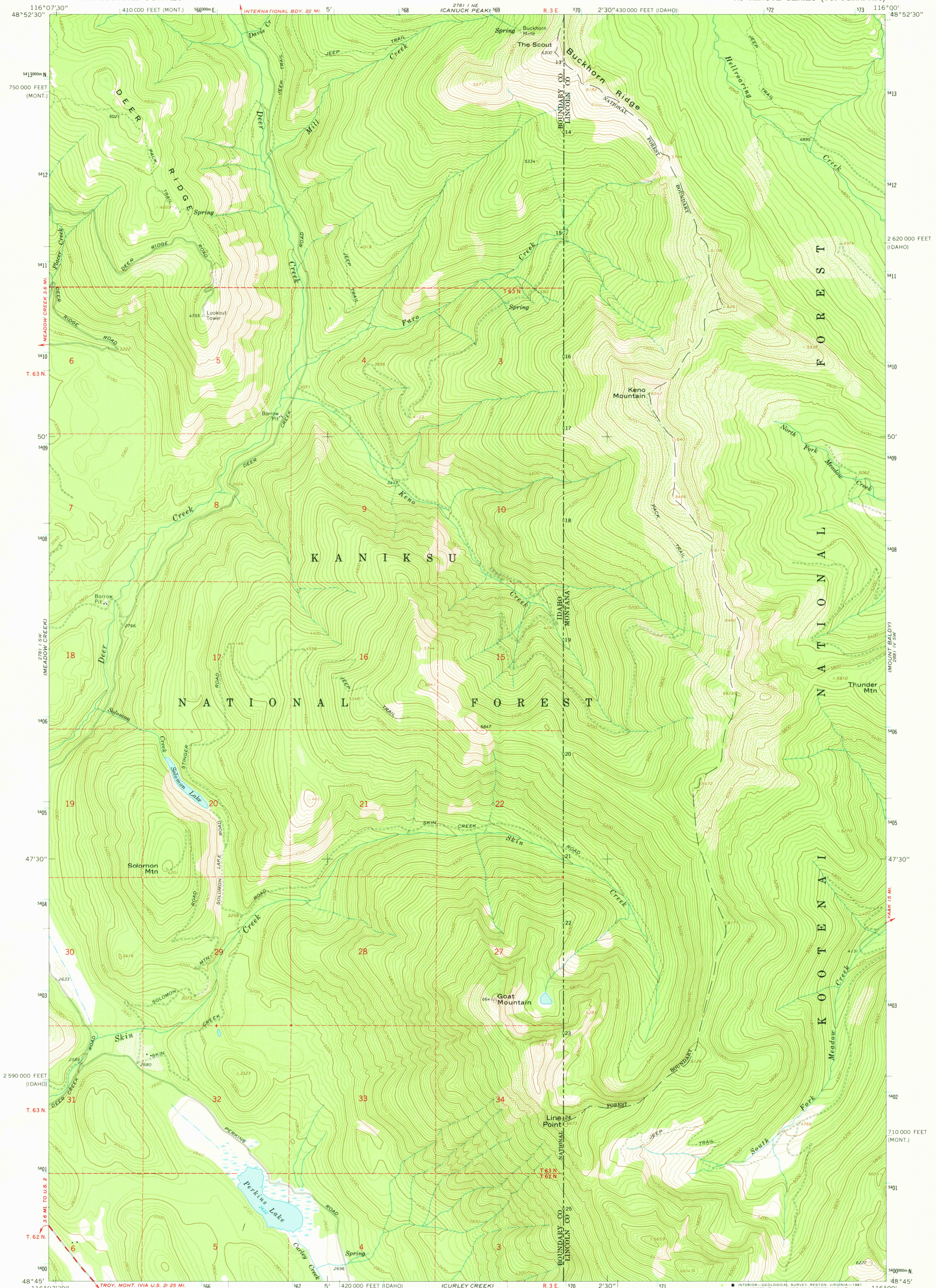


2881 1/4 NE
EAST-FORTH

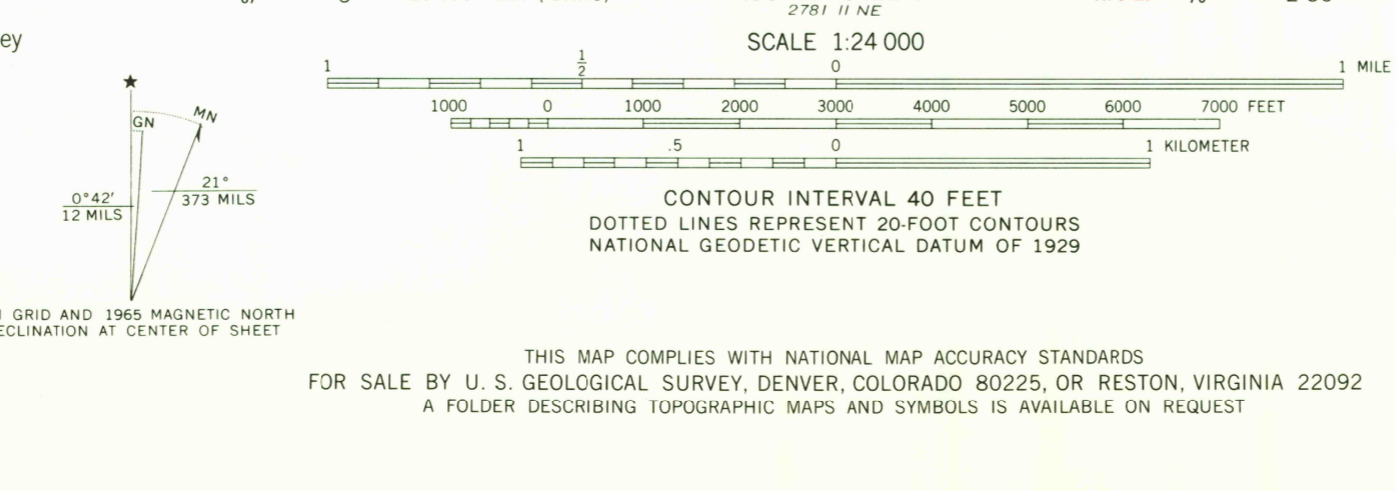
UNITED STATES
DEPARTMENT OF THE INTERIOR
GEOLOGICAL SURVEY

LINE POINT QUADRANGLE
IDAHO-MONTANA
7.5 MINUTE SERIES (TOPOGRAPHIC)

2881 1/4 NE
NORTHWEST PEAK



Mapped, edited, and published by the Geological Survey
Control by USGS and USC&GS
Topography by photogrammetric methods from aerial photographs taken 1963. Field checked 1965
Polyconic projection. 1927 North American datum 10,000-foot grids based on Idaho coordinate system, west zone, and Montana coordinate system, north zone 1000-meter Universal Transverse Mercator grid ticks, zone 11, shown in blue
To place on the predicted North American Datum 1983, move the projection lines 12 meters north and 76 meters east as shown by dashed corner ticks
Where omitted, land lines have not been established
There may be private inholdings within the boundaries of the National or State reservations shown on this map



ROAD CLASSIFICATION
Medium-duty ——— Light-duty ———
Unimproved dirt ———

LINE POINT, IDAHO-MONT.
N4845-W11600/7.5
1965
DMA 2781 1 SE-SERIES V893

130
OCT 26 1981