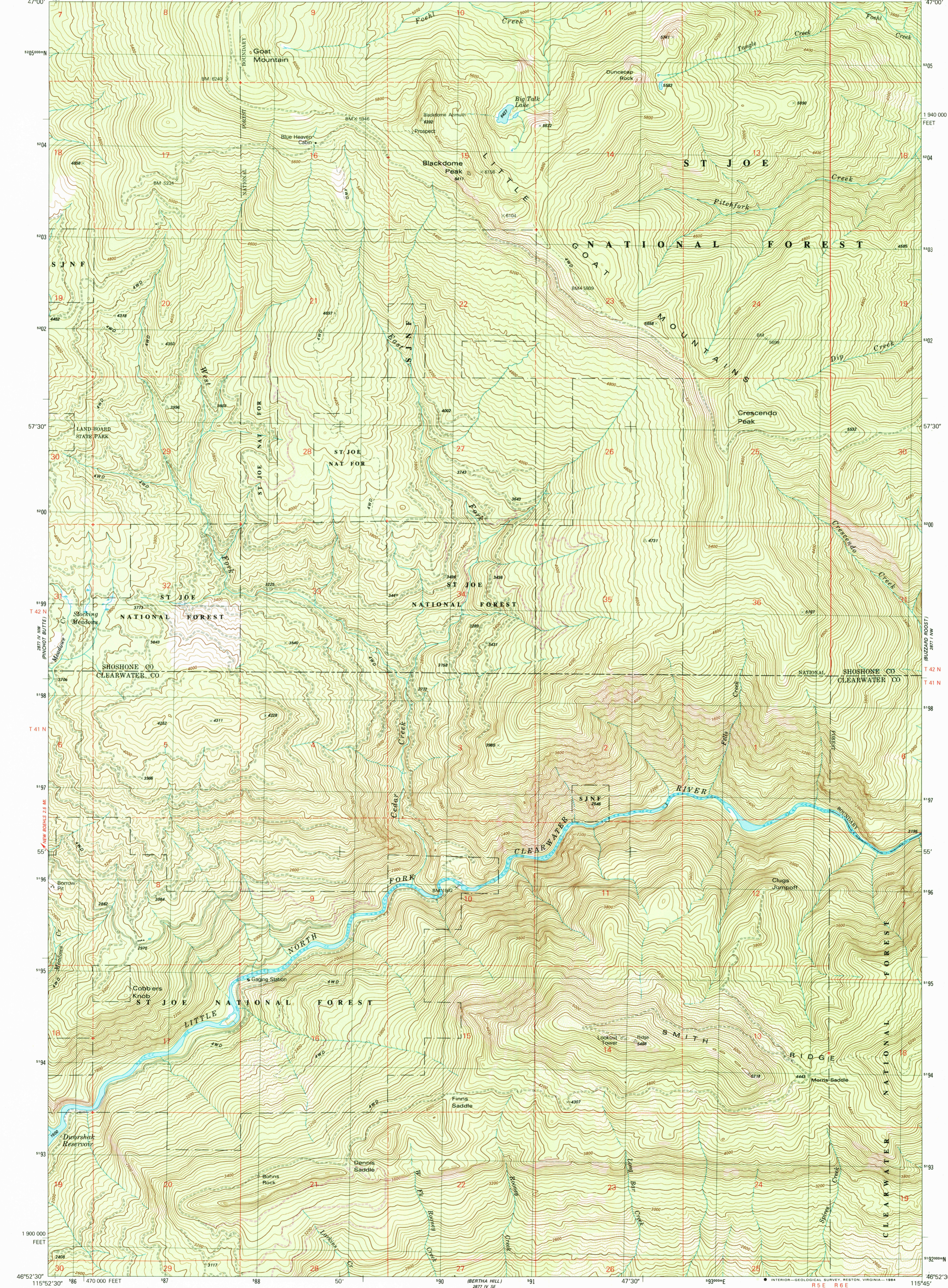


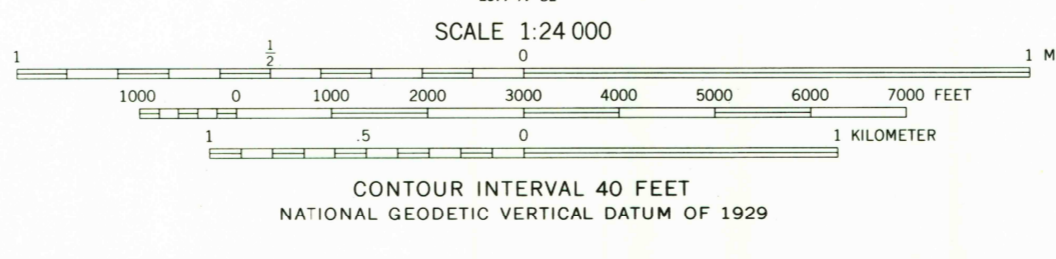
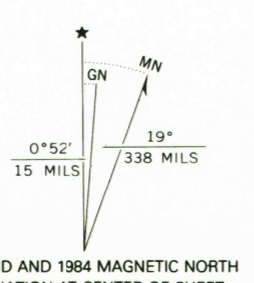
115°52'30"
47°00'



1900 000
FEET

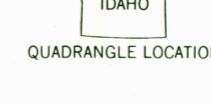
46°52'30"
115°52'30"

Mapped, edited, and published by the Geological Survey
Control by USGS and NOS/NOAA
Topography by photogrammetric methods from aerial
photographs taken 1974. Field checked 1975
Map edited 1981
Projection and 10,000-foot grid ticks: Idaho coordinate
system, west zone (transverse Mercator)
1000-meter Universal Transverse Mercator grid, zone 11
1927 North American Datum
To place on the predicted North American Datum 1983
move the projection lines 14 meters north and
75 meters east as shown by dashed corner ticks
There may be private inholdings within the boundaries of
the National or State reservations shown on this map



ROAD CLASSIFICATION

Primary highway, hard surface	Light-duty road, hard or improved surface
Secondary highway, hard surface	Unimproved road
Interstate Route	U. S. Route
	State Route



LITTLE GOAT MOUNTAINS, IDAHO
NE/4 BOEHL'S BUTTE 15' QUADRANGLE
N4652.5-W11545.7/5

FOR SALE BY U. S. GEOLOGICAL SURVEY, DENVER, COLORADO 80225, OR RESTON, VIRGINIA 22092
A FOLDER DESCRIBING TOPOGRAPHIC MAPS AND SYMBOLS IS AVAILABLE ON REQUEST

Revisions shown in purple and woodland compiled from
aerial photographs taken 1982 and other sources
Partial field check by U.S. Forest Service. Map edited 1984
1981
PHOTOREVISED 1984
DMA 2877 IV NE-SERIES V893