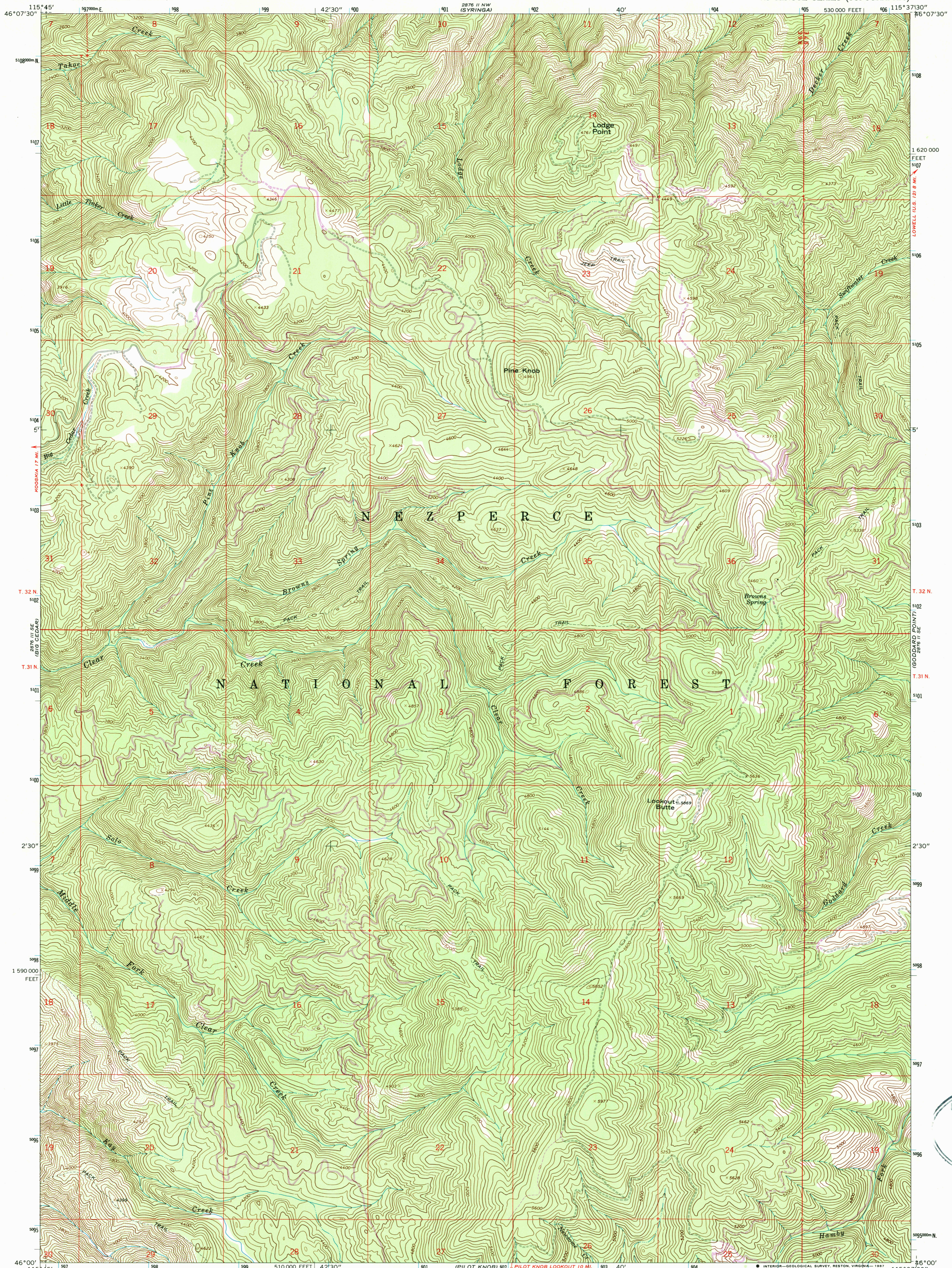


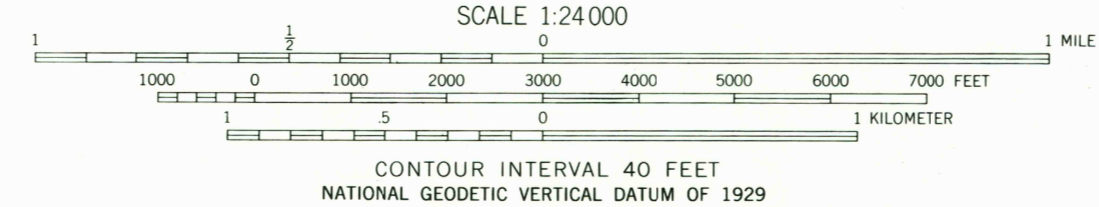
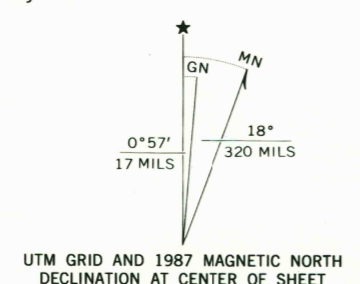
2874 W NE  
GREENWOOD

2876 E NE  
LOWELL



Mapped, edited, and published by the Geological Survey  
Control by USGS and NOS/NOAA

Topography by photogrammetric methods from aerial photographs taken 1963. Field checked 1966  
Polyconic projection. 1927 North American Datum, 10,000-foot grid based on Idaho coordinate system, west zone  
1000-meter Universal Transverse Mercator grid ticks, zone 11, shown in blue  
To place on the predicted North American Datum 1983 move the projection lines 15 meters north and 75 meters east as shown by dashed corner ticks  
There may be private inholdings within the boundaries of the National or State reservations shown on this map



CONTOUR INTERVAL 40 FEET  
NATIONAL GEODETIC VERTICAL DATUM OF 1929

THIS MAP COMPLIES WITH NATIONAL MAP ACCURACY STANDARDS  
FOR SALE BY U. S. GEOLOGICAL SURVEY  
DENVER, COLORADO 80225, OR RESTON, VIRGINIA 22092  
A FOLDER DESCRIBING TOPOGRAPHIC MAPS AND SYMBOLS IS AVAILABLE ON REQUEST

ROAD CLASSIFICATION  
Light-duty ——— Unimproved dirt - - - - -



LODGE POINT, IDAHO  
46115-A6-TF-024

Revisions shown in purple and woodland compiled from aerial photographs taken 1982 and other source data.  
Partial field check by U. S. Forest Service. Map edited 1987

1966  
PHOTOREVISED 1987  
DMA 2876 II SW—SERIES V893

