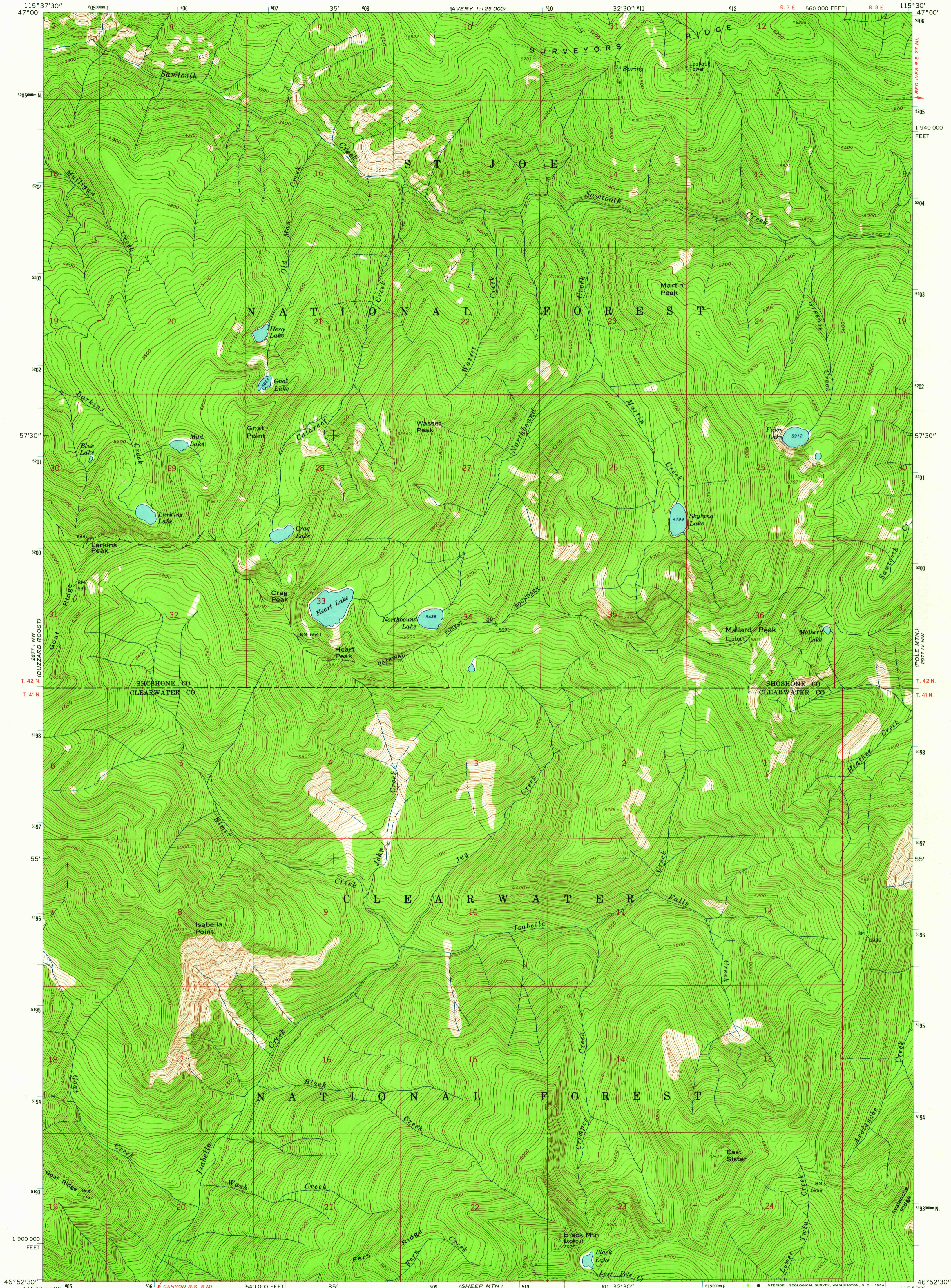
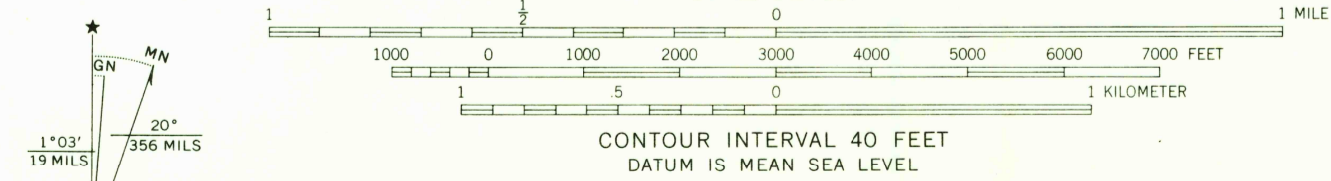


2878 III
1005
102 800



Mapped by the U. S. Forest Service
Edited and published by the Geological Survey
Control by USGS, USC&GS, and U. S. Forest Service
Topography by photogrammetric methods from aerial photographs
taken 1954, 1956, and 1959. Field checked by USGS 1963
Polyconic projection. 1927 North American datum
10,000-foot grid based on Idaho coordinate system,
west zone
1000-meter Universal Transverse Mercator grid ticks,
zone 11, shown in blue
Where omitted, land lines have not been established



USGS
Historical File
Topographic Division

ROAD CLASSIFICATION
Unimproved dirt -----



MALLARD PEAK, IDAHO
N4652.5-W11530/7.5

FOR SALE BY U. S. GEOLOGICAL SURVEY, DENVER 25, COLORADO OR WASHINGTON 25, D. C.
A FOLDER DESCRIBING TOPOGRAPHIC MAPS AND SYMBOLS IS AVAILABLE ON REQUEST

1963
AMS 2877 I NE-SERIES V893

SEP 2 1964

2590

U.S.G.S.
LE COPY
TOPOGRAPHIC DIVISION