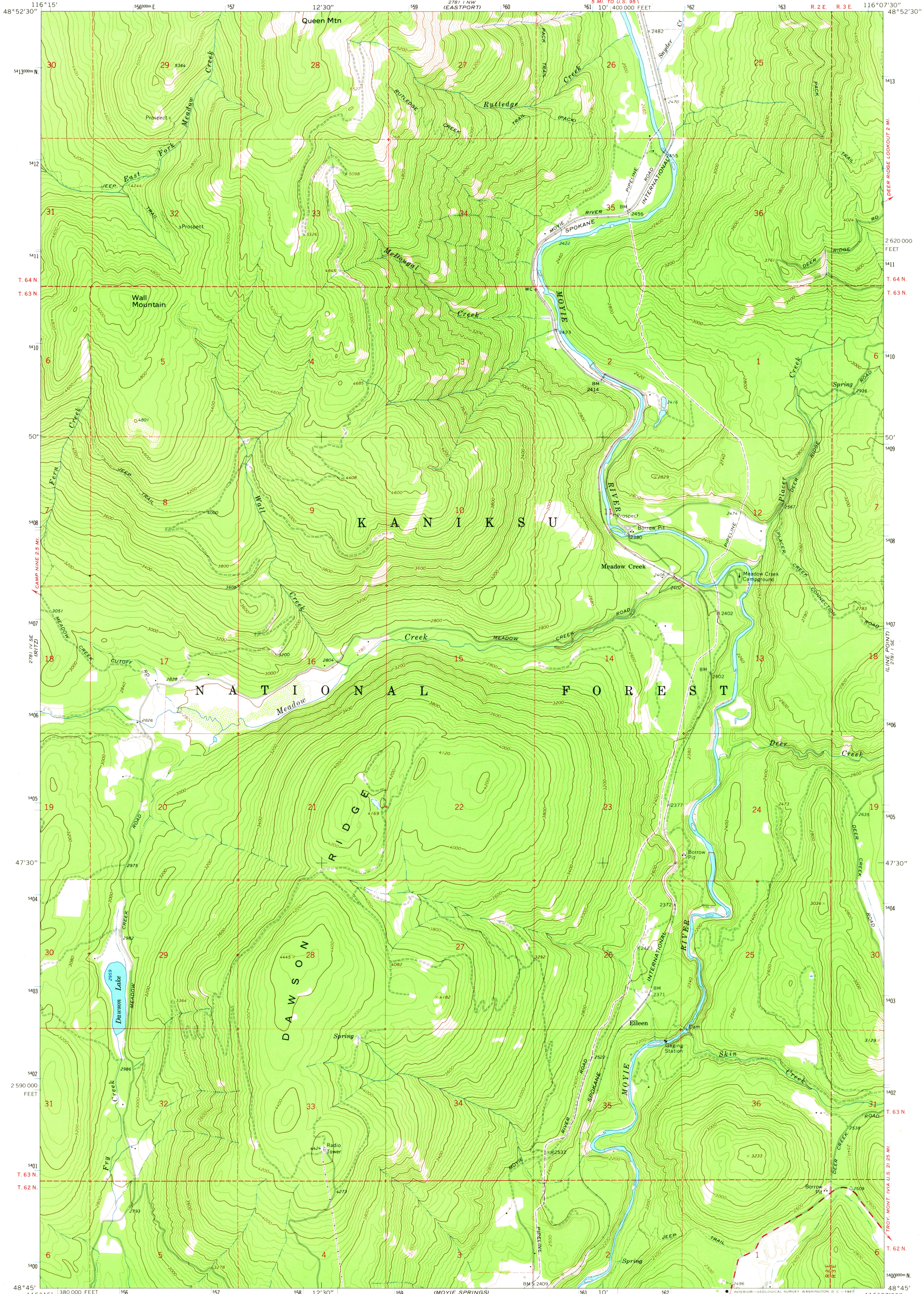


2781 N/NE
2781 NW
2781 NE
2781 SE
2781 W/SE
2781 W/NE
2781 W/W

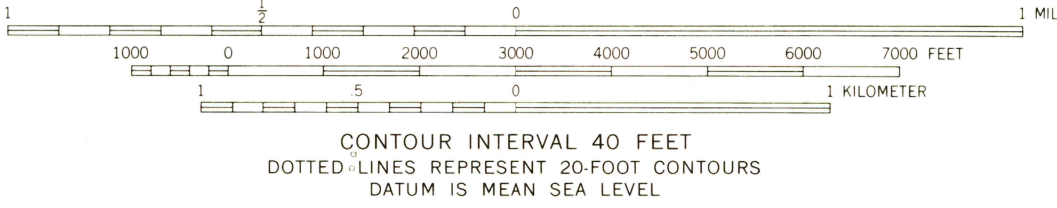
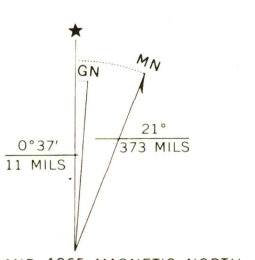
UNITED STATES
DEPARTMENT OF THE INTERIOR
GEOLOGICAL SURVEY

MEADOW CREEK QUADRANGLE
IDAHO-BOUNDARY CO.
7.5 MINUTE SERIES (TOPOGRAPHIC)

2781 N/NE
2781 NW
2781 NE
2781 SE
2781 W/SE
2781 W/NE
2781 W/W



Mapped, edited, and published by the Geological Survey
Control by USGS, USC&GS, and U.S. Forest Service
Topography by photogrammetric methods from aerial
photographs taken 1963. Field checked 1965
Polyconic projection. 1927 North American datum
10,000-foot grid based on Idaho coordinate system,
west zone
1000-meter Universal Transverse Mercator grid ticks,
zone 11, shown in blue
Fine red dashed lines indicate selected fence lines
Where omitted, land lines have not been established



U.S.G.S. MEADOW CREEK, IDAHO
N4845-W11607.5/7.5

FILE COPY
TOPOGRAPHIC DIVISION

1965
2781 SW-SERIES V893

THIS MAP COMPLIES WITH NATIONAL MAP ACCURACY STANDARDS
FOR SALE BY U.S. GEOLOGICAL SURVEY, DENVER, COLORADO 80225, OR WASHINGTON, D.C. 20242
A FOLDER DESCRIBING TOPOGRAPHIC MAPS AND SYMBOLS IS AVAILABLE ON REQUEST

2755
AUG 7 1967