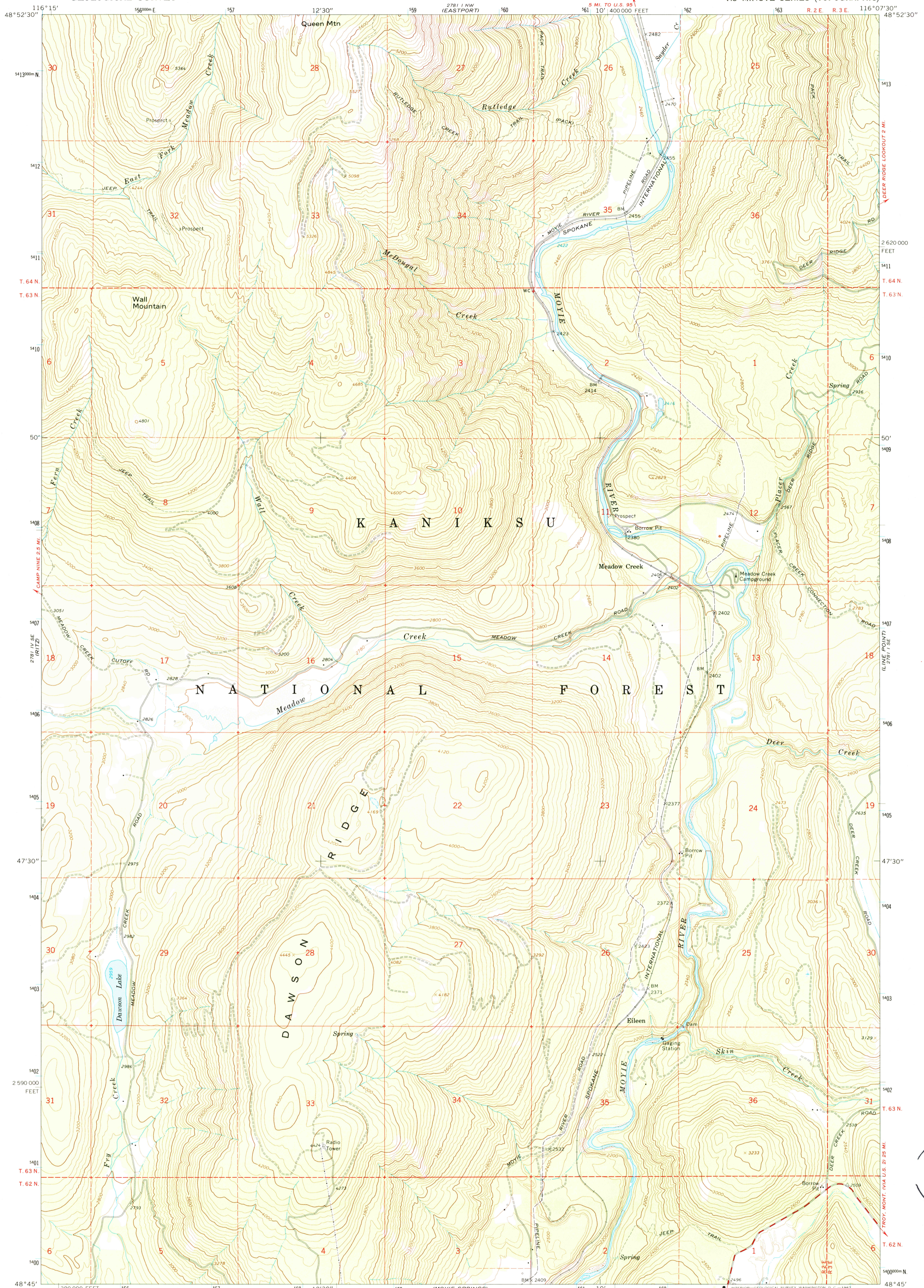


2781 IV NE
2781 I NE
2781 I NE
2781 I NE

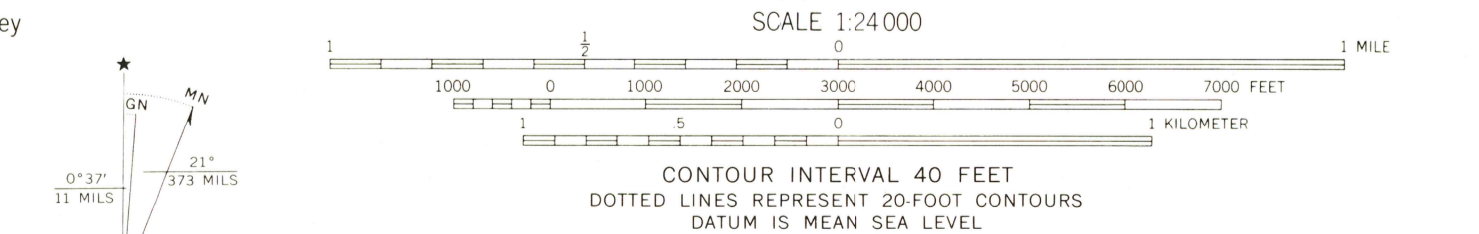
UNITED STATES
DEPARTMENT OF THE INTERIOR
GEOLOGICAL SURVEY

MEADOW CREEK QUADRANGLE
IDAHO—BOUNDARY CO.
7.5 MINUTE SERIES (TOPOGRAPHIC)

2781 I NE
2781 I NE
2781 I NE
2781 I NE



Maped, edited, and published by the Geological Survey
Control by USGS, USC&GS, and U.S. Forest Service
Topography by photogrammetric methods from aerial
photographs taken 1963. Field checked 1965
Polyconic projection. 1927 North American datum
10,000-foot grid based on Idaho coordinate system,
west zone
1000-meter Universal Transverse Mercator grid ticks,
zone 11, shown in blue
Fine red dashed lines indicate selected fence lines
Where omitted, land lines have not been established



USGS NMD HISTORICAL MAP
FEB 03 1989
REC'D FILE COPY

THIS MAP COMPLIES WITH NATIONAL MAP ACCURACY STANDARDS
FOR SALE BY U. S. GEOLOGICAL SURVEY, DENVER, COLORADO 80226 OR RESTON, VIRGINIA 22092
A FOLDER DESCRIBING TOPOGRAPHIC MAPS AND SYMBOLS IS AVAILABLE ON REQUEST

MEADOW CREEK, IDAHO
N4845—W11607.5/7.5
1965

AMS 2781 I SW—SERIES V893