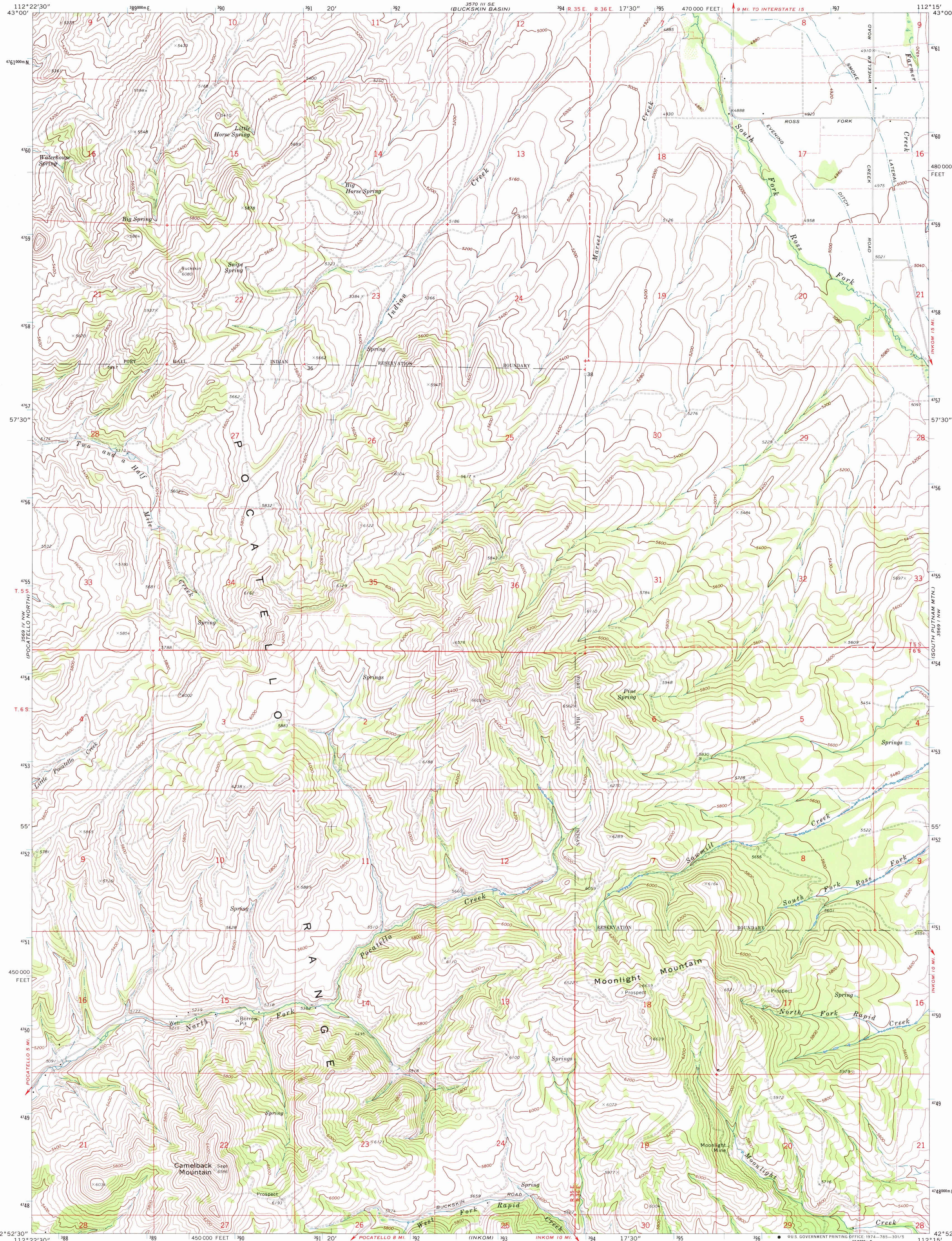


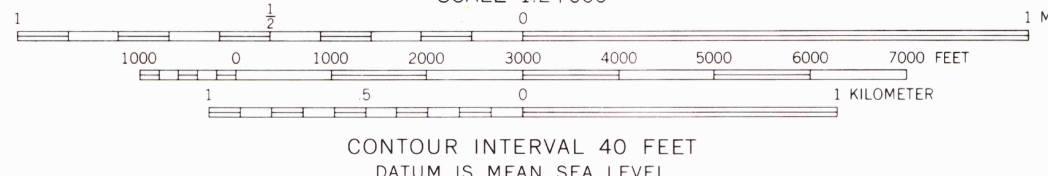
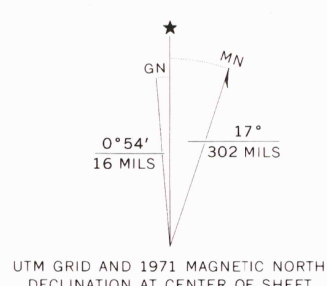
UNITED STATES
DEPARTMENT OF THE INTERIOR
GEOLOGICAL SURVEY

MOONLIGHT MTN. QUADRANGLE
IDAHO—BANNOCK CO.
7.5 MINUTE SERIES (TOPOGRAPHIC)
NE/4 POCATELLO 15' QUADRANGLE

(VANDEL SPRINGS)
3569 IV SE
3569 IV SW



Mapped, edited, and published by the Geological Survey
Control by USGS and USC&GS
Topography by photogrammetric methods from aerial
photographs taken 1969. Field checked 1971
Projection and 10,000-foot grid ticks: Idaho coordinate
system, east zone (transverse Mercator)
1000-meter Universal Transverse Mercator grid ticks,
zone 12, shown in blue. 1927 North American datum
Fine red dashed lines indicate selected fence lines



ROAD CLASSIFICATION
Primary highway, hard surface
Secondary highway, hard surface
Unimproved road
Interstate Route
U.S. Route
State Route

USGS
Historical File
Topographic Division

MOONLIGHT MTN., IDAHO
NE/4 POCATELLO 15' QUADRANGLE
N4252.5-W11215/7.5

1971

AMS 3569 IV NE—SERIES V893

THIS MAP COMPLIES WITH NATIONAL MAP ACCURACY STANDARDS
FOR SALE BY U.S. GEOLOGICAL SURVEY, DENVER, COLORADO 80225, OR WASHINGTON, D.C. 20242
A FOLDER DESCRIBING TOPOGRAPHIC MAPS AND SYMBOLS IS AVAILABLE ON REQUEST

(BONNEVILLE PEAK)
3569 IV SE
3569 IV SW

2500
50 plane

Dugan

JUL 2 8 1974