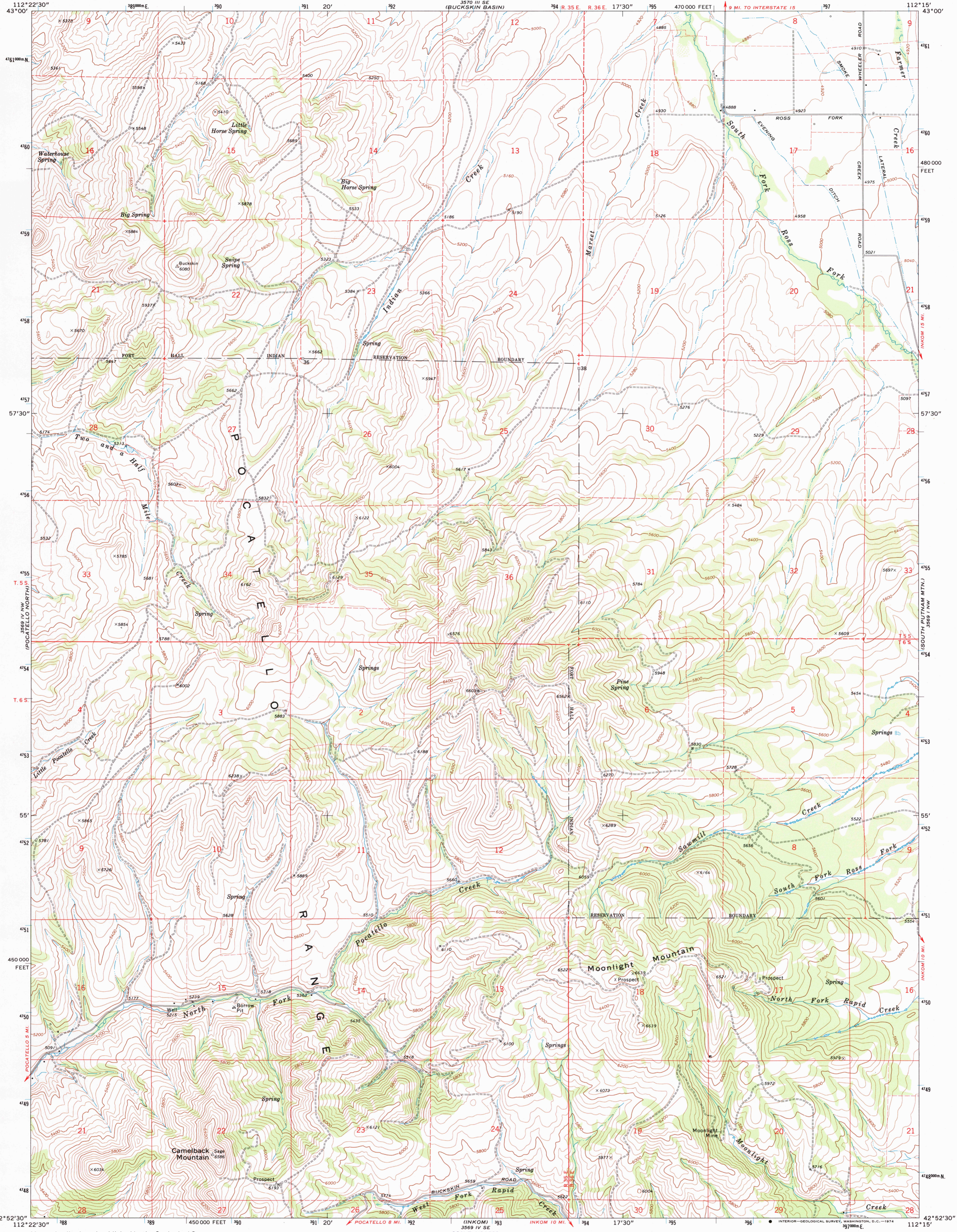
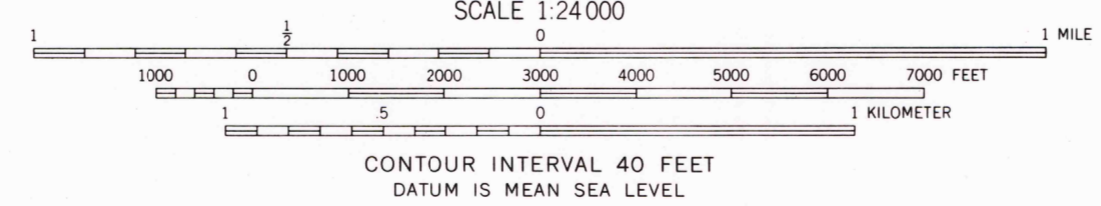
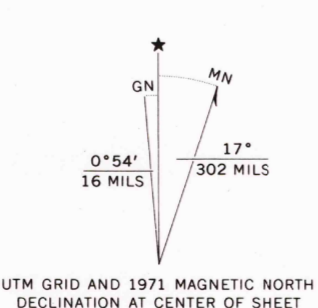


UNITED STATES
DEPARTMENT OF THE INTERIOR
GEOLOGICAL SURVEY

MOONLIGHT MTN. QUADRANGLE
IDAHO—BANNOCK CO.
7.5 MINUTE SERIES (TOPOGRAPHIC)
NE 1/4 POCATELLO 15' QUADRANGLE



Mapped, edited, and published by the Geological Survey
Control by USGS and USC&GS
Topography by photogrammetric methods from aerial photographs taken 1969. Field checked 1971
Projection and 10,000-foot grid ticks: Idaho coordinate system, east zone (transverse Mercator)
1000-meter Universal Transverse Mercator grid ticks, zone 12, shown in blue. 1927 North American datum
Fine red dashed lines indicate selected fence lines



ROAD CLASSIFICATION
Primary highway, hard surface
Secondary highway, hard surface
Interstate Route
U. S. Route
State Route
Light-duty road, hard or improved surface
Unimproved road
U. S. Route
State Route

MOONLIGHT MTN., IDAHO
NE 1/4 POCATELLO 15' QUADRANGLE
N4252.5—W11215.7.5
1971
AMS 3569 IV NE—SERIES V883

THIS MAP COMPLIES WITH NATIONAL MAP ACCURACY STANDARDS
FOR SALE BY U.S. GEOLOGICAL SURVEY
DENVER, COLORADO 80225, OR RESTON, VIRGINIA 22092
A FOLDER DESCRIBING TOPOGRAPHIC MAPS AND SYMBOLS IS AVAILABLE ON REQUEST

USGS AND HISTORICAL MAP ARCHIVES
SEP 22 1994
REC'D FILE COPY