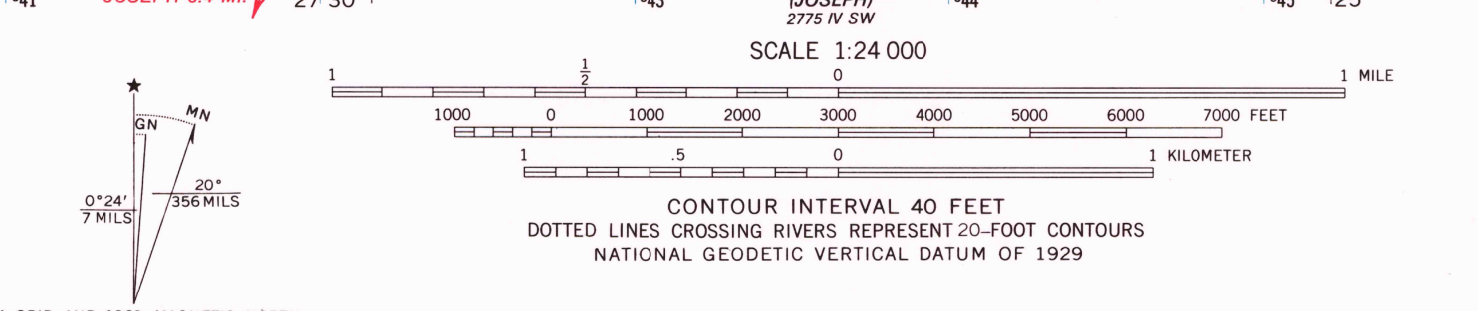


Mapped, edited, and published by the Geological Survey
Control by USGS and USC&GS
Topography by photogrammetric methods from aerial
photographs taken 1961. Field checked 1963
Polyconic projection. 1927 North American datum
10,000-foot grid based on Idaho coordinate system, west zone
1000-meter Universal Transverse Mercator grid ticks,
zone 11, shown in blue
Fine red dashed lines indicate selected fence lines



ROAD CLASSIFICATION
Light-duty ————— Unimproved dirt - - - - -
USGS
Historical File
Topographic Division
IDAHO
QUADRANGLE LOCATION