

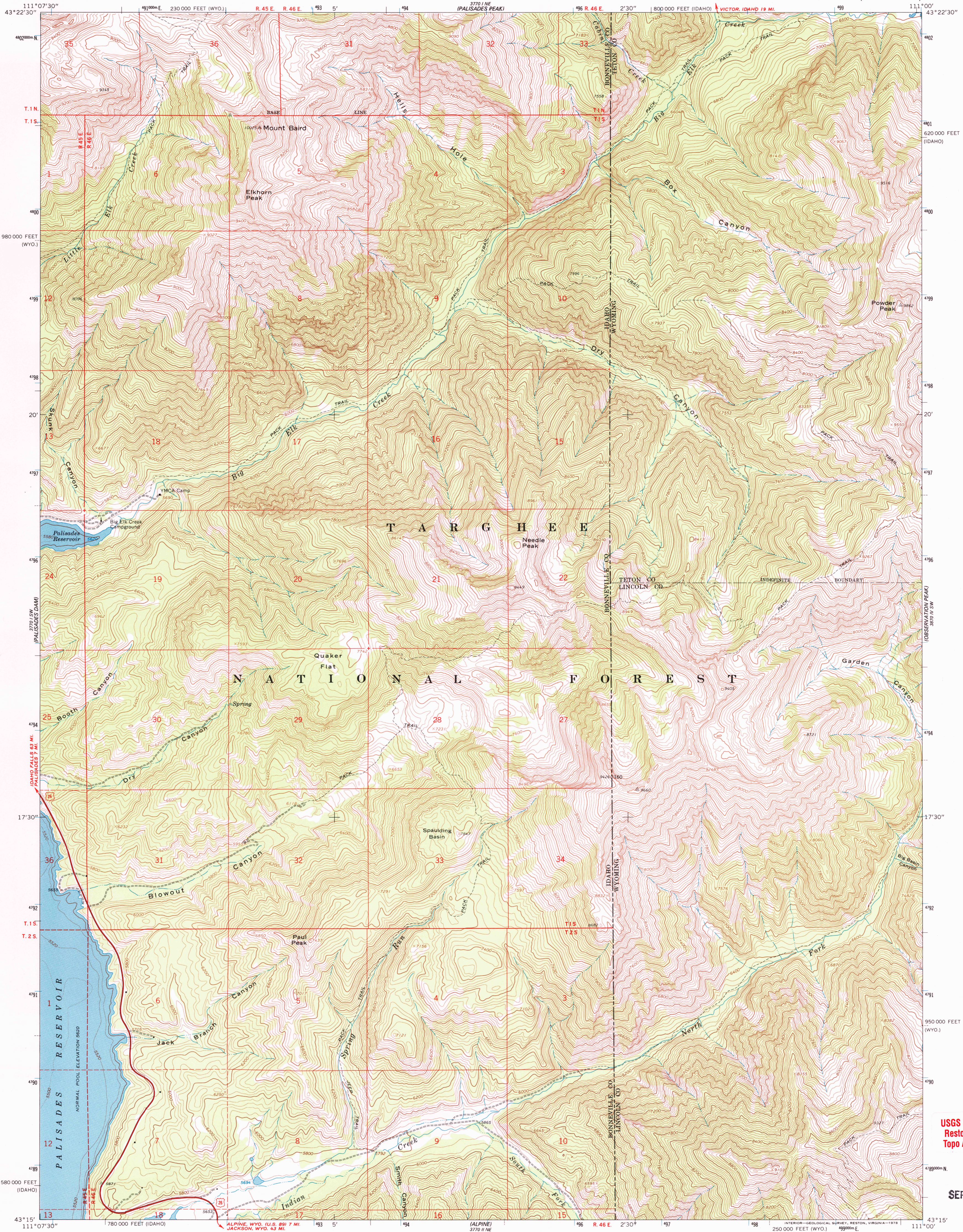
3770 1 NE (PALISADES DAM)



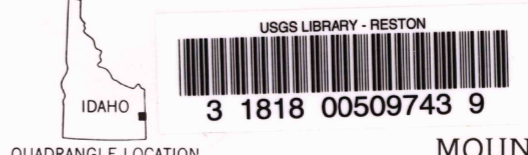
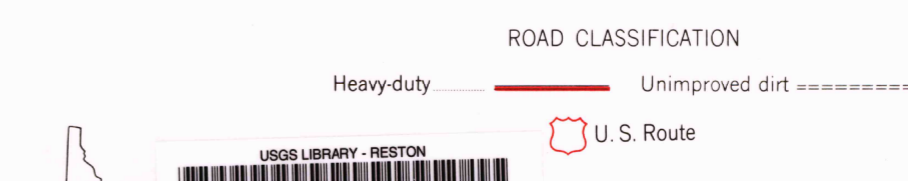
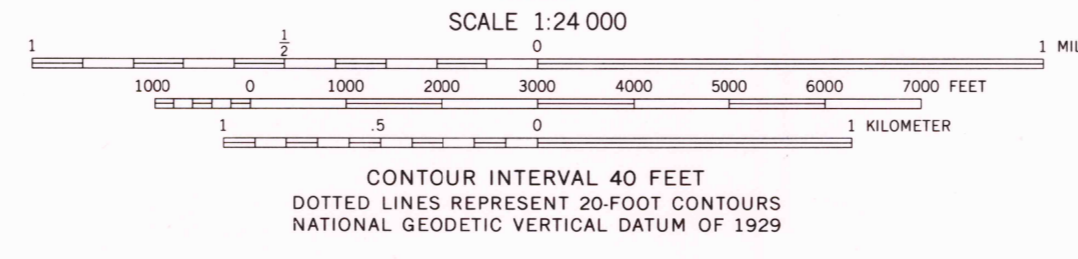
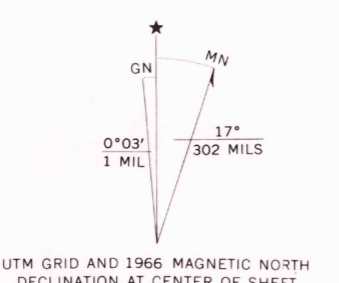
U.S. DEPARTMENT OF THE INTERIOR  
U.S. GEOLOGICAL SURVEY

MOUNT BAIRD QUADRANGLE  
IDAHO-WYOMING  
7.5 MINUTE SERIES (TOPOGRAPHIC)

3770 1 NW (TETON PASS)



Mapped, edited, and published by the Geological Survey  
Control by USGS and USC&GS  
Topography by photogrammetric methods from aerial photographs taken 1965. Field checked 1966  
Underwater contours by U. S. Bureau of Reclamation  
Polyconic projection. 1927 North American datum  
10,000-foot grids based on Idaho coordinate system, east zone, and Wyoming coordinate system, west zone  
1000-meter Universal Transverse Mercator grid ticks, zone 12, shown in blue  
Where omitted, land lines have not been established



QUADRANGLE LOCATION  
MOUNT BAIRD, IDAHO-WYO.  
N4315-W11100/7.5  
1966  
AMS 3770 1 SE-SERIES V893

THIS MAP COMPLIES WITH NATIONAL MAP ACCURACY STANDARDS  
FOR SALE BY U. S. GEOLOGICAL SURVEY, DENVER, COLORADO 80225, OR RESTON, VIRGINIA 22092  
A FOLDER DESCRIBING TOPOGRAPHIC MAPS AND SYMBOLS IS AVAILABLE ON REQUEST

USGS Library  
Reston, VA.  
Topo Archive

SEP 19 2006

ISBN 0-507-27603-4  
9 780607 117601