

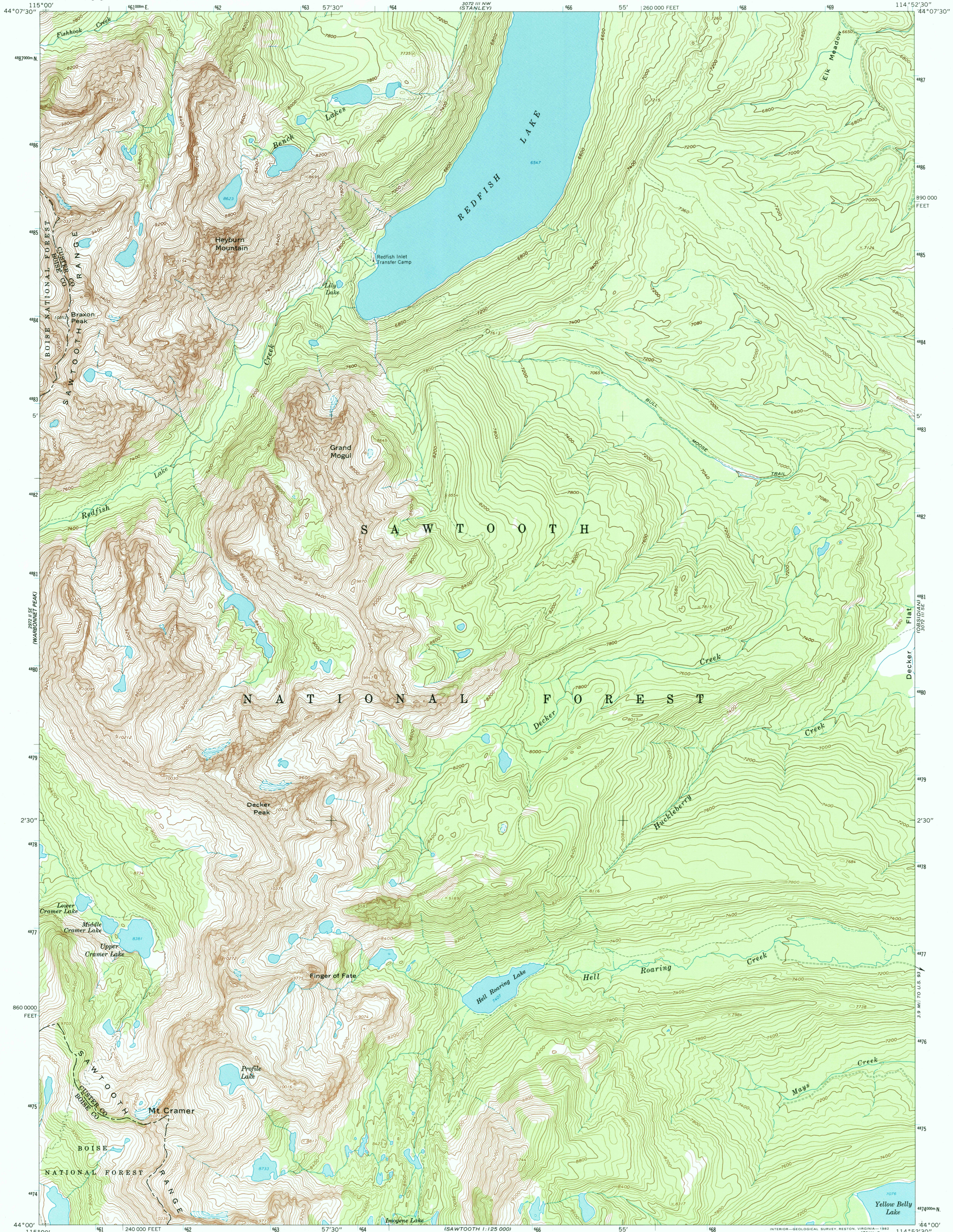
3072 III NW (STANLEY LAKE)



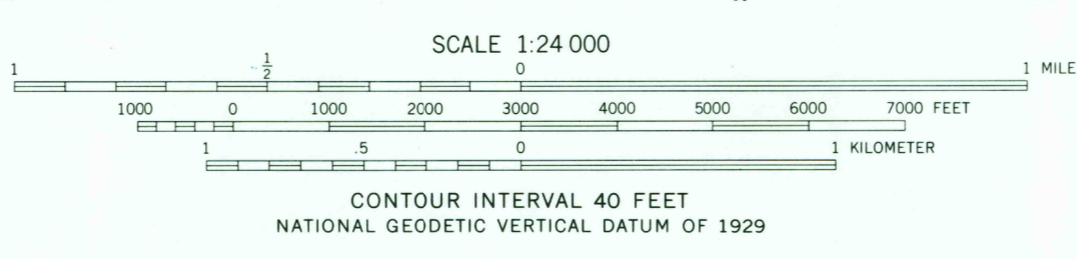
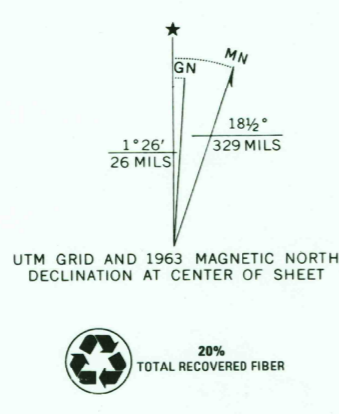
U.S. DEPARTMENT OF THE INTERIOR
U.S. GEOLOGICAL SURVEY

MT. CRAMER QUADRANGLE
IDAHO
7.5 MINUTE SERIES (TOPOGRAPHIC)

3072 III SE (CASBY LAKE)



Mapped, edited, and published by the Geological Survey
Control by USGS and USCGS
Topography by photogrammetric methods from aerial photographs taken 1957. Field checked 1963
Polyconic projection. 1927 North American datum
10,000-foot grid based on Idaho coordinate system, central zone
1000-meter Universal Transverse Mercator grid ticks, zone 11, shown in blue
To place on the predicted North American Datum 1983, move the projection lines 14 meters north and 73 meters east as shown by dashed corner ticks
Where omitted, land lines have not been established
There may be private inholdings within the boundaries of the National or State reservations shown on this map



ROAD CLASSIFICATION
Unimproved dirt -----
MT. CRAMER, IDAHO
N4400—W11452.5/7.5
1963
DMA 3072 III SW—SERIES V893

THIS MAP COMPLIES WITH NATIONAL MAP ACCURACY STANDARDS
FOR SALE BY U.S. GEOLOGICAL SURVEY, P.O. BOX 25286, DENVER, COLORADO 80225
A FOLDER DESCRIBING TOPOGRAPHIC MAPS AND SYMBOLS IS AVAILABLE ON REQUEST

RECEIVED
JAN 07 2003

USGS
HISTORICAL MAP ARCHIVES

