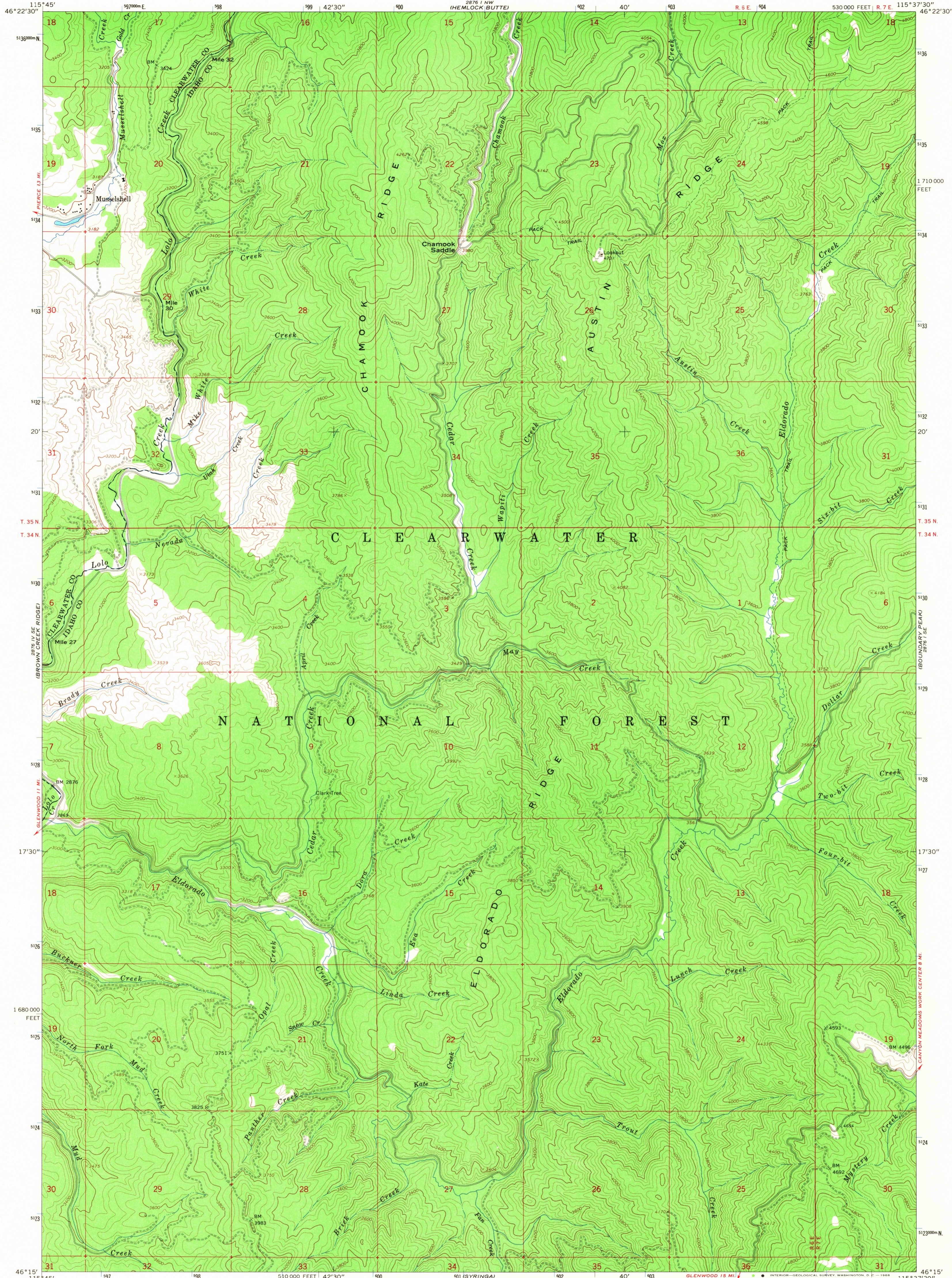
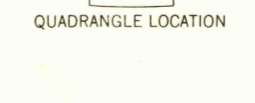
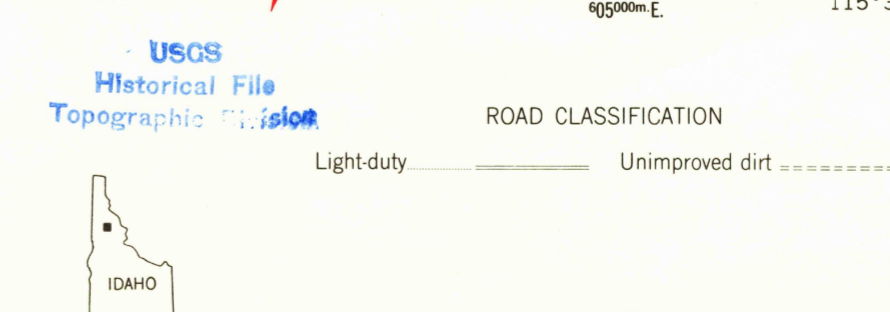
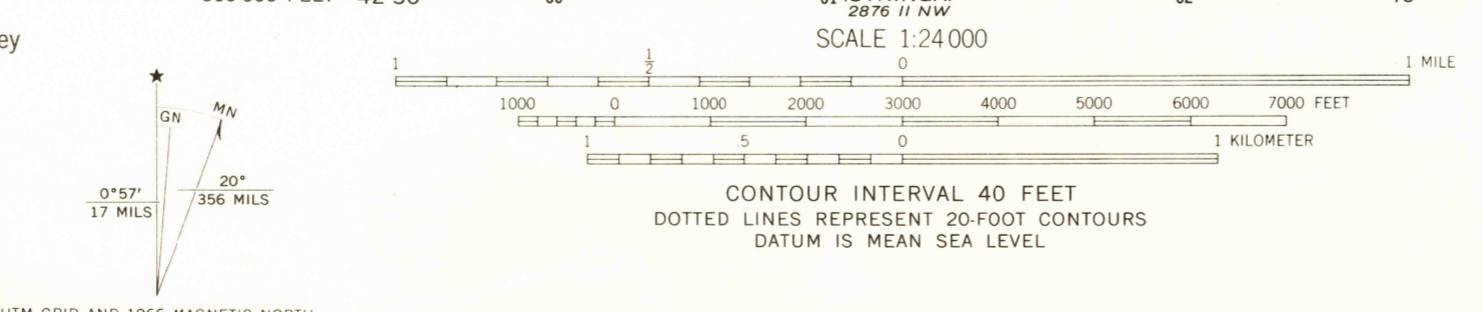


PIERCE 13 MI
115° 45' W
46° 22' 30" N

298 1 MI
115° 37' 30" W
46° 22' 30" N



Mapped, edited, and published by the Geological Survey
Control by USGS and USC&GS
Topography by photogrammetric methods from aerial
photographs taken 1963. Field checked 1966
Polyconic projection. 1927 North American datum
10,000-foot grid based on Idaho coordinate system,
west zone
1000-meter Universal Transverse Mercator grid ticks,
zone 11, shown in blue



MUSSELHELL, IDAHO
N4615-W11537.5/7.5

THIS MAP COMPLIES WITH NATIONAL MAP ACCURACY STANDARDS
FOR SALE BY U. S. GEOLOGICAL SURVEY, DENVER, COLORADO 80225, OR WASHINGTON, D. C. 20242
A FOLDER DESCRIBING TOPOGRAPHIC MAPS AND SYMBOLS IS AVAILABLE ON REQUEST

1966
AMS 2876 1 SW-SERIES V893

U.S.G.S.
FILE COPY
TOPOGRAPHIC DIVISION

2495
SEP 4 1968