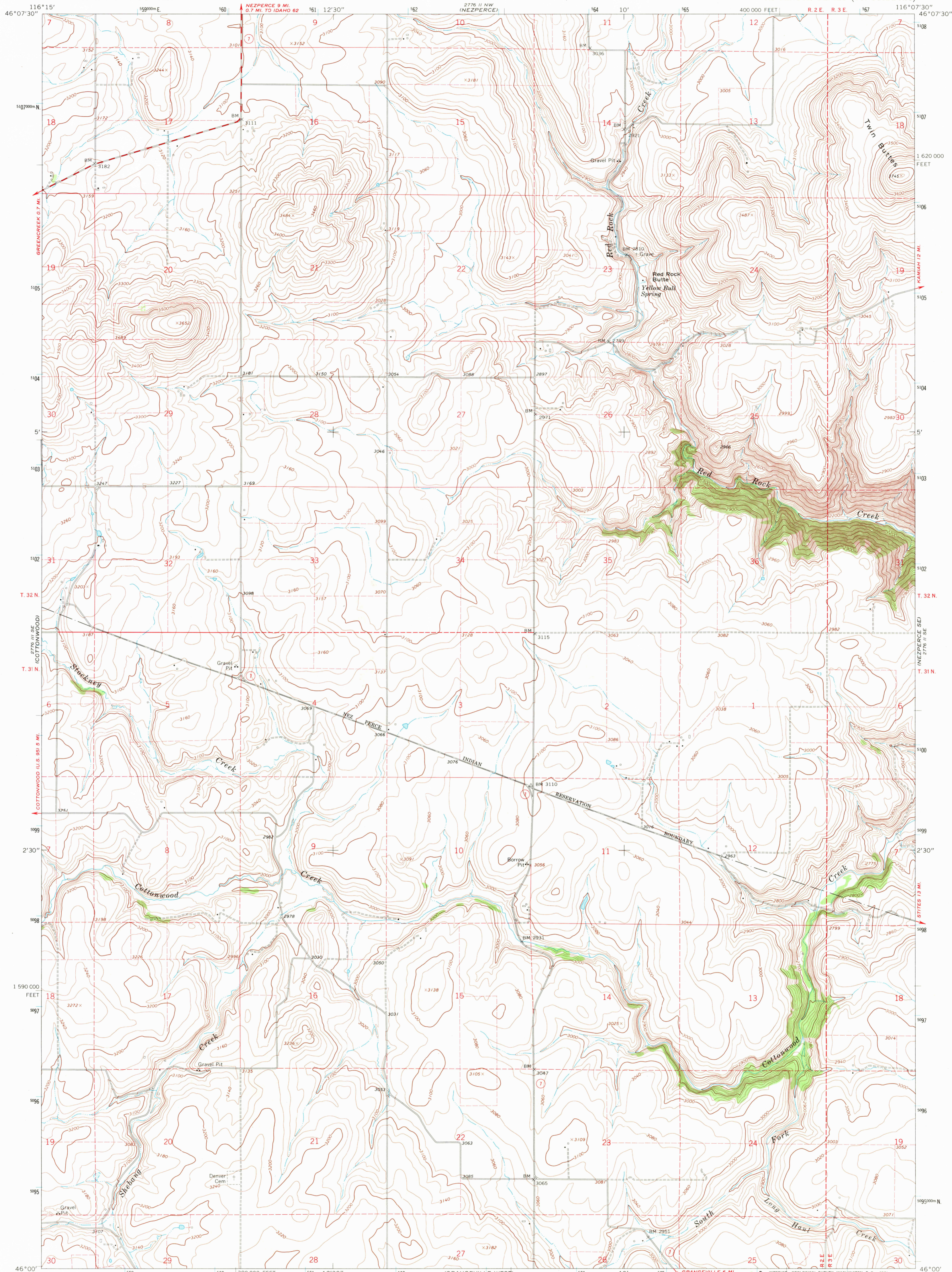
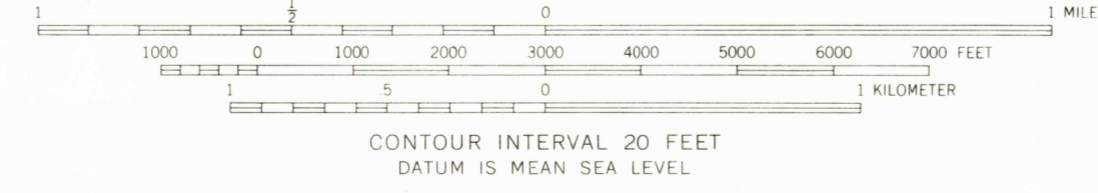
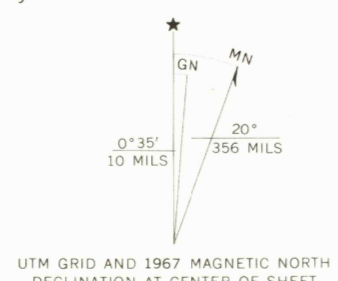


UNITED STATES  
DEPARTMENT OF THE INTERIOR  
GEOLOGICAL SURVEY

NEZPERCE SW QUADRANGLE  
IDAHO-IDAHO CO.  
7.5 MINUTE SERIES (TOPOGRAPHIC)



Mapped, edited, and published by the Geological Survey  
Control by USGS and USC&GS  
Topography by photogrammetric methods from aerial  
photographs taken 1966. Field checked 1967  
Polyconic projection. 1927 North American datum  
10,000-foot grid based on Idaho coordinate system,  
west zone  
1000-meter Universal Transverse Mercator grid ticks,  
zone 11, shown in blue  
Fine red dashed lines indicate selected fence lines



USGS  
Historical Files  
Topographic Division

ROAD CLASSIFICATION  
Medium-duty — Light-duty  
Unimproved dirt —  
State Route



NEZPERCE SW, IDAHO  
N4600-W11607.5/7.5

U.S.G.S.  
FIM'S COPY  
TOPOGRAPHIC DIVISION

2240

THIS MAP COMPLIES WITH NATIONAL MAP ACCURACY STANDARDS  
FOR SALE BY U.S. GEOLOGICAL SURVEY, DENVER, COLORADO 80225, OR WASHINGTON, D. C. 20242  
A FOLDER DESCRIBING TOPOGRAPHIC MAPS AND SYMBOLS IS AVAILABLE ON REQUEST

1967  
AMS 2776 II SW—SERIES V893

JUN 21 1971