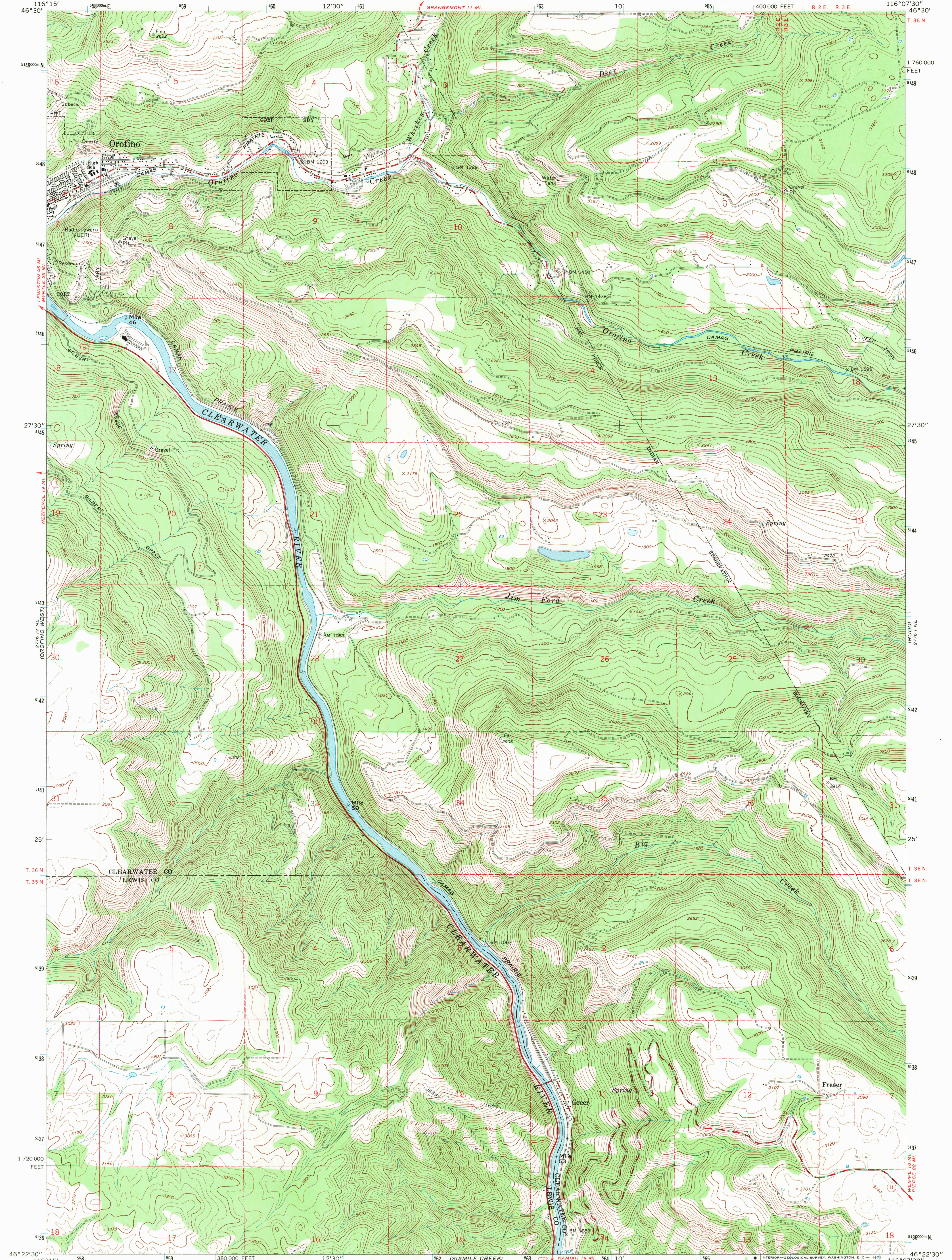


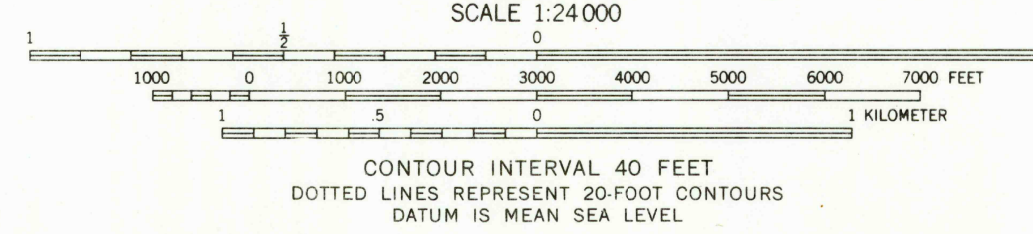
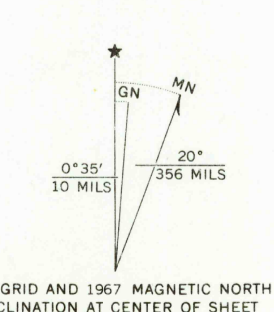
2776 116
1455444
162800

UNITED STATES
DEPARTMENT OF THE INTERIOR
GEOLOGICAL SURVEY

OROFINO EAST QUADRANGLE
IDAHO
7.5 MINUTE SERIES (TOPOGRAPHIC)

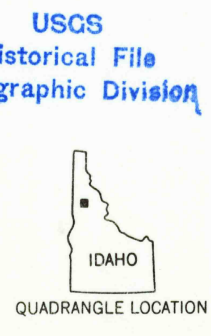


Mapped, edited, and published by the Geological Survey
Control by USGS and USC&GS
Topography by photogrammetric methods from aerial
photographs taken 1966. Field checked 1967
Polyconic projection, 1927 North American datum
10,000-foot grid based on Idaho coordinate system,
west zone
1000-meter Universal Transverse Mercator grid ticks,
zone 11, shown in blue
Fine red dashed lines indicate selected fence lines
Certain land lines are omitted because of insufficient data



THIS MAP COMPLIES WITH NATIONAL MAP ACCURACY STANDARDS
FOR SALE BY U.S. GEOLOGICAL SURVEY, DENVER, COLORADO 80225, OR WASHINGTON, D.C. 20242
A FOLDER DESCRIBING TOPOGRAPHIC MAPS AND SYMBOLS IS AVAILABLE ON REQUEST

USGS
Historical File
Topographic Division



ROAD CLASSIFICATION

Heavy-duty	Light-duty
Medium-duty	Unimproved dirt
U.S. Route	State Route

U.S.G.S.
FILE COPY
TOPOGRAPHIC DIVISION

OROFINO EAST, IDAHO
N4622.5—W11607.5/7.5

1967
AMS 2776 1 NW—SERIES V893

2280

FEB 10 1971