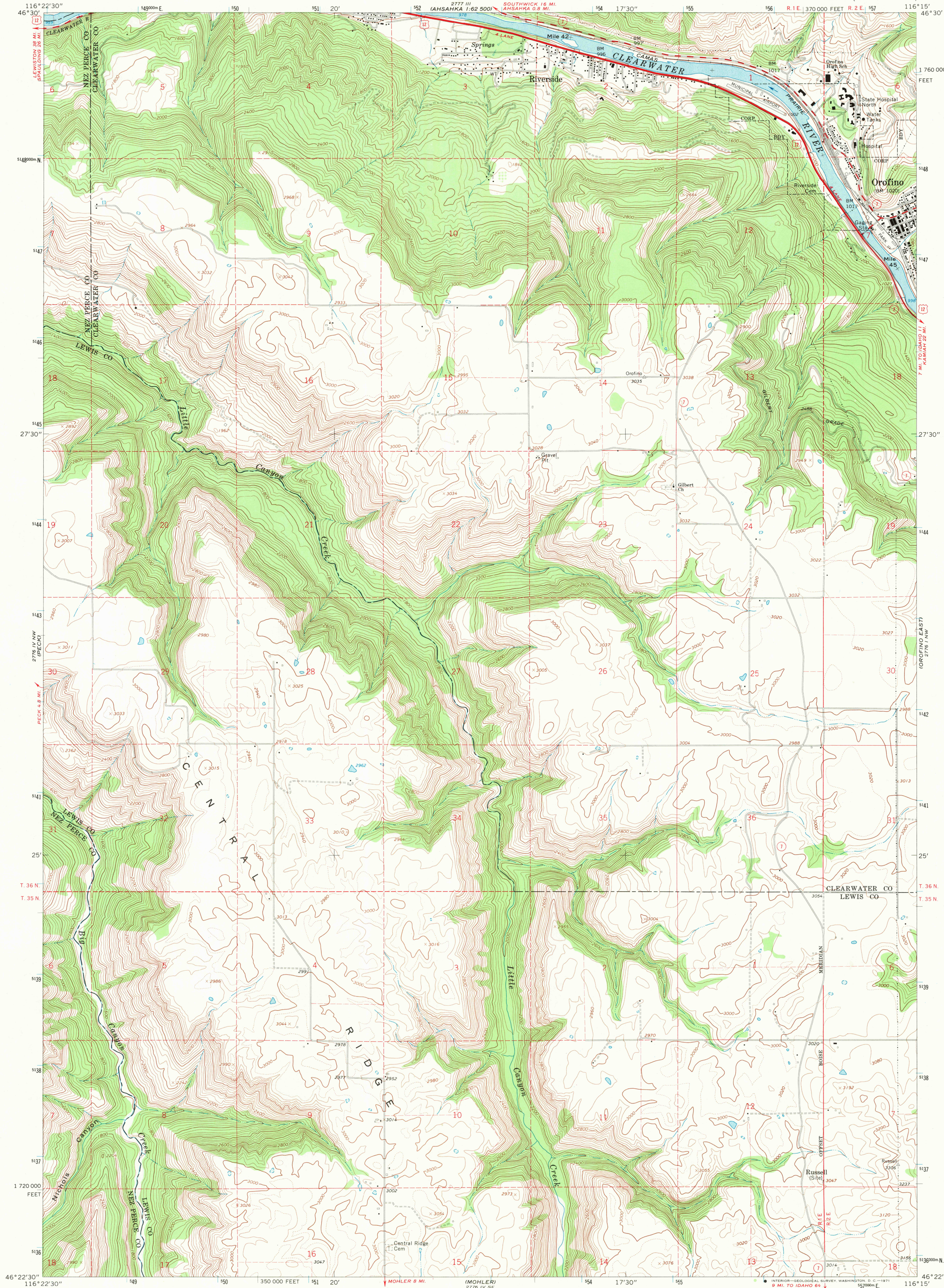
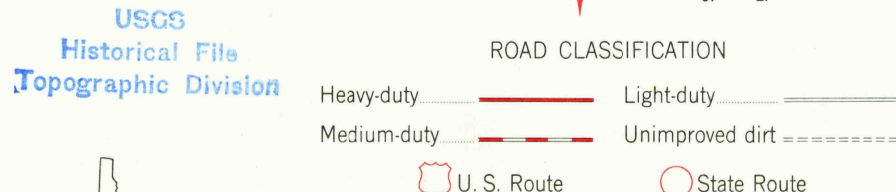
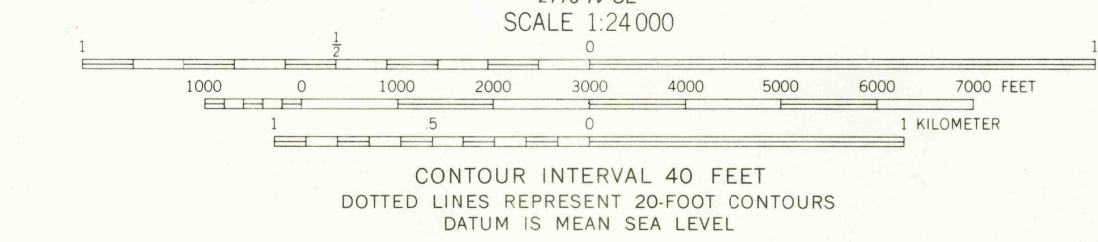
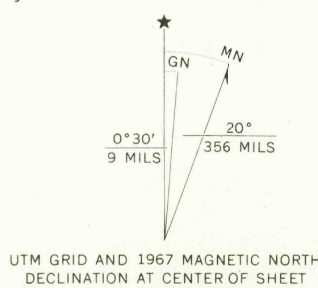


UNITED STATES
DEPARTMENT OF THE INTERIOR
GEOLOGICAL SURVEY

OROFINO WEST QUADRANGLE
IDAHO
7.5 MINUTE SERIES (TOPOGRAPHIC)



Mapped, edited, and published by the Geological Survey
Control by USGS and USC&GS
Topography by photogrammetric methods from aerial
photographs taken 1966. Field checked 1967.
Polyconic projection. 1927 North American datum
10,000-foot grid based on Idaho coordinate system,
west zone
1000-meter Universal Transverse Mercator grid ticks,
zone 11, shown in blue
Fine red dashed lines indicate selected fence lines
Entire area lies within the boundary
of the Nez Perce Indian Reservation



OROFINO WEST, IDAHO
N4622.5-W11615.7.5

1967

AMS 2776 IV NE-SERIES V893

U.S.G.S.
FILE COPY
TOPOGRAPHIC DIVISION

2230

JUL 14 1971