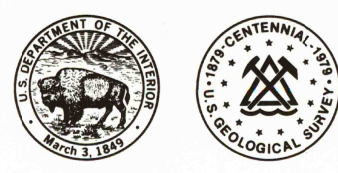


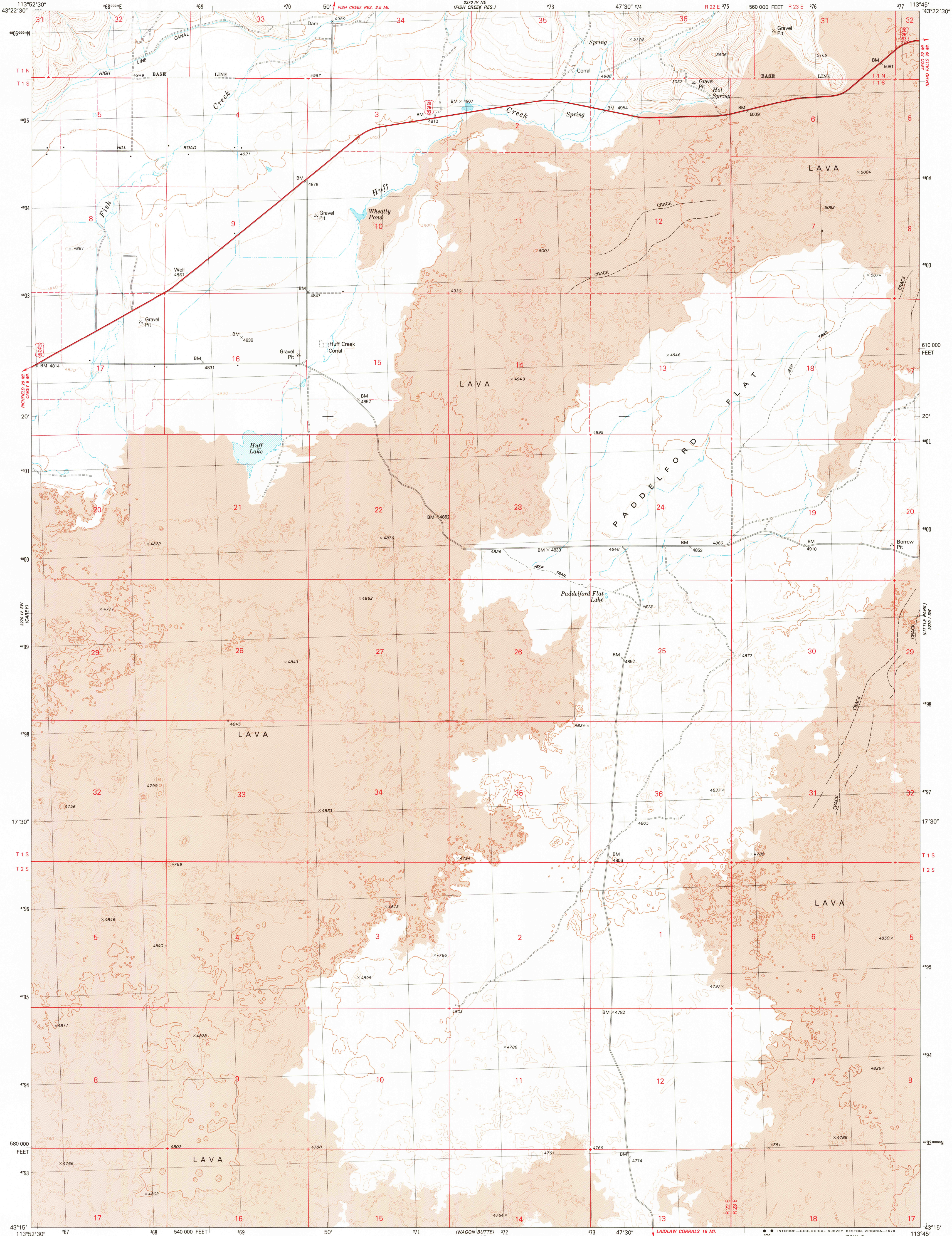
200' BY 200' (LARGE SCALE)

UNITED STATES DEPARTMENT OF THE INTERIOR GEOLOGICAL SURVEY



PADDELFORD FLAT QUADRANGLE IDAHO-BLAINE CO. 7.5 MINUTE SERIES (TOPOGRAPHIC)

300' BY 300' (SMALL SCALE) (BLIZZARD MOUNTAIN SOUTH)



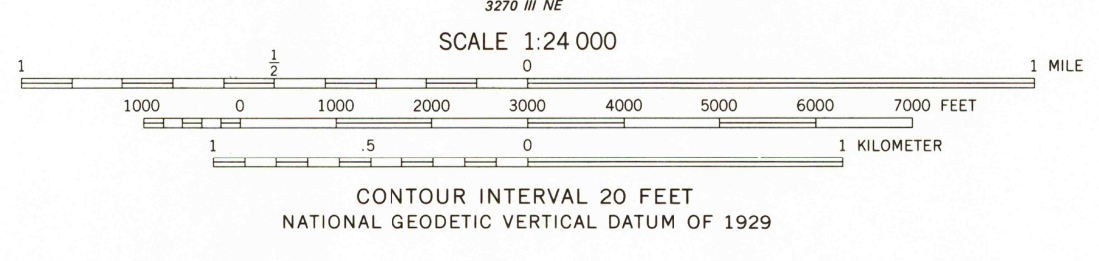
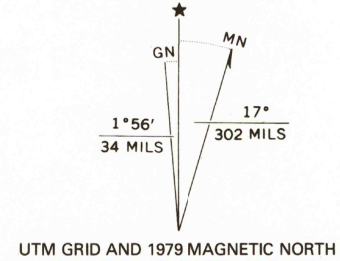
Mapped, edited, and published by the Geological Survey

Control by USGS and NOS/NOAA
Topography by photogrammetric methods from aerial photographs taken 1971. Field checked 1973
Map edited 1979

Projection and 10,000-foot grid ticks: Idaho coordinate system, central zone (transverse Mercator)
1000-meter Universal Transverse Mercator grid, zone 12
1927 North American Datum

To place on the predicted North American Datum 1983
move the projection lines 13 meters north and
70 meters east as shown by dashed corner ticks

Fine red dashed lines indicate selected fence and field lines where generally visible on aerial photographs. This information is unchecked



ROAD CLASSIFICATION

Primary highway, hard surface	Light-duty road, hard or improved surface
Secondary highway, hard surface	Unimproved road
Interstate Route	U. S. Route
	State Route

PADDELFORD FLAT, IDAHO
N4315-W11345/7.5

USGS Historical File Topographic Division
1979
DMA 3270 IV SE-SERIES V893

MAR 25 1980

1800