

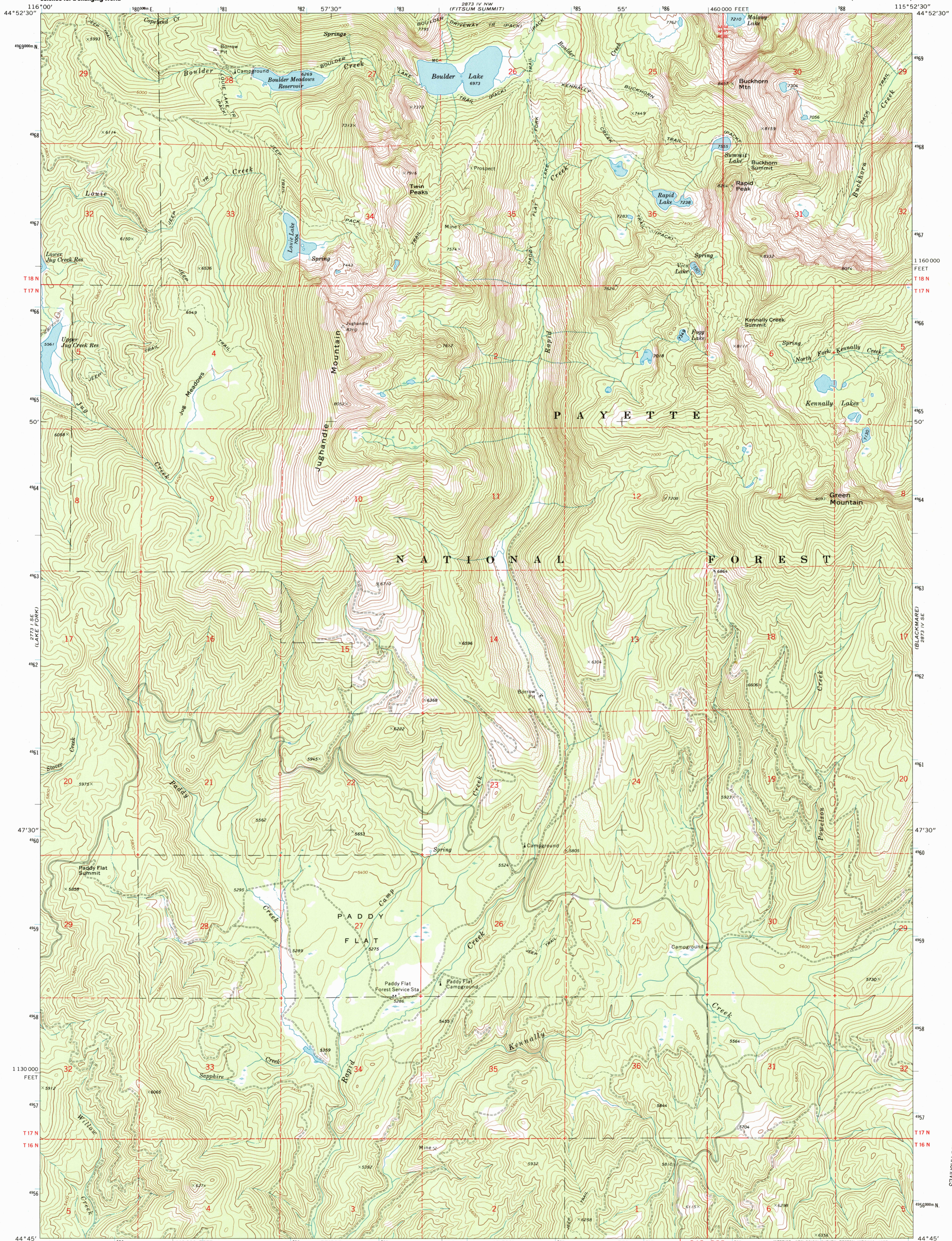
2773 I SE (LAKE FORK)



U.S. DEPARTMENT OF THE INTERIOR
U.S. GEOLOGICAL SURVEY

PADDY FLAT QUADRANGLE
IDAHO—VALLEY CO.
7.5 MINUTE SERIES (TOPOGRAPHIC)

2873 IV NW (FITSUM SUMMIT)



1 160 000
FEET

T 18 N

T 17 N

2773 I SE (LAKE FORK)

2873 IV SE (BLACKWATER)

47°30'

47°30'

45°50'00" N

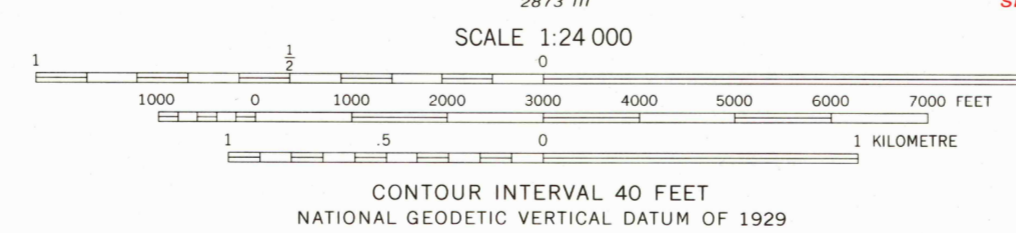
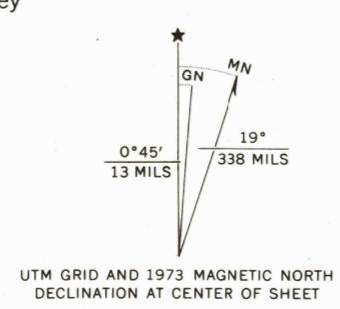
44°45'

T 17 N

T 16 N

44°45'

Mapped, edited, and published by the Geological Survey in cooperation with the U. S. Forest Service
Control by USGS, NOS/NOAA, and USFS
Topography by photogrammetric methods from aerial photographs taken 1965 and 1972. Field checked 1973
Projection and 10,000-foot grid ticks: Idaho coordinate system, west zone (transverse Mercator)
1000-metre Universal Transverse Mercator grid ticks, zone 11, shown in blue. 1927 North American datum



ROAD CLASSIFICATION

Primary highway, hard surface	Light-duty road, hard or improved surface
Secondary highway, hard surface	Unimproved road
Interstate Route	U. S. Route
	State Route

THIS MAP COMPLIES WITH NATIONAL MAP ACCURACY STANDARDS
FOR SALE BY U.S. GEOLOGICAL SURVEY, P.O. BOX 25286, DENVER, COLORADO 80225
A FOLDER DESCRIBING TOPOGRAPHIC MAPS AND SYMBOLS IS AVAILABLE ON REQUEST

PADDY FLAT, IDAHO
N4445-W11552.5/7.5
1973

AMS 2873 IV SW—SERIES V893

RECEIVED
APR 3 0 1999
USGS MWD
HISTORICAL MAP ARCHIVES

