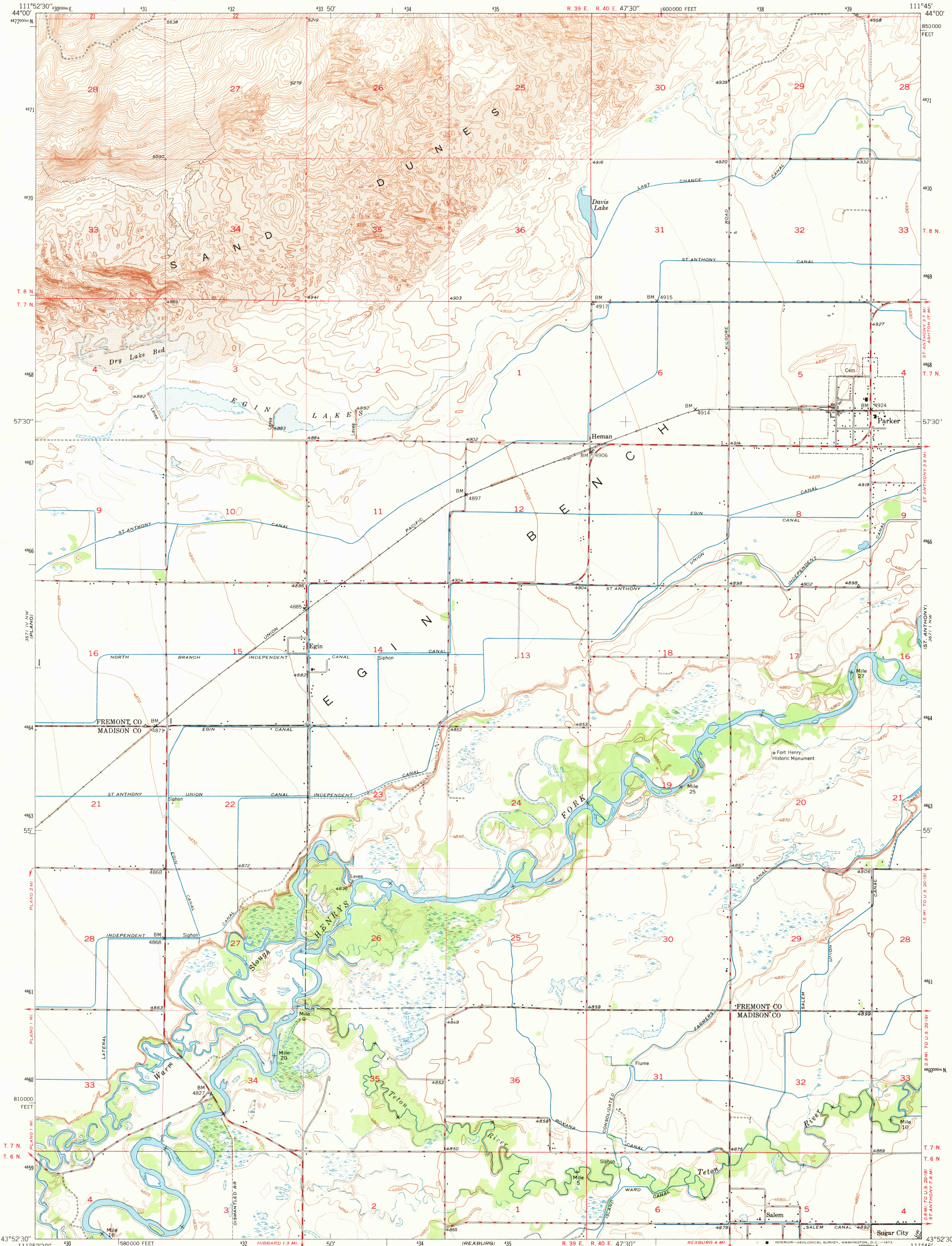
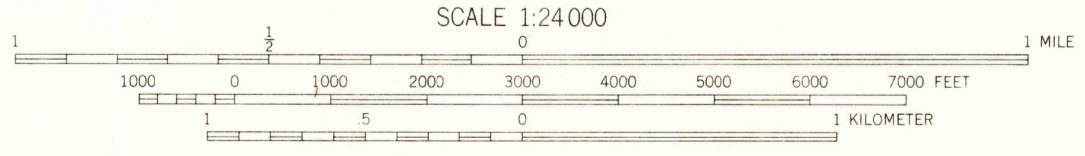
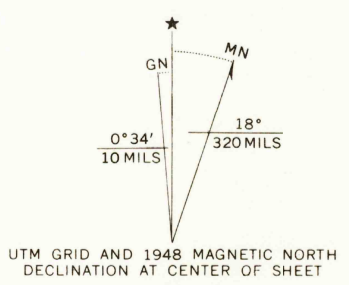


3672 IV NW  
BLACK KYOLU



Mapped, edited, and published by the Geological Survey  
Control by USGS and USC&GS  
Topography from aerial photographs by multiplex methods  
and by plane-table surveys 1948  
Aerial photographs taken 1946  
Polyconic projection. 1927 North American datum  
10,000-foot grid based on Idaho coordinate system,  
east zone  
1000-meter Universal Transverse Mercator grid ticks,  
zone 12, shown in blue



CONTOUR INTERVAL 10 FEET  
DOTTED LINES REPRESENT HALF-INTERVAL CONTOURS  
DATUM IS MEAN SEA LEVEL

THIS MAP COMPLIES WITH NATIONAL MAP ACCURACY STANDARDS  
FOR SALE BY U.S. GEOLOGICAL SURVEY, DENVER, COLORADO 80225, OR WASHINGTON, D.C. 20242  
A FOLDER DESCRIBING TOPOGRAPHIC MAPS AND SYMBOLS IS AVAILABLE ON REQUEST

ROAD CLASSIFICATION

HARD-SURFACE ALL WEATHER ROADS	DRY WEATHER ROADS
Heavy-duty	Improved dirt
Medium-duty	Unimproved dirt
Loose surface, graded, or narrow hard-surface	State Route
U. S. Route	State Route

PARKER, IDAHO  
N4352.5-W11145/7.5  
1948  
AMS 3671 IV NE SERIES V893

FEB 14 1973

1270

USGS  
HISTORICAL FILE  
TOPOGRAPHIC DIVISION