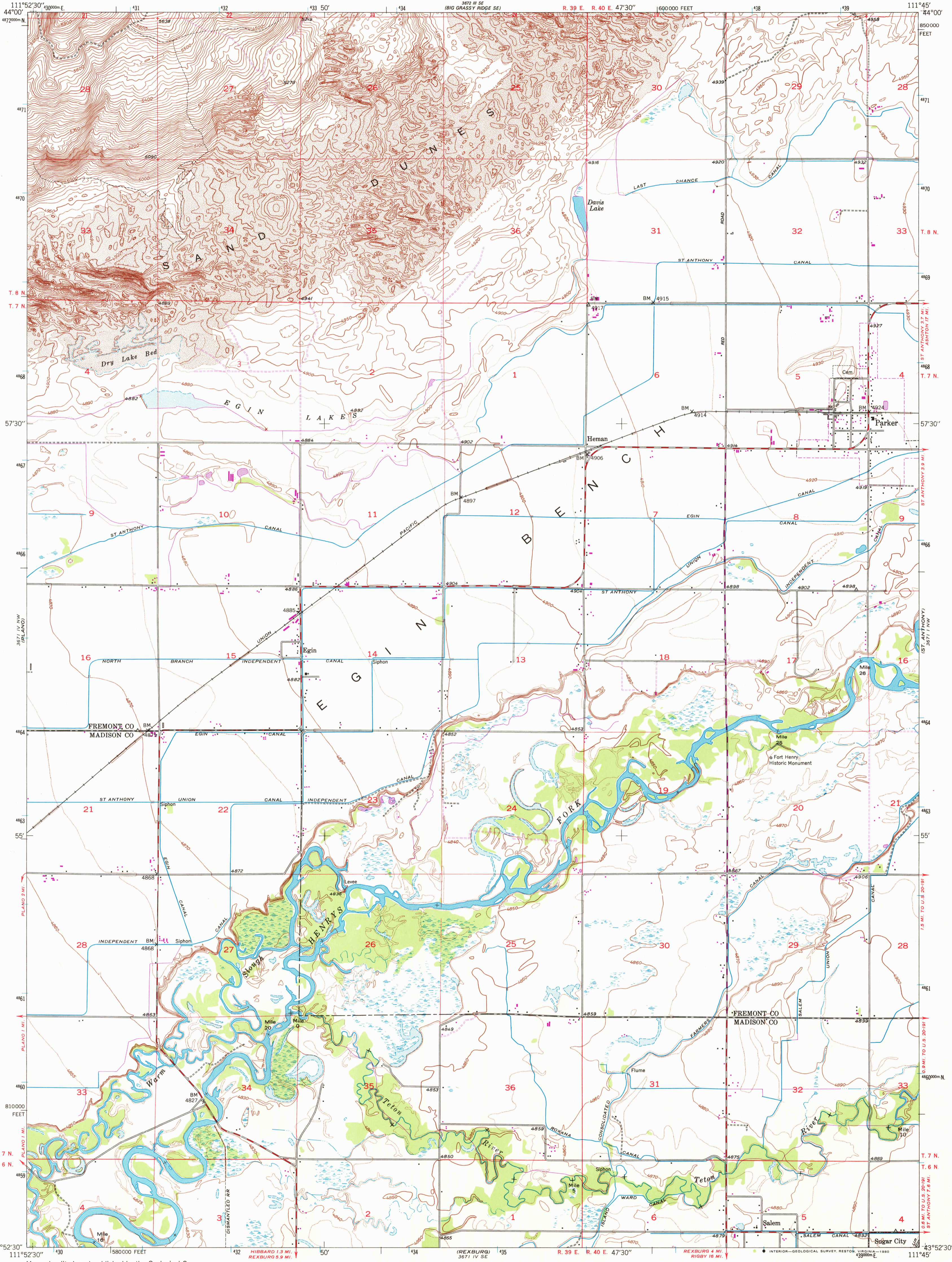


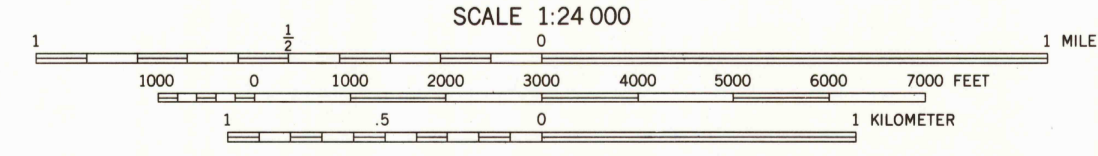
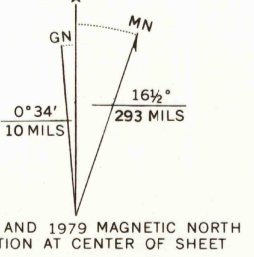
UNITED STATES  
DEPARTMENT OF THE INTERIOR  
GEOLOGICAL SURVEY

PARKER QUADRANGLE  
IDAHO  
7.5 MINUTE SERIES (TOPOGRAPHIC)



Mapped, edited, and published by the Geological Survey

Control by USGS and NOS/NOAA  
Topography from aerial photographs by multiplex methods and by plane-table surveys 1948  
Aerial photographs taken 1946  
Polyconic projection. 1927 North American datum 10,000-foot grid based on Idaho coordinate system, east zone  
1000-meter Universal Transverse Mercator grid ticks, zone 12, shown in blue  
To place on the predicted North American Datum 1983, move the projection lines 12 meters north and 65 meters east as shown by dashed corner ticks



CONTOUR INTERVAL 10 FEET  
DOTTED LINES REPRESENT 5-FOOT CONTOURS  
NATIONAL GEODETIC VERTICAL DATUM OF 1929



ROAD CLASSIFICATION  
Primary highway, all weather, Light-duty road, all weather, hard surface, Improved surface  
Secondary highway, all weather, Unimproved road, fair or dry hard surface, weather  
U.S. Route  
State Route

Historical File  
Topographic Division  
PARKER, IDAHO  
N4352.5-W11145/7.5  
1948  
PHOTOREVISED 1979  
DMA 3671 IV NE—SERIES 1893

THIS MAP COMPLIES WITH NATIONAL MAP ACCURACY STANDARDS  
FOR SALE BY U.S. GEOLOGICAL SURVEY, DENVER, COLORADO 80225, OR RESTON, VIRGINIA 22092  
A FOLDER DESCRIBING TOPOGRAPHIC MAPS AND SYMBOLS IS AVAILABLE ON REQUEST

Revisions shown in purple compiled from aerial photographs taken 1976 and other source data. This information not field checked. Map edited 1979

AUG 20 1980

2200