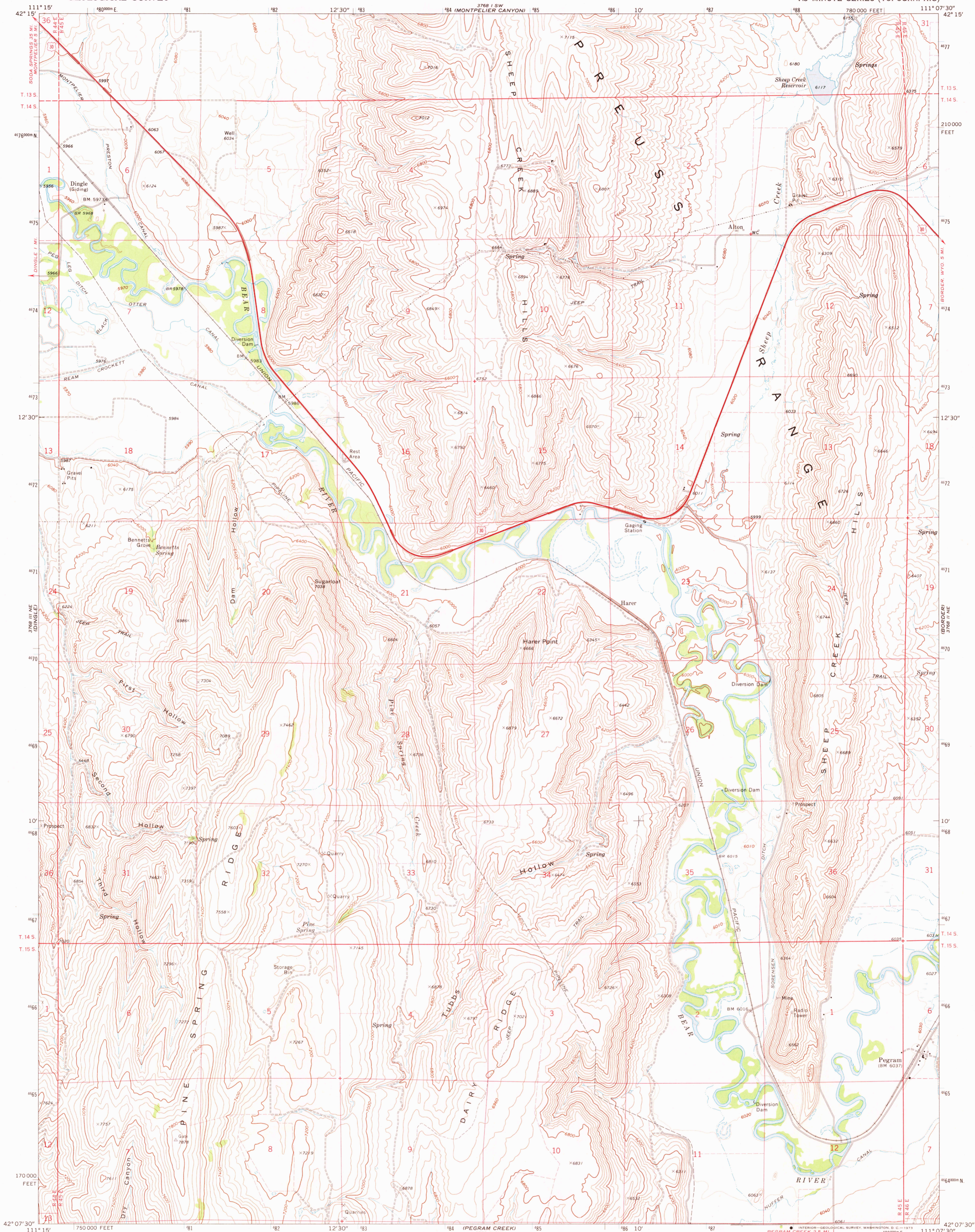
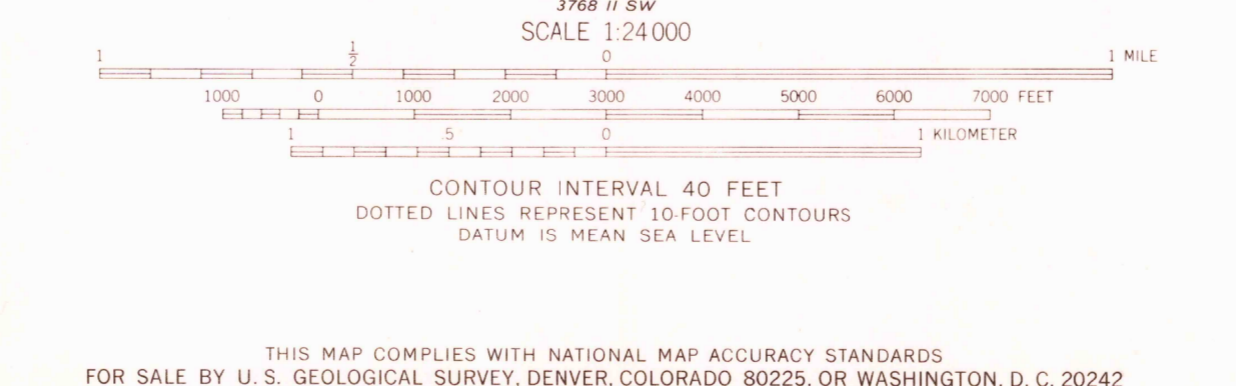
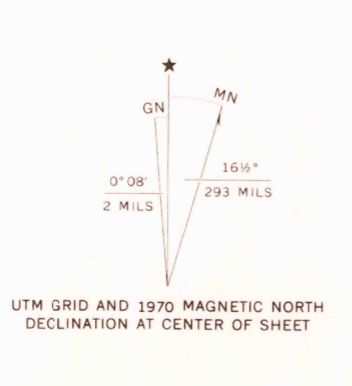


UNITED STATES
DEPARTMENT OF THE INTERIOR
GEOLOGICAL SURVEY

PEGRAM QUADRANGLE
IDAHO-BEAR LAKE CO.
7.5 MINUTE SERIES (TOPOGRAPHIC)



Mapped, edited, and published by the Geological Survey
Control by USGS and USC&GS
Topography by photogrammetric methods from aerial
photographs taken 1969 and 1970. Field checked 1970
Polyconic projection, 1927 North American datum
10,000-foot grid based on Idaho coordinate system,
east zone
1000-meter Universal Transverse Mercator grid ticks,
zone 12, shown in blue
Fine red dashed lines indicate selected fence lines
Certain land lines are omitted because of insufficient data



ROAD CLASSIFICATION

- Primary highway, hard surface
- Secondary highway, hard surface
- Unimproved road
- Light duty road, hard or improved surface

 Interstate Route
 U.S. Route
 State Route



THIS MAP COMPLIES WITH NATIONAL MAP ACCURACY STANDARDS
FOR SALE BY U.S. GEOLOGICAL SURVEY, DENVER, COLORADO 80225, OR WASHINGTON, D.C. 20242
A FOLDER DESCRIBING TOPOGRAPHIC MAPS AND SYMBOLS IS AVAILABLE ON REQUEST

USGS
HISTORICAL FILE
TOPOGRAPHIC DIVISION

PEGRAM, IDAHO
N4207.5-W11107.5/7.5
1970

AMS 3768 II NW-SERIES V893

MAR 20 1973

2660