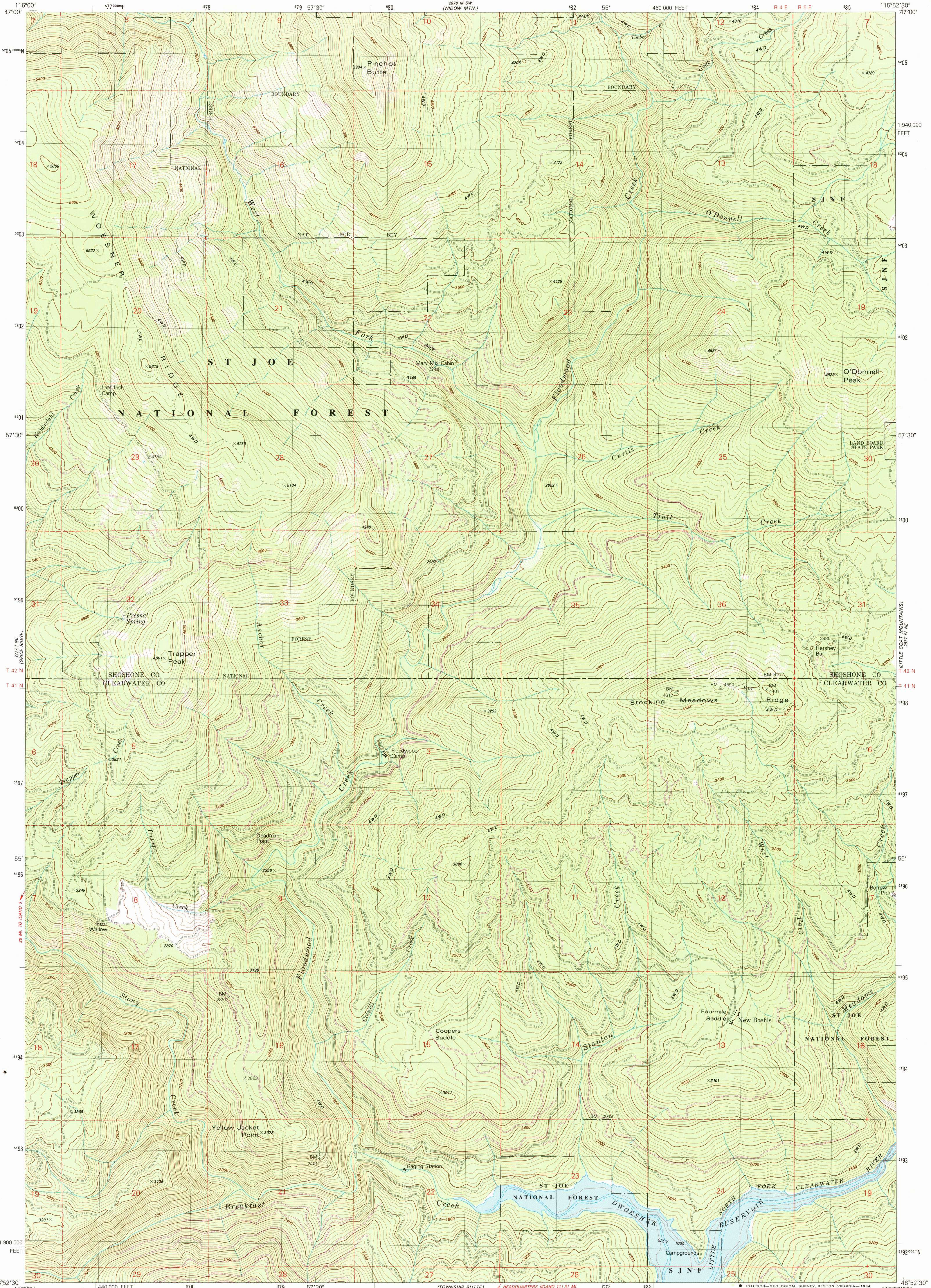


UNITED STATES
DEPARTMENT OF THE INTERIOR
GEOLOGICAL SURVEY

PINCHOT BUTTE QUADRANGLE
IDAHO
7.5 MINUTE SERIES (TOPOGRAPHIC)
NW/4 BOEHLER BUTTE 15' QUADRANGLE



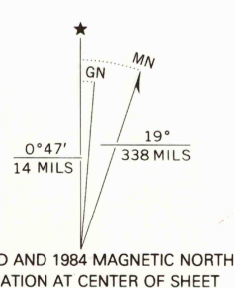
Mapped, edited, and published by the Geological Survey

Control by USGS and NOS/NOAA

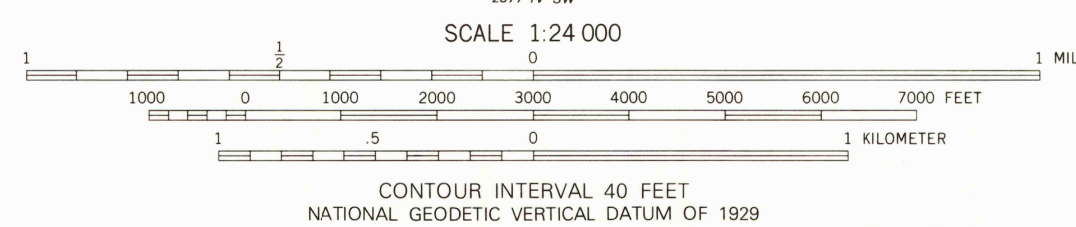
Topography by photogrammetric methods from aerial photographs taken 1974. Field checked 1975. Map edited 1981
Underwater contours by USCE

Projection and 10,000-foot grid ticks: Idaho coordinate system, west zone (transverse Mercator)
1000-meter Universal Transverse Mercator grid, zone 11
1927 North American Datum
To place on the predicted North American Datum 1983 move the projection lines 14 meters north and 75 meters east as shown by dashed corner ticks

There may be private inholdings within the boundaries of the National or State reservations shown on this map



UTM GRID AND 1984 MAGNETIC NORTH DECLINATION AT CENTER OF SHEET



SCALE 1:24 000
CONTOUR INTERVAL 40 FEET
NATIONAL GEODETIC VERTICAL DATUM OF 1929



QUADRANGLE LOCATION

ROAD CLASSIFICATION	
Primary highway, hard surface	Light-duty road, hard or improved surface
Secondary highway, hard surface	Unimproved road
Interstate Route	U. S. Route
	State Route

PINCHOT BUTTE, IDAHO
NW/4 BOEHLER BUTTE 15' QUADRANGLE
N4652.5-W11552.5/7.5

1981
PHOTOREVISED 1984
DMA 2877 IV NW--SERIES V983

FOR SALE BY U. S. GEOLOGICAL SURVEY, DENVER, COLORADO 80225, OR RESTON, VIRGINIA 22092
A FOLDER DESCRIBING TOPOGRAPHIC MAPS AND SYMBOLS IS AVAILABLE ON REQUEST

Revisions shown in purple and woodland compiled from aerial photographs taken 1982 and other sources.
Partial field check by U.S. Forest Service. Map edited 1984