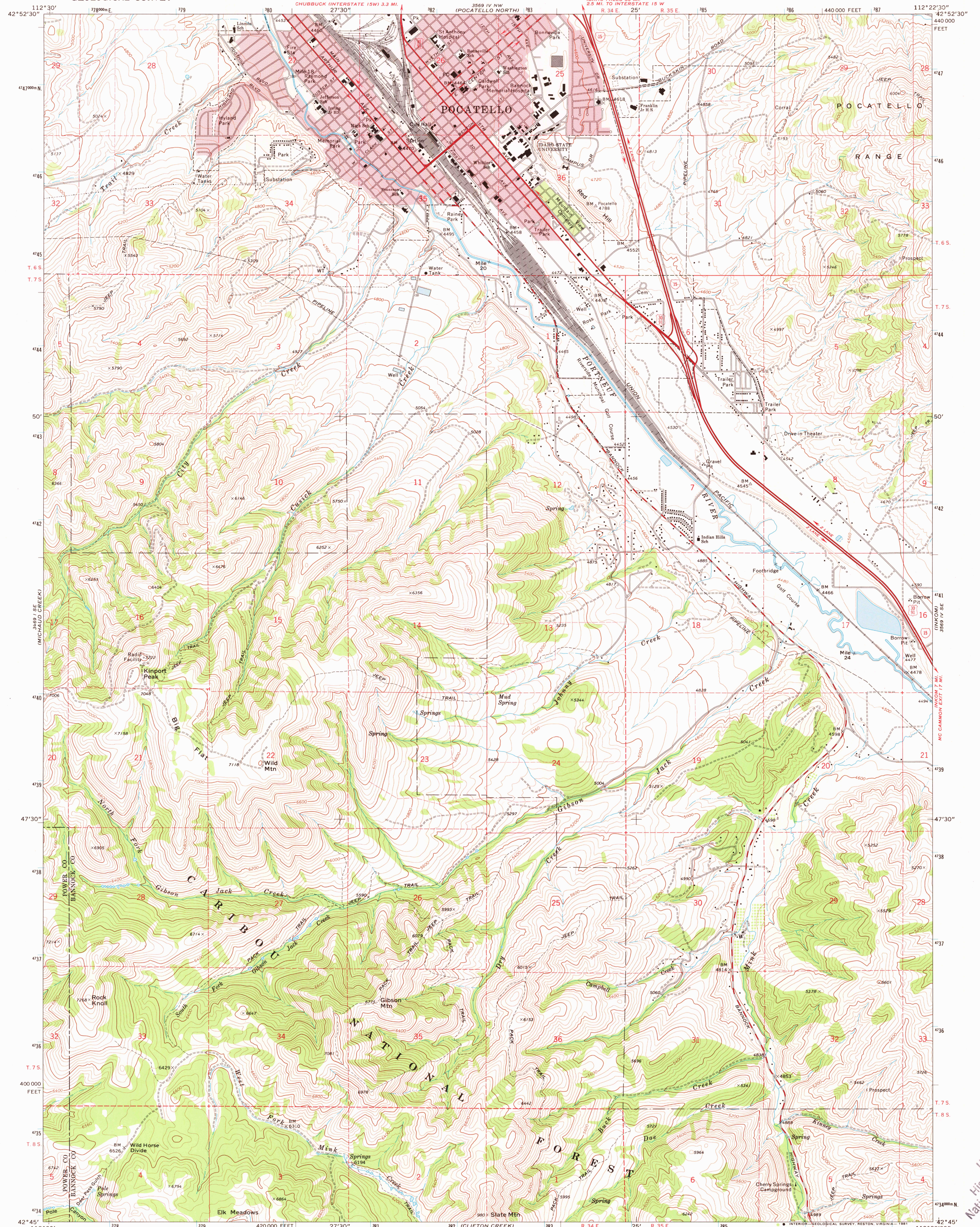


3469 I SE
(MICHAUD CREEK)

UNITED STATES
DEPARTMENT OF THE INTERIOR
GEOLOGICAL SURVEY

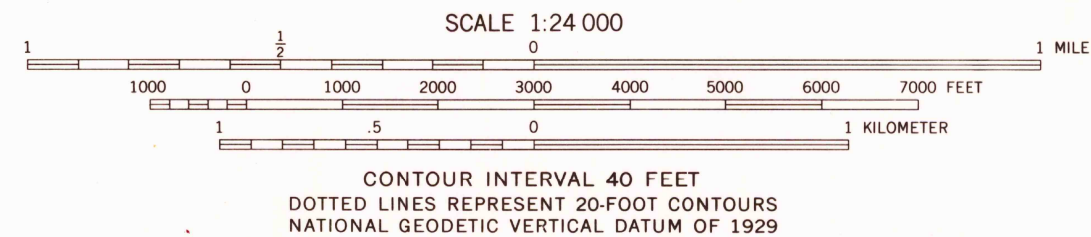
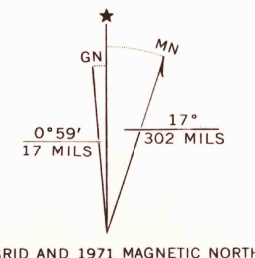
POCATELLO SOUTH QUADRANGLE
IDAHO
7.5 MINUTE SERIES (TOPOGRAPHIC)

3469 I N
(MOONLIGHT MTN)



(FLATIRON HILL)
3469 I SE

Mapped, edited, and published by the Geological Survey
Control by USGS and USC&GS
Topography by photogrammetric methods from aerial
photographs taken 1969. Field checked 1971
Projection and 10,000-foot grid ticks: Idaho coordinate
system, east zone (transverse Mercator)
1000-meter Universal Transverse Mercator grid ticks,
zone 12, shown in blue. 1927 North American datum
To place on the predicted North American Datum 1983
move the projection lines 12 meters north and
67 meters east as shown by dashed corner ticks
There may be private inholdings within the boundaries of
the National or State reservations shown on this map
Red tint indicates areas in which only landmark buildings are shown
Fine red dashed lines indicate selected fence lines



ROAD CLASSIFICATION	
Primary highway, hard surface	Light-duty road, hard or improved surface
Secondary highway, hard surface	Unimproved road
Interstate Route	U.S. Route
	State Route

POCATELLO SOUTH, IDAHO
N4245-W1122.5/7.5
1971
PHOTOINSPECTED 1974
DMA 3569 IV SW-SERIES V893

USGS
Historical File
National Mapping Div.

1700
MAR 27 1981