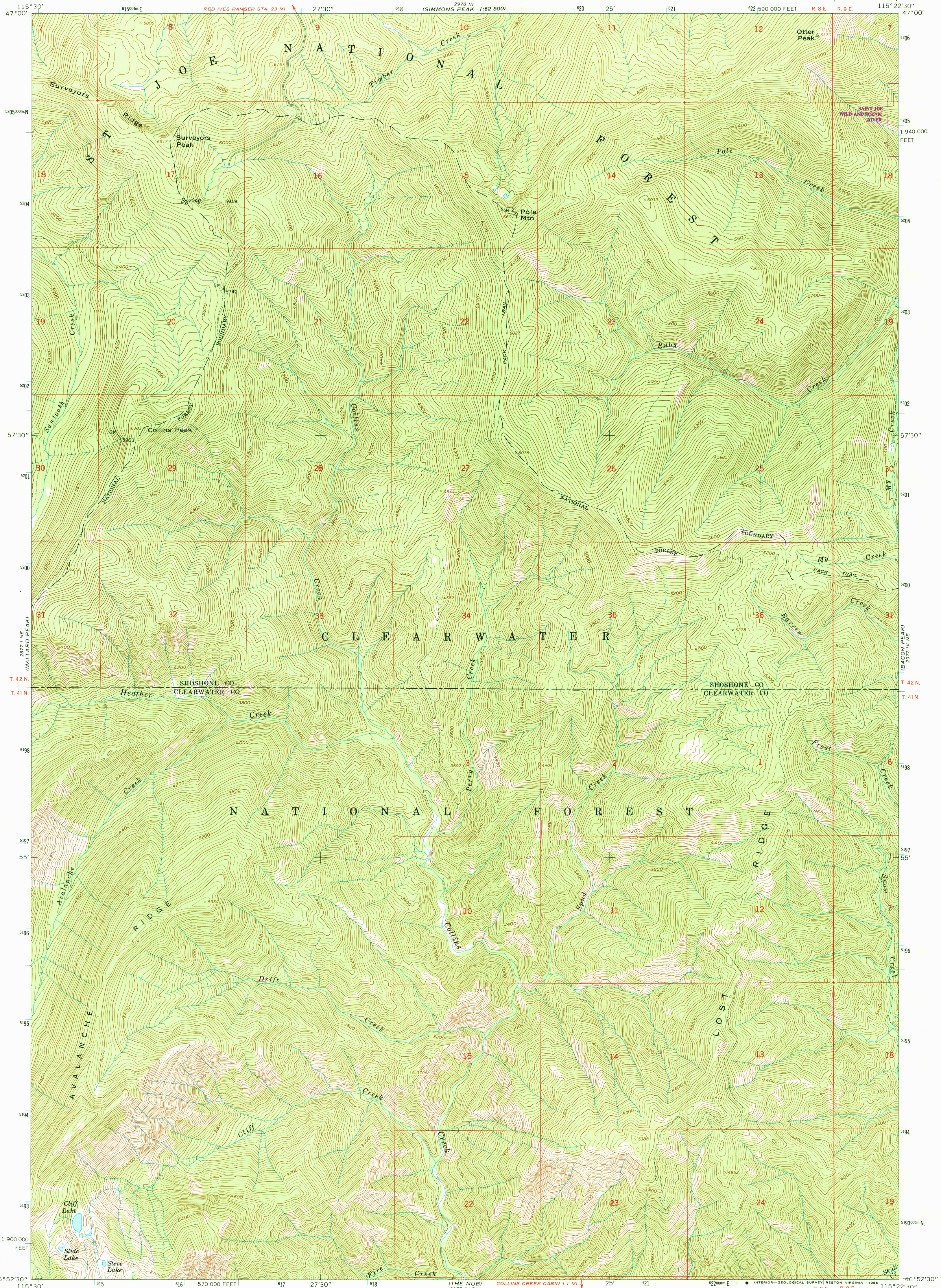
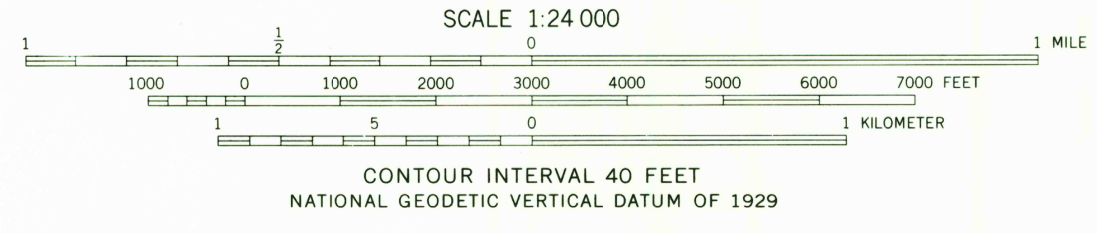
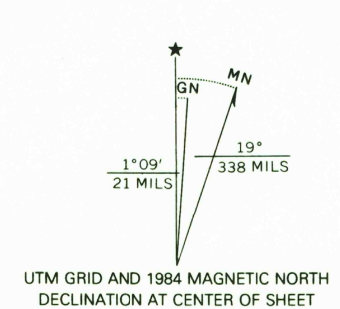


UNITED STATES
DEPARTMENT OF THE INTERIOR
GEOLOGICAL SURVEY

POLE MTN, QUADRANGLE
IDAHO
7.5 MINUTE SERIES (TOPOGRAPHIC)



Mapped by the U.S. Forest Service
Edited and published by the Geological Survey
Control by USGS, NOS/NOAA, and USFS
Topography by photogrammetric methods from aerial
photographs taken 1956 and 1959.
Field checked by USGS 1963.
Polyconic projection. 1927 North American datum
10,000-foot grid based on Idaho coordinate system, west zone
1000-meter Universal Transverse Mercator grid ticks,
zone 11, shown in blue
To place on the predicted North American Datum 1983
move the projection lines 13 meters north and
74 meters east as shown by dashed corner ticks
There may be private inholdings within the boundaries of
the National or State reservations shown on this map



POLE MTN., IDAHO
N4652.5-W11522.5/7.5

THIS MAP COMPLIES WITH NATIONAL MAP ACCURACY STANDARDS
FOR SALE BY U. S. GEOLOGICAL SURVEY, DENVER, COLORADO 80225, OR RESTON, VIRGINIA 22092
A FOLDER DESCRIBING TOPOGRAPHIC MAPS AND SYMBOLS IS AVAILABLE ON REQUEST

Revisions shown in purple and woodland compiled from
aerial photographs taken 1982 and other sources
Partial field check by U.S. Forest Service. Map edited 1984

1963
PHOTOREVISED 1984
DMA 2977 IV NW—SERIES V893