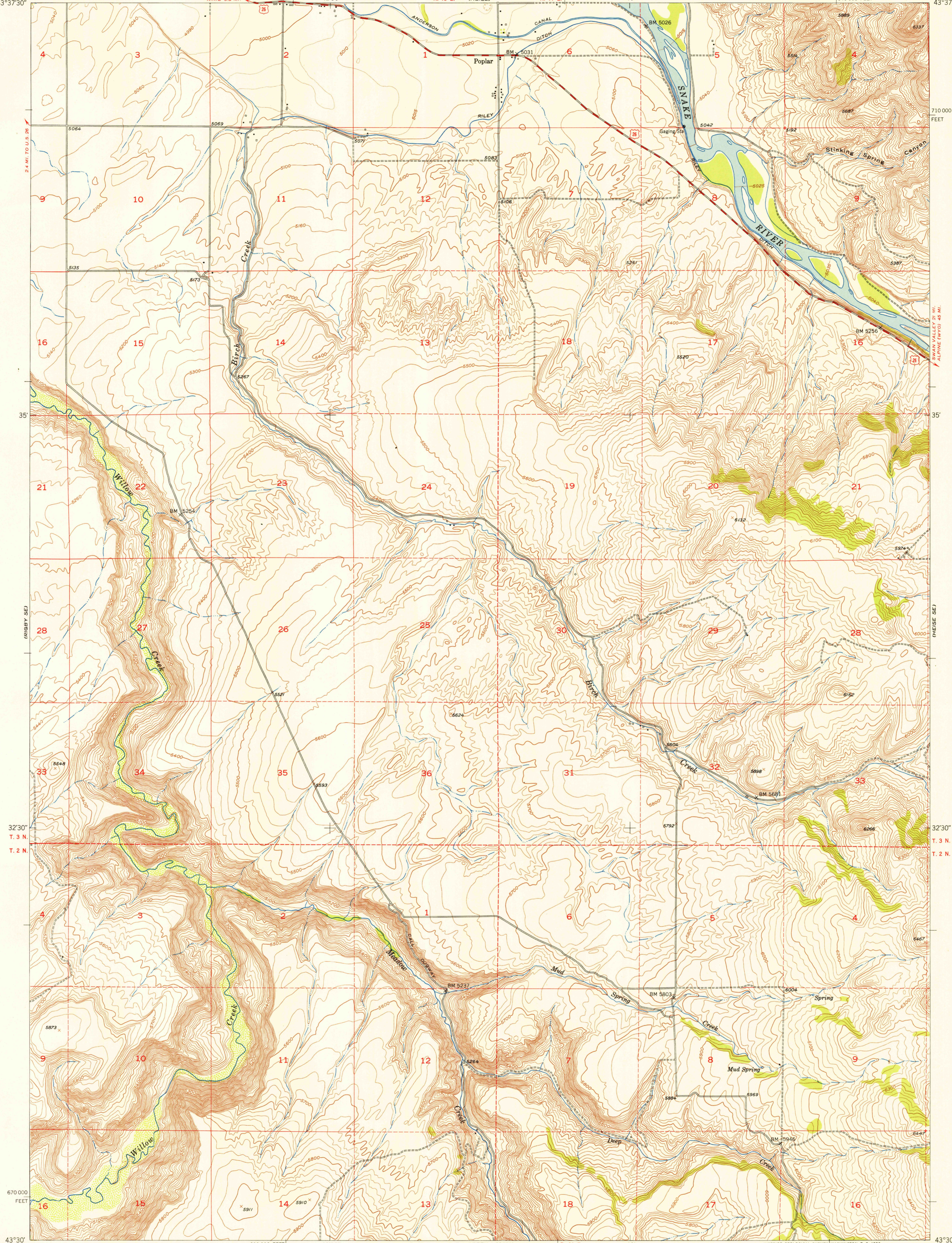


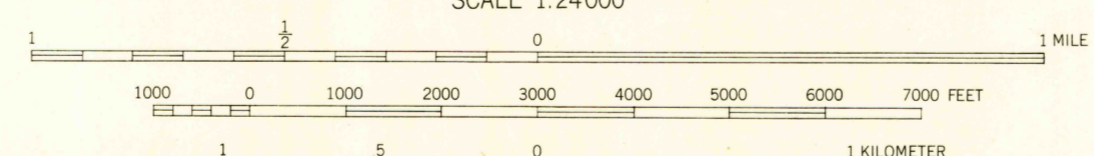
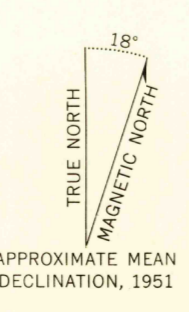
111°45' 43°37'30" 42°30' 40' 111°37'30" 43°37'30"

U.S.G.S.
FILE COPY
Inspection and Editing.



111°45' 620 000 FEET 42°30' R. 40 E. (HELL CREEK 1:62500) R. 41 E. 40' 111°37'30" 43°30'

Mapped, edited, and published by the Geological Survey
Control by USGS and USC&GS
Topography from aerial photographs by multiplex methods
and by plane-table surveys 1951. Aerial photographs taken 1946
Polyconic projection. 1927 North American datum
10,000-foot grid based on Idaho coordinate system, east zone
Dashed land lines indicate approximate locations



CONTOUR INTERVAL 20 FEET
DOTTED LINES REPRESENT 5 FOOT CONTOURS
DATUM IS MEAN SEA LEVEL

ROAD CLASSIFICATION

Heavy-duty	4 LANE 6 LANE	Light-duty	2 LANE 4 LANE
Medium-duty	4 LANE 6 LANE	Unimproved dirt	-----
U.S. Route	□	State Route	○

THIS MAP COMPLIES WITH NATIONAL MAP ACCURACY STANDARDS
FOR SALE BY U.S. GEOLOGICAL SURVEY, FEDERAL CENTER, DENVER, COLORADO OR WASHINGTON 25, D. C.
A FOLDER DESCRIBING TOPOGRAPHIC MAPS AND SYMBOLS IS AVAILABLE ON REQUEST

U.S.G.S.
Historical File
Topographic Division U.S.
FILE COPY
Inspection and Editing.

POPLAR, IDAHO
N4330-W11137.5/7.5
1951