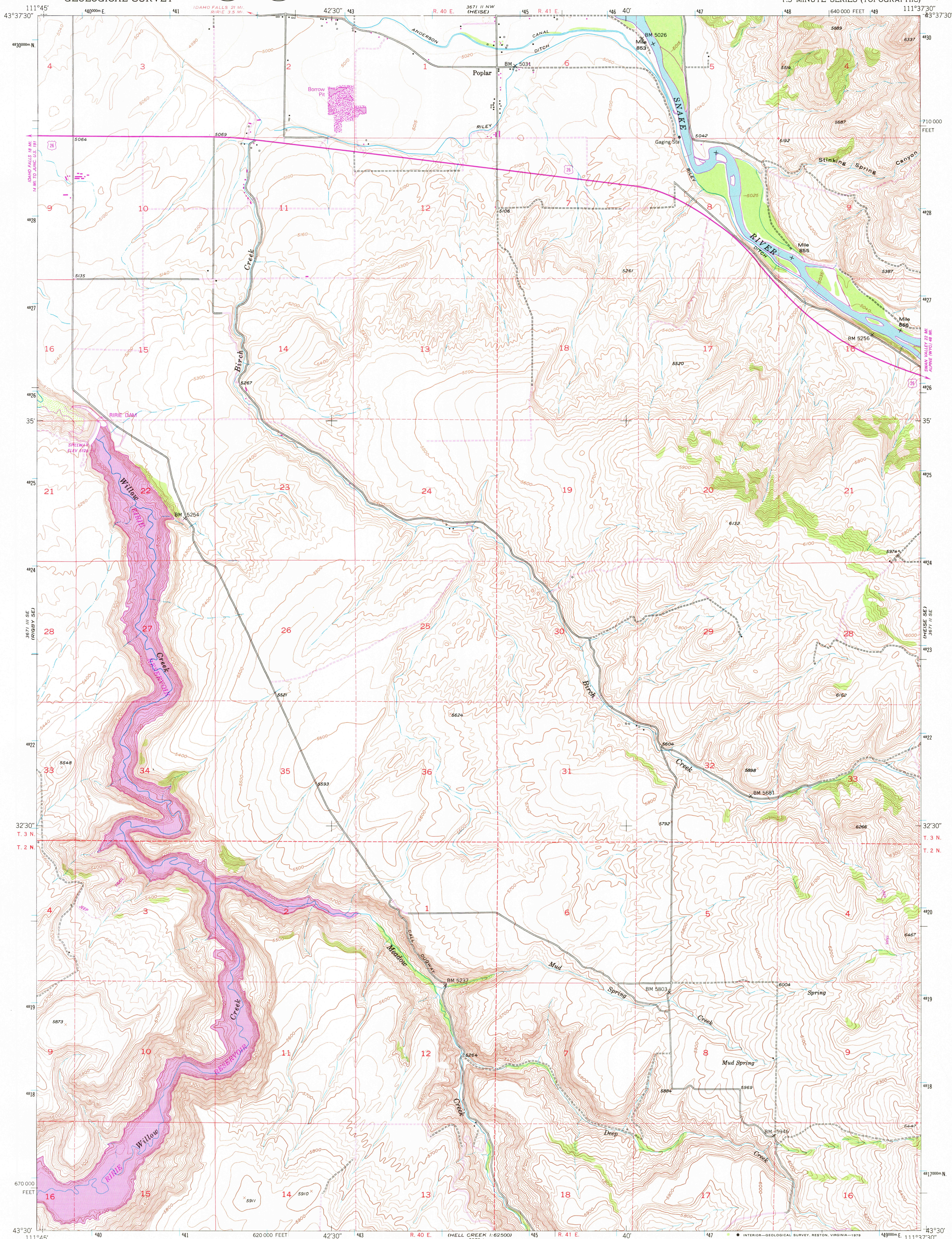
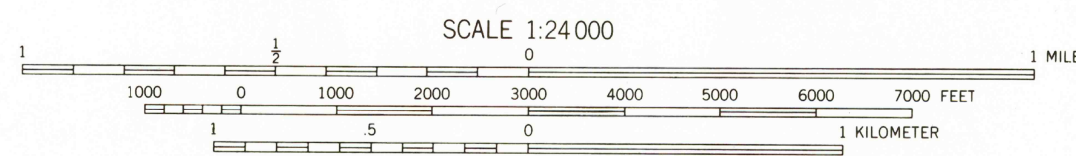
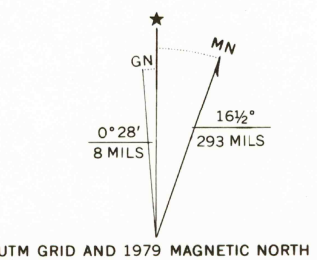


3671 1/2 NE
HAWLEY GULCH



Mapped, edited, and published by the Geological Survey
Control by USGS and NOS/NOAA
Topography from aerial photographs by multiplex methods
and by plane-table surveys 1951. Aerial photographs taken 1946
Polyconic projection. 1927 North American datum
10,000-foot grid based on Idaho coordinate system, east zone
Dashed land lines indicate approximate locations
1000-meter Universal Transverse Mercator grid ticks,
zone 12, shown in blue
To place on the predicted North American Datum 1983,
move the projection lines 12 meters north and
65 meters east as shown by dashed corner ticks



CONTOUR INTERVAL 20 FEET
DOTTED LINES REPRESENT 5 FOOT CONTOURS
NATIONAL GEODETIC VERTICAL DATUM OF 1929

THIS MAP COMPLIES WITH NATIONAL MAP ACCURACY STANDARDS
FOR SALE BY U. S. GEOLOGICAL SURVEY, DENVER, COLORADO 80225, OR RESTON, VIRGINIA 22092
A FOLDER DESCRIBING TOPOGRAPHIC MAPS AND SYMBOLS IS AVAILABLE ON REQUEST

ROAD CLASSIFICATION

Heavy-duty	4 LANE 16 LANE	Light-duty
Medium-duty	4 LANE 16 LANE	Unimproved dirt

U. S. Route (square symbol)
State Route (circle symbol)



USGS
Historical File
Topographic Division

POPLAR, IDAHO
N4330-W11137.5/7.5

1951
PHOTOREVISED 1979
DMA 3671 1/2 SW-SERIES V893

Revisions shown in purple and woodland compiled from
aerial photographs taken 1976 and other source data
This information not field checked. Map edited 1979

APR 16 1980
1832