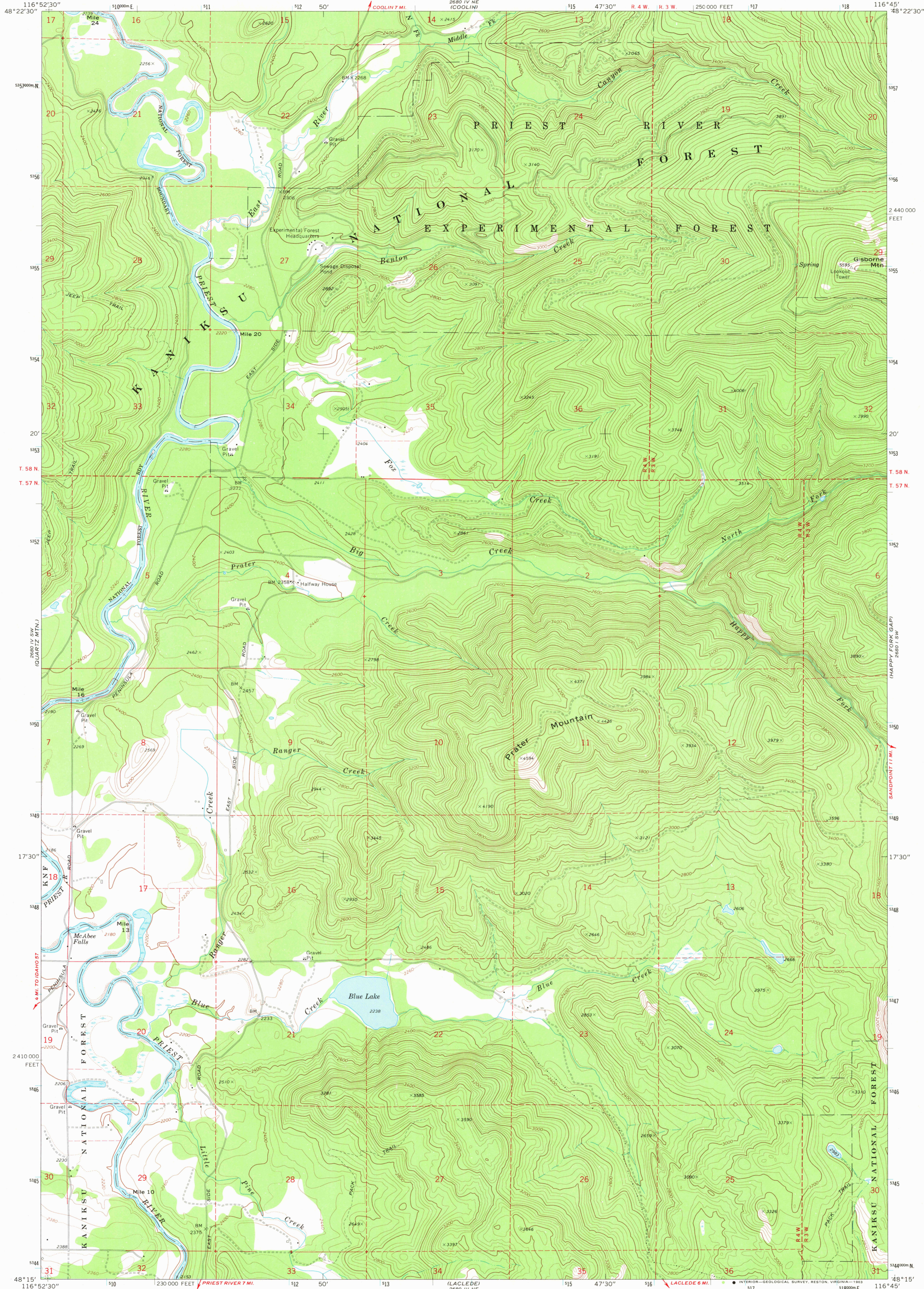


2680 IV NW
(CUTLER B.M.)

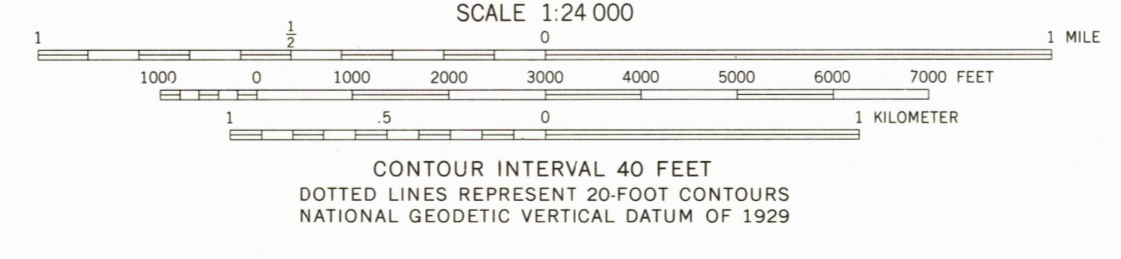
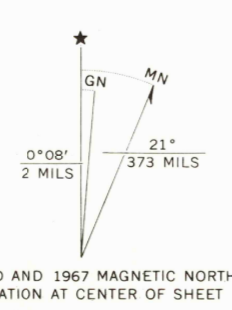
UNITED STATES
DEPARTMENT OF THE INTERIOR
GEOLOGICAL SURVEY

PRATER MTN. QUADRANGLE
IDAHO-BONNER CO.
7.5 MINUTE SERIES (TOPOGRAPHIC)

2680 I NW
(MOUNT CASEY)



Mapped, edited, and published by the Geological Survey
Control by USGS and USC&GS
Topography by photogrammetric methods from aerial photographs taken 1966. Field checked 1967
Polyconic projection. 1927 North American datum 10,000-foot grid based on Idaho coordinate system, west zone
1000-meter Universal Transverse Mercator grid ticks, zone 11, shown in blue
To place on the predicted North American Datum 1983 move the projection lines 13 meters north and 78 meters east as shown by dashed corner ticks
Fine red dashed lines indicate selected fence lines
There may be private inholdings within the boundaries of the National or State reservations shown on this map



ROAD CLASSIFICATION

Light-duty road, all weather	Unimproved road, fair or dry weather
Improved surface	



PRATER MTN., IDAHO
N4815—W11645/7.5

1967

DMA 2680 IV SE—SERIES V893

FOR SALE BY U. S. GEOLOGICAL SURVEY, DENVER, COLORADO 80225, OR RESTON, VIRGINIA 22092
A FOLDER DESCRIBING TOPOGRAPHIC MAPS AND SYMBOLS IS AVAILABLE ON REQUEST

APR 11 1988

1000