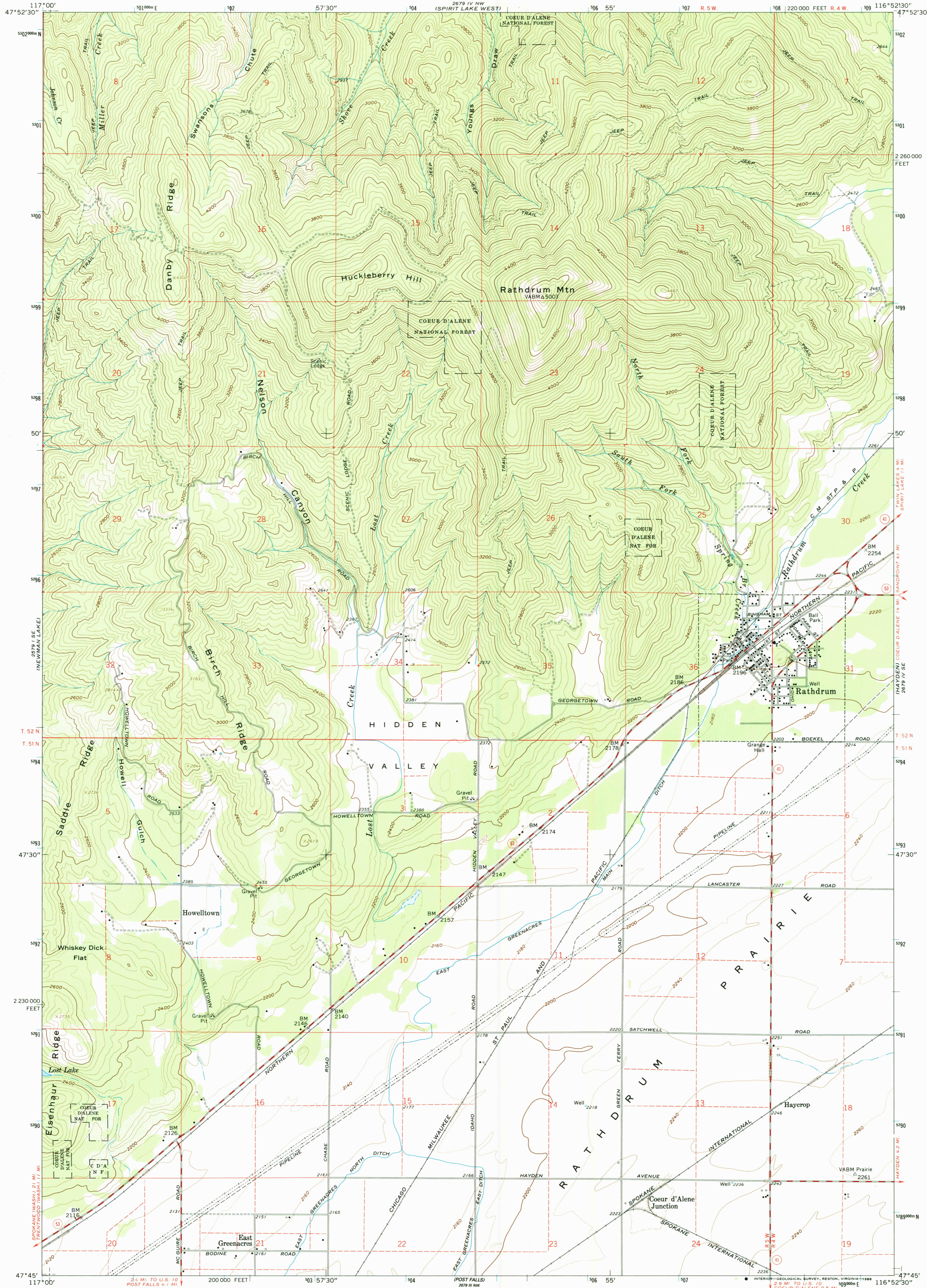


UNITED STATES
DEPARTMENT OF THE INTERIOR
GEOLOGICAL SURVEY

RATHDRUM QUADRANGLE
IDAHO-KOOTENAI CO.
7.5 MINUTE SERIES (TOPOGRAPHIC)



Mapped, edited, and published by the Geological Survey

Control by USGS and USC&GS

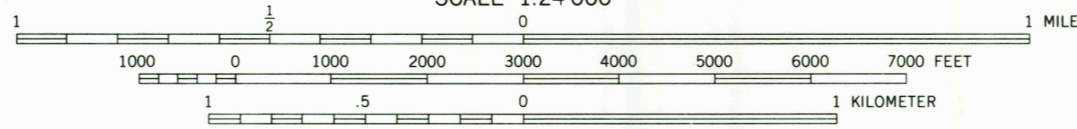
Topography by photogrammetric methods from aerial photographs taken 1958. Field checked 1961

Polyconic projection. 1927 North American datum 10,000-foot grid based on Idaho coordinate system, west zone 1000-meter Universal Transverse Mercator grid ticks, zone 11, shown in blue

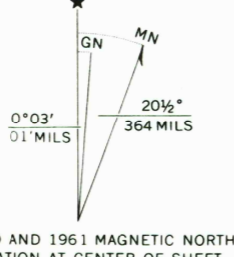
To place on the predicted North American Datum 1983 move the projection lines 14 meters north and 78 meters east as shown by dashed corner ticks

Find red dashed lines indicate selected fence lines

There may be private inholdings within the boundaries of the National or State reservations shown on this map



CONTOUR INTERVAL 40 FEET
DOTTED LINES REPRESENT 20-FOOT CONTOURS
NATIONAL GEODETIC VERTICAL DATUM OF 1929



UTM GRID AND 1961 MAGNETIC NORTH DECLINATION AT CENTER OF SHEET



ROAD CLASSIFICATION
Medium-duty
Light-duty
Unimproved dirt

State Route

RATHDRUM, IDAHO
SW/4 SPIRIT LAKE 15' QUADRANGLE
47116-G8-TF-024

1961
DMA 2679 IV SW-SERIES V893

USGS NMD HISTORICAL MAP
APR 15 1986
REC'D FILE COPY

THIS MAP COMPLIES WITH NATIONAL MAP ACCURACY STANDARDS
FOR SALE BY U.S. GEOLOGICAL SURVEY, DENVER, COLORADO 80225, OR RESTON, VIRGINIA 22092
A FOLDER DESCRIBING TOPOGRAPHIC MAPS AND SYMBOLS IS AVAILABLE ON REQUEST