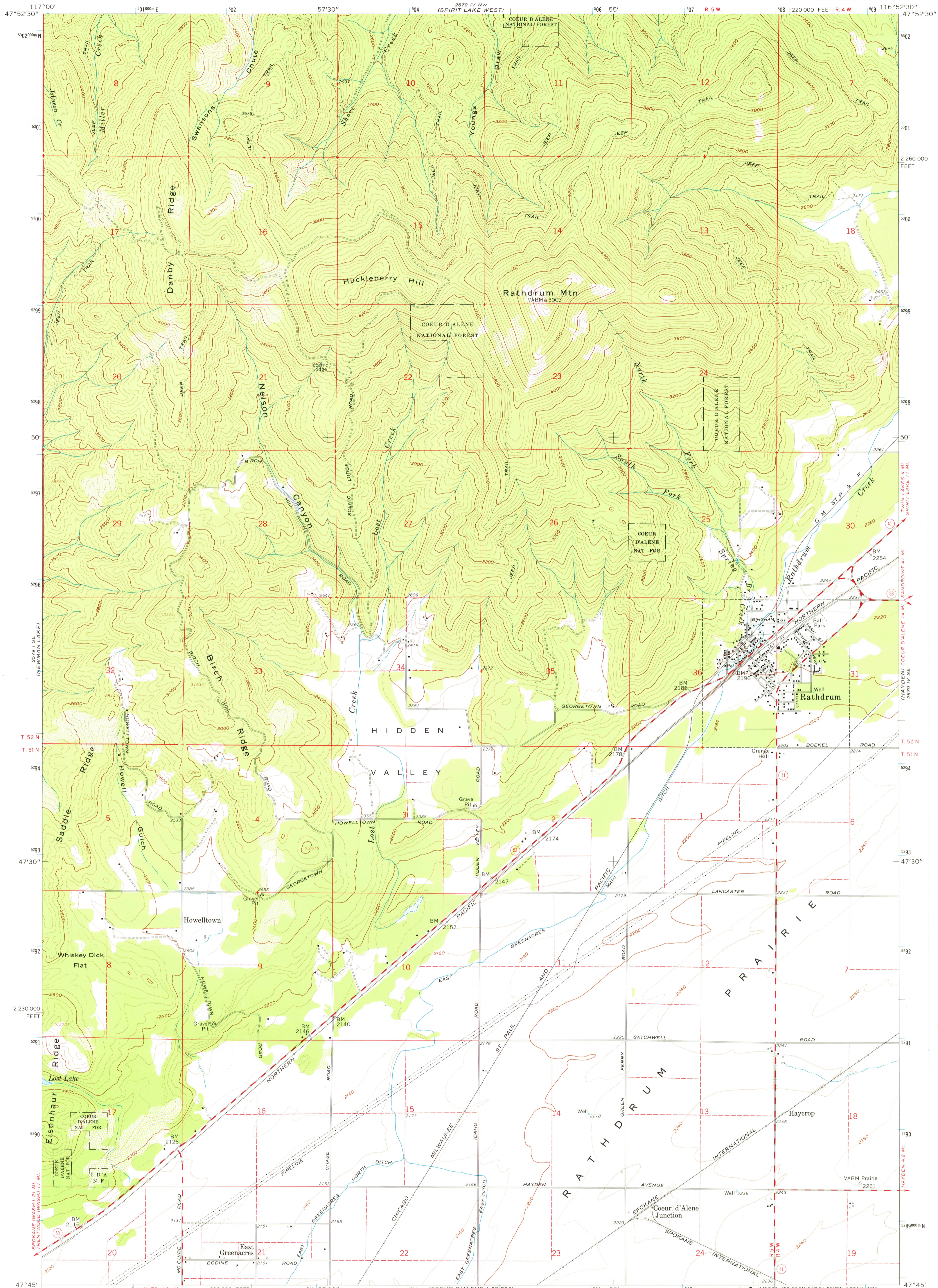
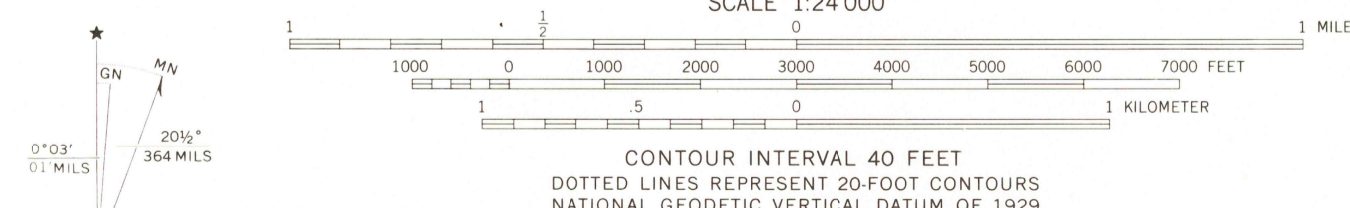


UNITED STATES  
DEPARTMENT OF THE INTERIOR  
GEOLOGICAL SURVEY

RATHDRUM QUADRANGLE  
IDAHO-KOOTENAI CO.  
7.5 MINUTE SERIES (TOPOGRAPHIC)  
SW 4 SPIRIT LAKE 15' QUADRANGLE



Mapped, edited, and published by the Geological Survey  
Control by USGS and USC&GS  
Topography by photogrammetric methods from aerial  
photographs taken 1958. Field checked 1961.  
Polyconic projection. 1927 North American datum  
10,000-foot grid based on Idaho coordinate system, west zone  
1000-meter Universal Transverse Mercator grid ticks,  
zone 11, shown in blue  
Fine red dashed lines indicate selected fence lines  
National Forest shown by proclamation boundary  
Private ownership not shown within National Forest



ROAD CLASSIFICATION  
Medium-duty ——— Light-duty ———  
Unimproved dirt - - - - -  
State Route (S) (41)

RATHDRUM, IDAHO  
SW 4 SPIRIT LAKE 15' QUADRANGLE  
N4745-W11652.5/7.5

USGS  
Historical File  
Topographic Division  
1961  
AMS 2679 IV SW-SERIES V893

THIS MAP COMPLIES WITH NATIONAL MAP ACCURACY STANDARDS  
FOR SALE BY U.S. GEOLOGICAL SURVEY, DENVER, COLORADO 80225, OR RESTON, VIRGINIA 22092  
A FOLDER DESCRIBING TOPOGRAPHIC MAPS AND SYMBOLS IS AVAILABLE ON REQUEST

1800  
MAR 15 1977