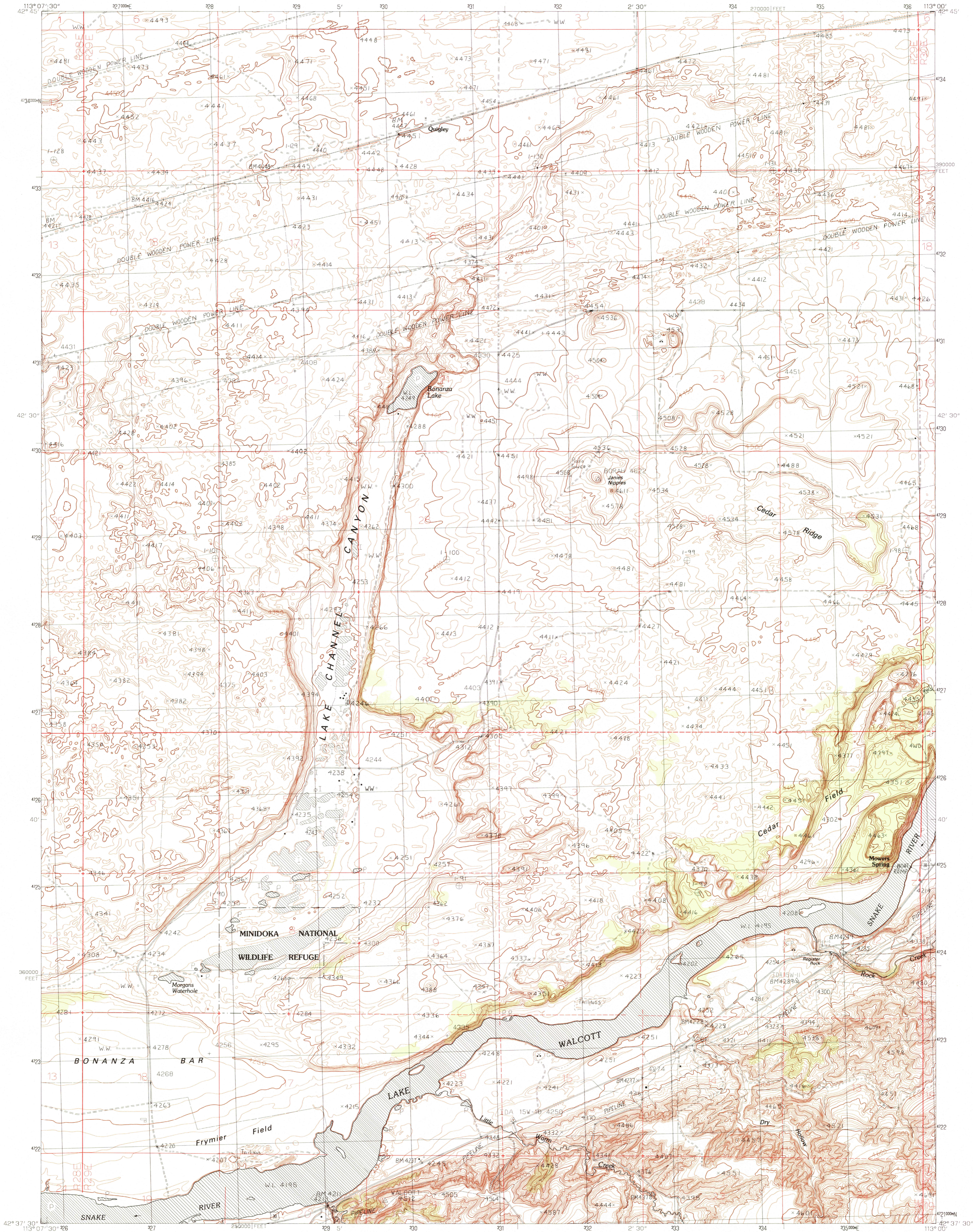


UNITED STATES
DEPARTMENT OF THE INTERIOR
GEOLOGICAL SURVEY

REGISTER ROCK QUADRANGLE
IDAHO-POWER CO.
7.5 MINUTE SERIES (TOPOGRAPHIC)



PRODUCED BY THE UNITED STATES GEOLOGICAL SURVEY
CONTROL BY USGS, NOS/NOAA
COMPILED FROM AERIAL PHOTOGRAPHS TAKEN 1976
FIELD CHECKED 1980 MAP EDITED 1984
PROJECTION TRANSVERSE MERCATOR
GRID: 1000-METER UNIVERSAL TRANSVERSE MERCATOR ZONE 12
10,000-FOOT STATE GRID TICS IDAHO, EAST ZONE
UTM GRID DECLINATION 174° WEST
1984 MAGNETIC NORTH DECLINATION 16° EAST
VERTICAL DATUM NATIONAL GEODETIC VERTICAL DATUM OF 1929
HORIZONTAL DATUM 1927 NORTH AMERICAN DATUM
To place on the predicted North American Datum of 1983, move
the projection lines as shown by dashed corner ticks
(13 meters north and 68 meters east)
There may be private inholdings within the boundaries of any
Federal and State Reservations shown on this map

PROVISIONAL MAP
Produced from original
manuscript drawings. Informa-
tion shown as of date of
field check.

SCALE 1:24 000
1 000 0 1000 2000 3000 4000 5000 6000 7000 FEET
1 0 5 10 KILOMETER
CONTOUR INTERVAL 10 FEET
NATIONAL GEODETIC VERTICAL DATUM OF 1929
THIS MAP COMPLIES WITH NATIONAL MAP ACCURACY STANDARDS
FOR SALE BY U.S. GEOLOGICAL SURVEY, DENVER, COLORADO 80225
OR RESTON, VIRGINIA 22092

1	2	3
4	5	6
7	8	

ADJOINING 7.5 QUADRANGLE NAMES

1	2	3
4	5	6
7	8	

1 Battlement Butte
2 Pillar Butte SE
3 American Falls SW
4 Gifford Spring
5 Neely
6 North Chapin Mtn
7 Badger Peak
8 Rockland West

ROAD LEGEND
Improved Road
Unimproved Road
Trail
Interstate Route U.S. Route State Route

REGISTER ROCK, IDAHO
PROVISIONAL EDITION 1984

42113-F1-TF-024