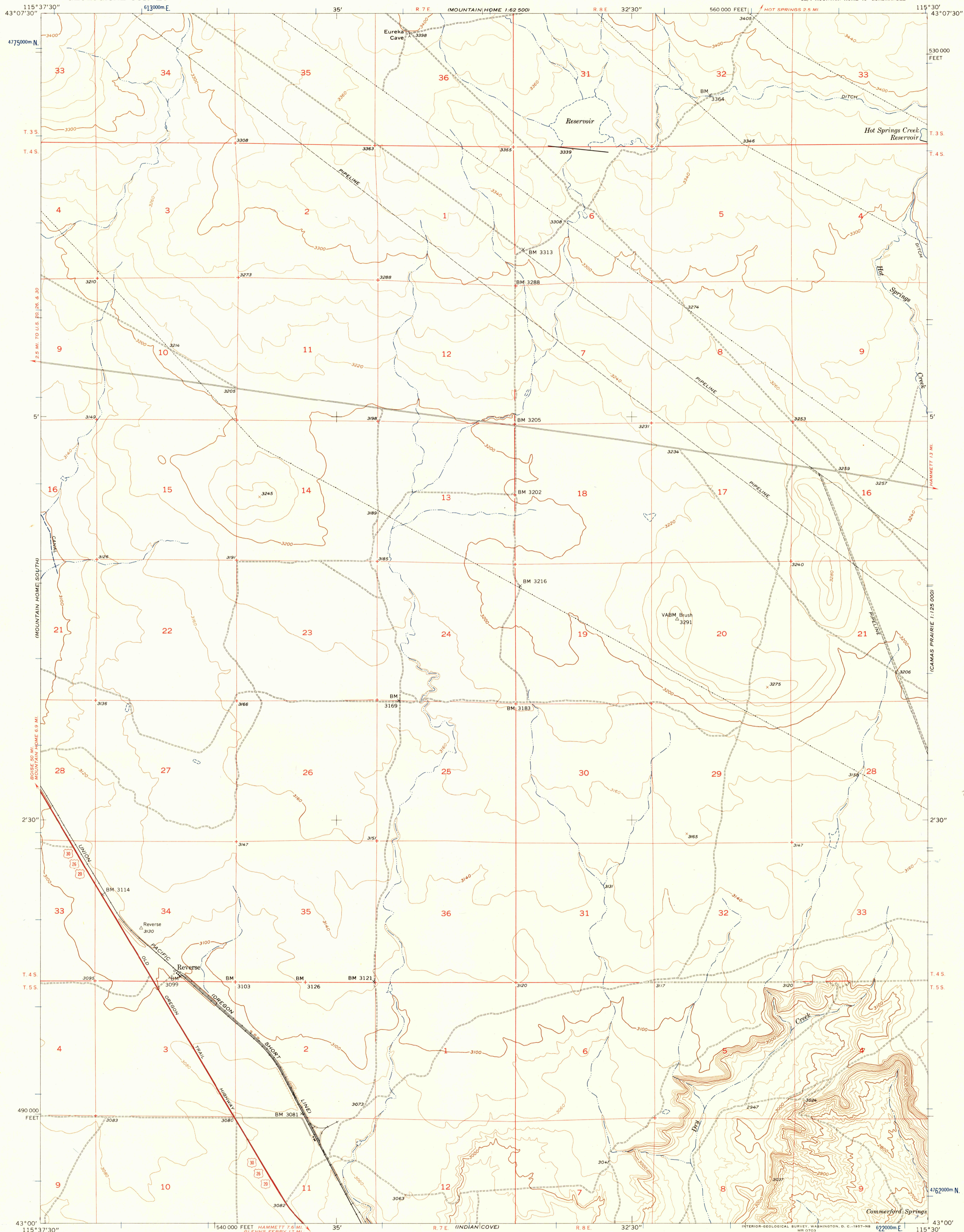


UNITED STATES  
DEPARTMENT OF THE INTERIOR  
GEOLOGICAL SURVEY

REVERSE QUADRANGLE  
IDAHO-ELMORE CO.  
7.5 MINUTE SERIES (TOPOGRAPHIC)  
SE/4 MOUNTAIN HOME 15' QUADRANGLE

(CAMAS PRAIRIE)  
1:25,000

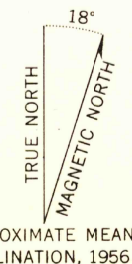


U.S.G.S.  
FILE COPY  
Topographic Division

Mapped, edited, and published by the Geological Survey  
Control by USGS and USC&GS

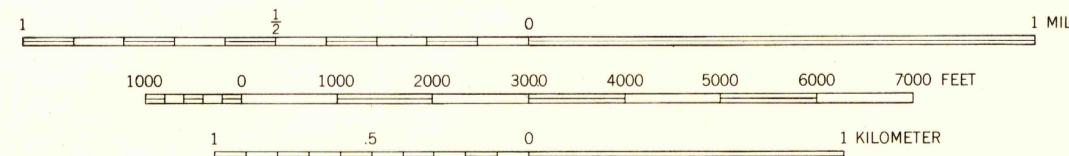
Topography from aerial photographs by Kelsh plotter  
Aerial photographs taken 1954. Field check 1956

Polygonic projection. 1927 North American datum  
10,000-foot grid based on Idaho coordinate system, west zone  
1000-meter Universal Transverse Mercator grid ticks,  
zone 11, shown in blue



APPROXIMATE MEAN  
DECLINATION, 1956

SCALE 1:24000



CONTOUR INTERVAL 20 FEET  
DATUM IS MEAN SEA LEVEL

USGS  
Historical File  
Topographic Division



QUADRANGLE LOCATION

ROAD CLASSIFICATION  
Heavy-duty ——— Light-duty ———  
Unimproved dirt - - - - -  
U. S. Route

U.S.G.S.  
FILE COPY  
Topographic Division

REVERSE, IDAHO  
SE/4 MOUNTAIN HOME 15' QUADRANGLE  
N4300—W11530/7.5

1956

THIS MAP COMPLIES WITH NATIONAL MAP ACCURACY STANDARDS  
FOR SALE BY U. S. GEOLOGICAL SURVEY, DENVER 2, COLORADO OR WASHINGTON 25, D. C.  
A FOLDER DESCRIBING TOPOGRAPHIC MAPS AND SYMBOLS IS AVAILABLE ON REQUEST

NOV - 5 1957

1785