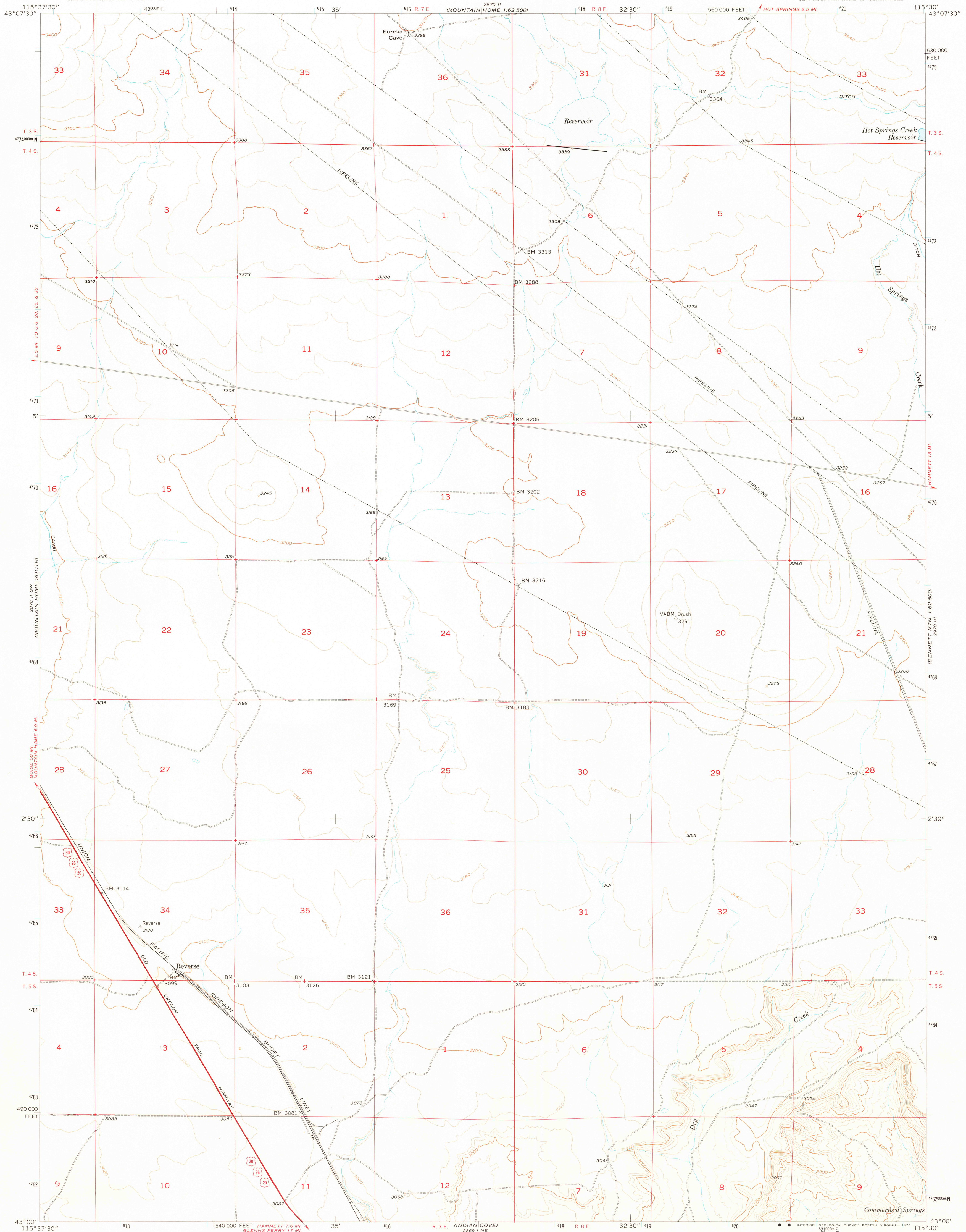
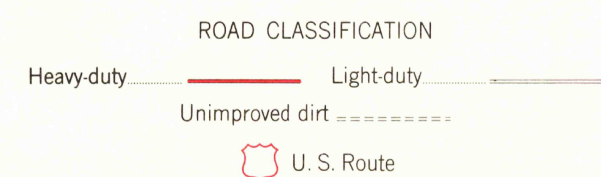
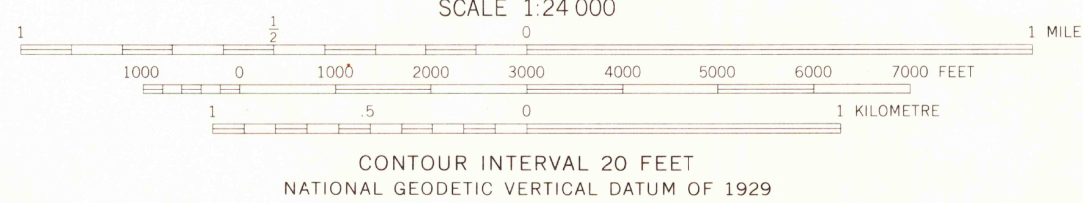
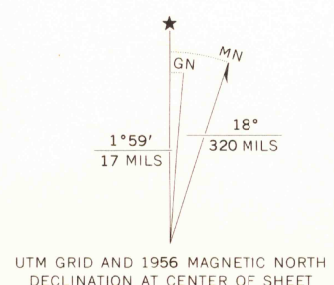


UNITED STATES  
DEPARTMENT OF THE INTERIOR  
GEOLOGICAL SURVEY

REVERSE QUADRANGLE  
IDAHO-ELMORE CO.  
7.5 MINUTE SERIES (TOPOGRAPHIC)  
SE/4 MOUNTAIN HOME 15' QUADRANGLE



Mapped, edited, and published by the Geological Survey  
Control by USGS and USC&GS  
Topography from aerial photographs by Kelsh plotter  
Aerial photographs taken 1954. Field check 1956  
Polyconic projection. 1927 North American datum  
10,000-foot grid based on Idaho coordinate system, west zone  
1000-metre Universal Transverse Mercator grid ticks,  
zone 11, shown in blue



REVERSE, IDAHO  
SE/4 MOUNTAIN HOME 15' QUADRANGLE  
N4300-W11530/7.5  
1956

MAR 29 1976

THIS MAP COMPLIES WITH NATIONAL MAP ACCURACY STANDARDS  
FOR SALE BY U.S. GEOLOGICAL SURVEY, DENVER, COLORADO 80225, OR RESTON, VIRGINIA 22092  
A FOLDER DESCRIBING TOPOGRAPHIC MAPS AND SYMBOLS IS AVAILABLE ON REQUEST

USGS  
Historical File  
Topographic Division

AMS 2870 II SE-SERIES V893