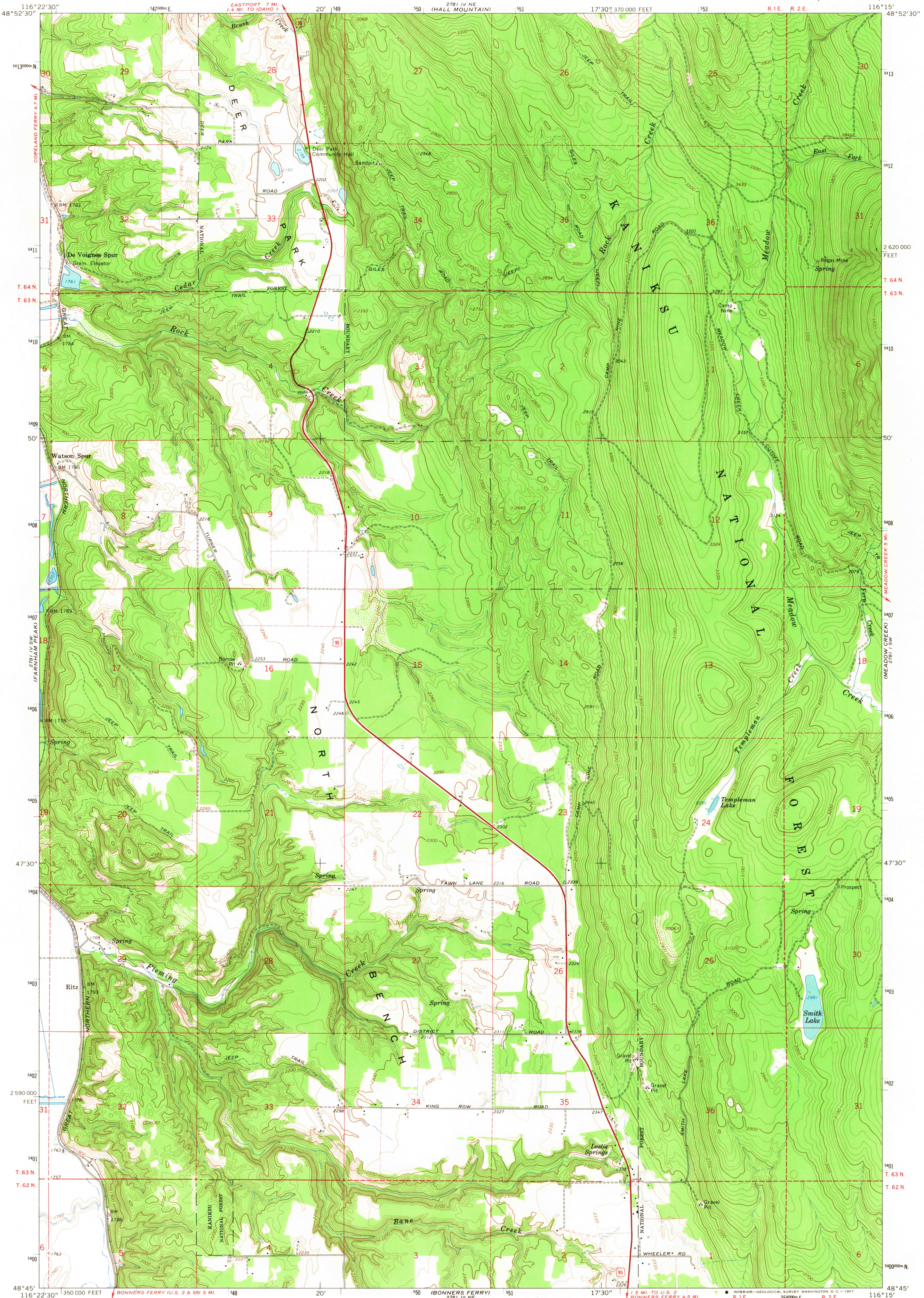


5814 NW
COPELAND

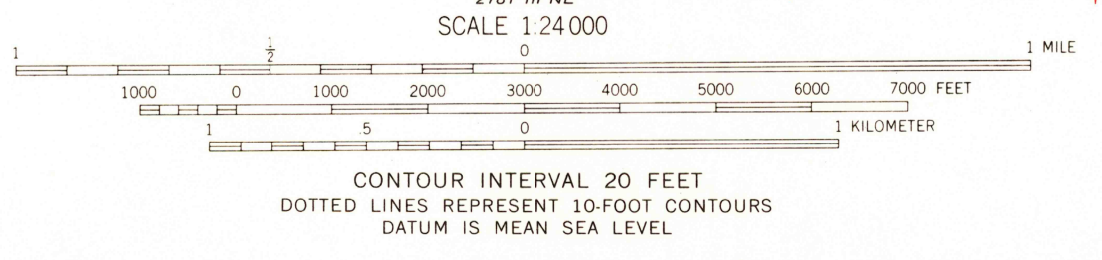
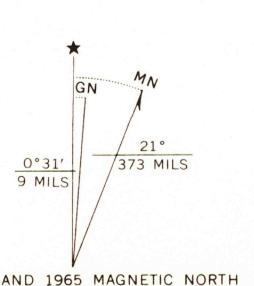
UNITED STATES
DEPARTMENT OF THE INTERIOR
GEOLOGICAL SURVEY

RITZ QUADRANGLE
IDAHO—BOUNDARY CO.
7.5 MINUTE SERIES (TOPOGRAPHIC)

2781 NW
EASTPOINT



Mapped, edited, and published by the Geological Survey
Control by USGS and USC&GS
Topography by photogrammetric methods from aerial
photographs taken 1963. Field checked 1965
Polyconic projection. 1927 North American datum
10,000-foot grid based on Idaho coordinate system,
west zone
1000-meter Universal Transverse Mercator grid ticks,
zone 11, shown in blue
Fine red dashed lines indicate selected fence lines



USGS
Historical File
Topographic Division

ROAD CLASSIFICATION
Heavy-duty
Light-duty
Unimproved dirt
U. S. Route

U.S.G.S.
QUADRANGLE DESIGN
TOPOGRAPHIC DIVISION

RITZ, IDAHO
N4845-W11615/7.5
1965

THIS MAP COMPLIES WITH NATIONAL MAP ACCURACY STANDARDS
FOR SALE BY U. S. GEOLOGICAL SURVEY, DENVER, COLORADO 80225, OR WASHINGTON, D. C. 20242
A FOLDER DESCRIBING TOPOGRAPHIC MAPS AND SYMBOLS IS AVAILABLE ON REQUEST

AMS 2781 IV SE—SERIES V893

2705
JUL 18 1967