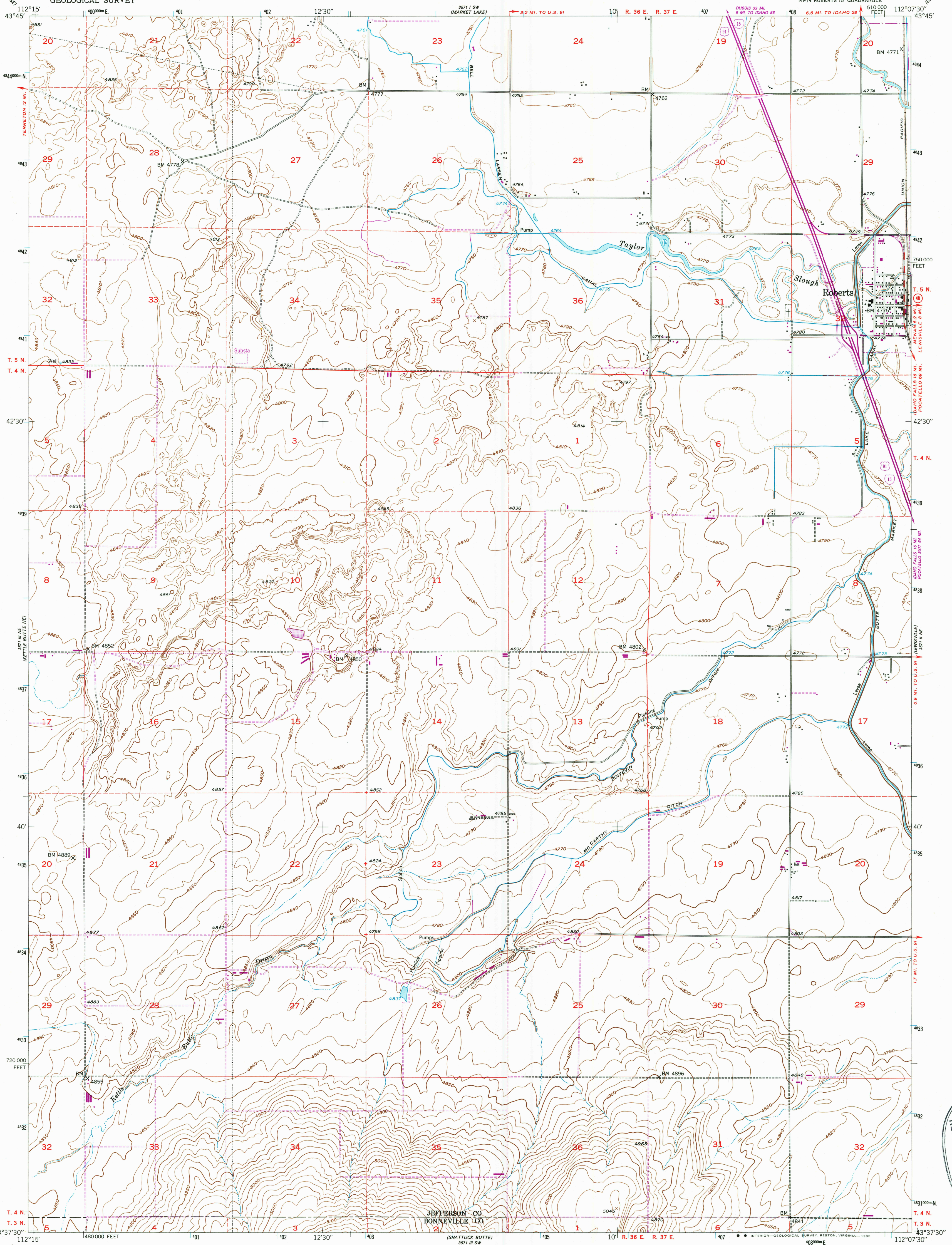
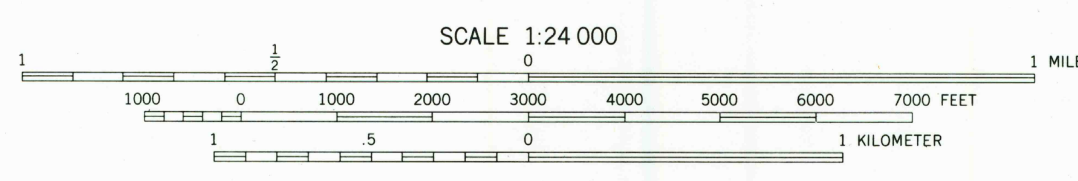
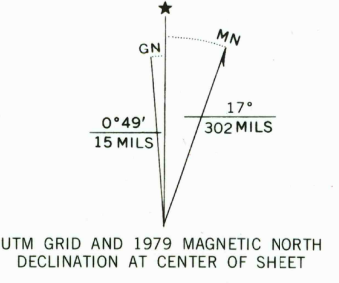


UNITED STATES
DEPARTMENT OF THE INTERIOR
GEOLOGICAL SURVEY

ROBERTS QUADRANGLE
IDAHO
7.5 MINUTE SERIES (TOPOGRAPHIC)



Mapped, edited, and published by the Geological Survey
Control by USGS and NOS/NOAA
Culture and drainage by multiplex methods
from aerial photographs taken 1946
Topography by plane-table methods 1948-1949
Polyconic projection. 1927 North American datum
10,000-foot grid based on Idaho coordinate system,
east zone.
Dashed land lines indicate approximate location
1000-meter Universal Transverse Mercator grid ticks,
zone 12, shown in blue
To place on the predicted North American Datum 1983,
move the projection lines 12 meters north and
66 meters east as shown by dashed corner ticks



CONTOUR INTERVAL 10 FEET
DOTTED LINES REPRESENT HALF INTERVAL CONTOURS
NATIONAL GEODETIC VERTICAL DATUM OF 1929

THIS MAP COMPLIES WITH NATIONAL MAP ACCURACY STANDARDS
FOR SALE BY U. S. GEOLOGICAL SURVEY, DENVER, COLORADO 80225, OR RESTON, VIRGINIA 22092
A FOLDER DESCRIBING TOPOGRAPHIC MAPS AND SYMBOLS IS AVAILABLE ON REQUEST

ROAD CLASSIFICATION

- Primary highway, all weather, hard surface
- Secondary highway, all weather, hard surface
- Light-duty road, all weather, improved surface
- Unimproved road, fair or dry weather

U. S. Route
 State Route
 Interstate Route

ROBERTS, IDAHO
NW/4 ROBERTS 15' QUADRANGLE
43112-F2-TF-024

1949
PHOTOREVISED 1979
DMA 5571 II NW-SERIES V693

Revisions shown in purple compiled from aerial photographs taken 1976 and other source data. This information not field checked. Map edited 1979

USGS AND HISTORICAL MAP
JAN 24 1985
REC'D FILE COPY