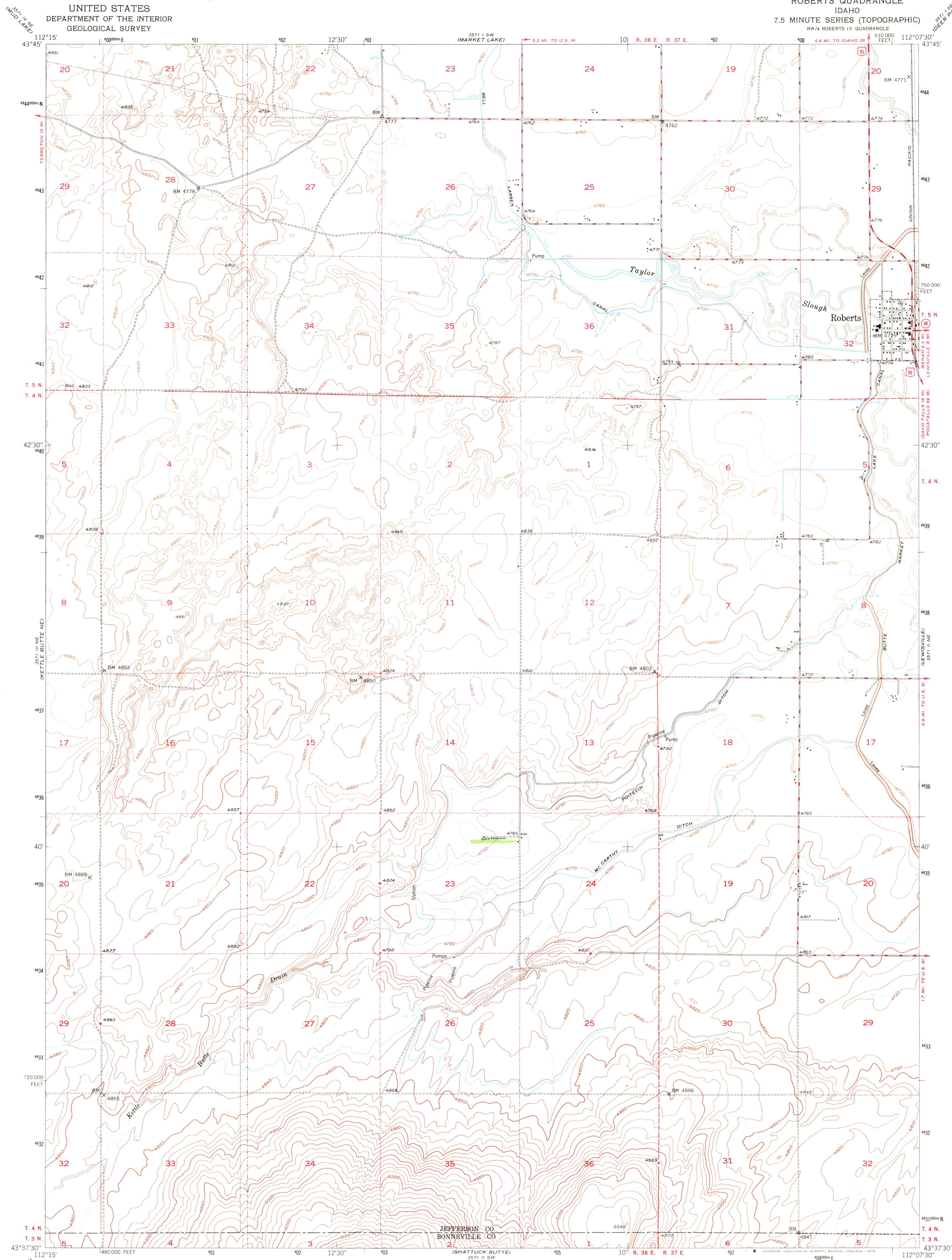
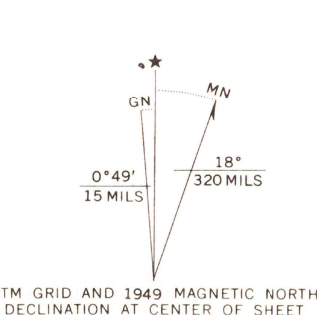


UNITED STATES
DEPARTMENT OF THE INTERIOR
GEOLOGICAL SURVEY

ROBERTS QUADRANGLE
IDAHO
7.5 MINUTE SERIES (TOPOGRAPHIC)
NW/4 ROBERTS 15' QUADRANGLE



Maped, edited, and published by the Geological Survey
Control by USGS and USC&GS
Culture and drainage by multiplex methods
from aerial photographs taken 1946
Topography by plane-table methods 1948-1949
Polyconic projection. 1927 North American datum
10,000-foot grid based on Idaho coordinate system,
east zone.
Dashed land lines indicate approximate location
1000-metre Universal Transverse Mercator grid ticks,
zone 12, shown in blue



SCALE 1:24,000
1 0 1000 2000 3000 4000 5000 6000 7000 FEET
1 5 10 KILOMETRE
CONTOUR INTERVAL 10 FEET
DOTTED LINES REPRESENT HALF INTERVAL CONTOURS
NATIONAL GEODETIC VERTICAL DATUM OF 1929
THIS MAP COMPLIES WITH NATIONAL MAP ACCURACY STANDARDS
FOR SALE BY U. S. GEOLOGICAL SURVEY, DENVER, COLORADO 80225, OR RESTON, VIRGINIA 22092
A FOLDER DESCRIBING TOPOGRAPHIC MAPS AND SYMBOLS IS AVAILABLE ON REQUEST

ROAD CLASSIFICATION
HARD-SURFACE ALL WEATHER ROADS DRY WEATHER ROADS
Heavy-duty LANE 6 LANE Improved dirt LANE 6 LANE
Medium-duty LANE 6 LANE Unimproved dirt LANE 6 LANE
Loose-surface, graded, or narrow hard-surface LANE 6 LANE
U. S. Route State Route
ROBERTS, IDAHO
NW/4 ROBERTS 15' QUADRANGLE
N4337.5—W11207.5/7.5
1949
AMS 3571 II NW—SERIES V893

1670
SEP 10 1975