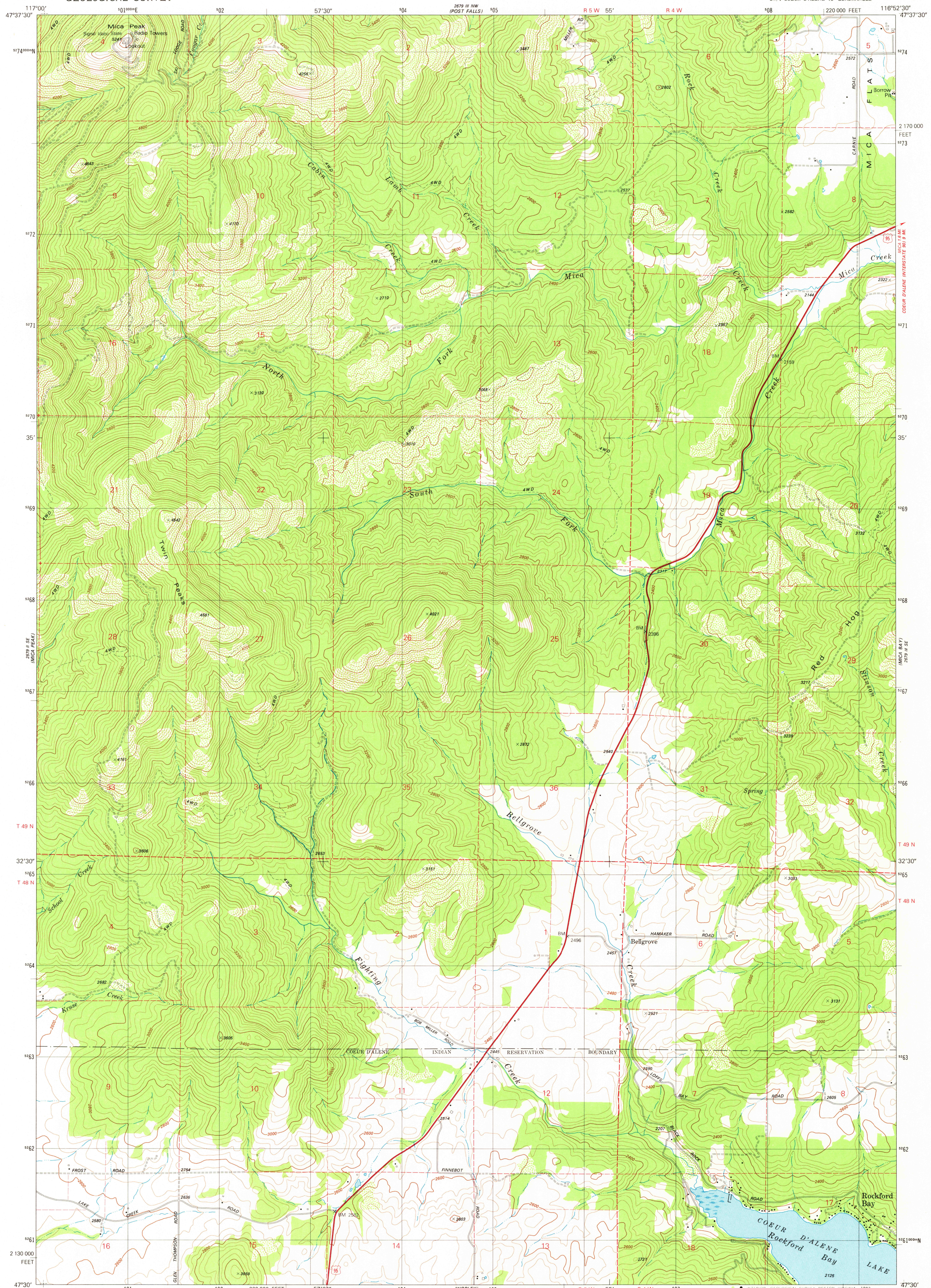


279 1/4 NE
(LIBERTY LAKE)

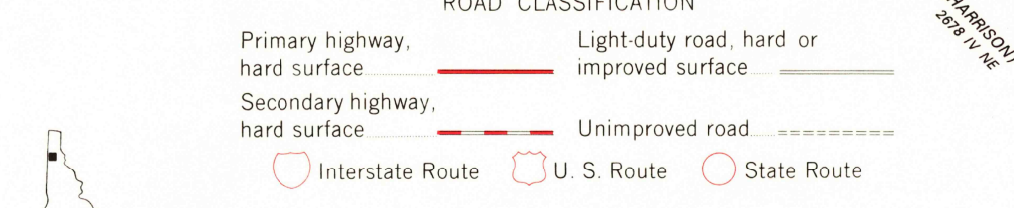
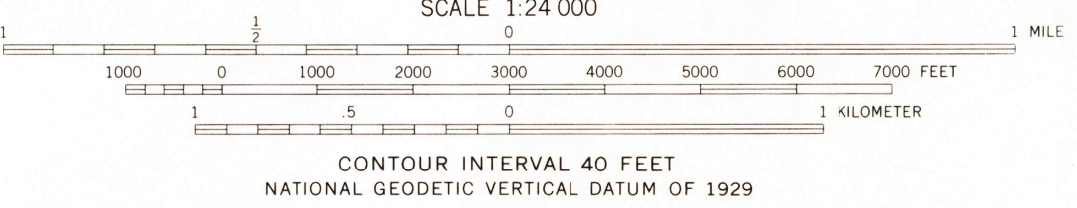
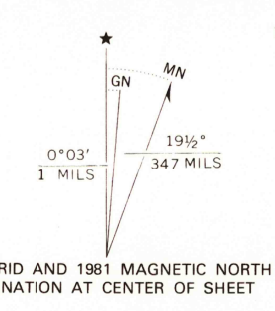
UNITED STATES
DEPARTMENT OF THE INTERIOR
GEOLOGICAL SURVEY

ROCKFORD BAY QUADRANGLE
IDAHO-KOOTENAI CO.
7.5 MINUTE SERIES (TOPOGRAPHIC)
SW 1/4 COEUR D'ALENE 15' QUADRANGLE

279 1/4 SE
(COEUR D'ALENE)



Mapped, edited, and published by the Geological Survey
Control by USGS and NOS/NOAA
Topography by photogrammetric methods from aerial photographs taken 1975. Field checked 1976. Map edited 1981
Projection and 10,000-foot grid ticks: Idaho coordinate system, west zone (transverse Mercator)
1000-meter Universal Transverse Mercator grid, zone 11 1927 North American Datum
To place on the predicted North American Datum 1983 move the projection lines 14 meters north and 78 meters east as shown by dashed corner ticks
Fine red dashed lines indicate selected fence and field lines where generally visible on aerial photographs
This information is unchecked
There may be private inholdings within the boundaries of the National or State reservations shown on this map



ROAD CLASSIFICATION

Primary highway, hard surface	Light-duty road, hard or improved surface
Secondary highway, hard surface	Unimproved road
Interstate Route	U. S. Route
	State Route

ROCKFORD BAY, IDAHO
SW 1/4 COEUR D'ALENE 15' QUADRANGLE
N4730-W11652.5/7.5
1981
DMA 2679 III SW—SERIES V893

APK 6 1982
2000