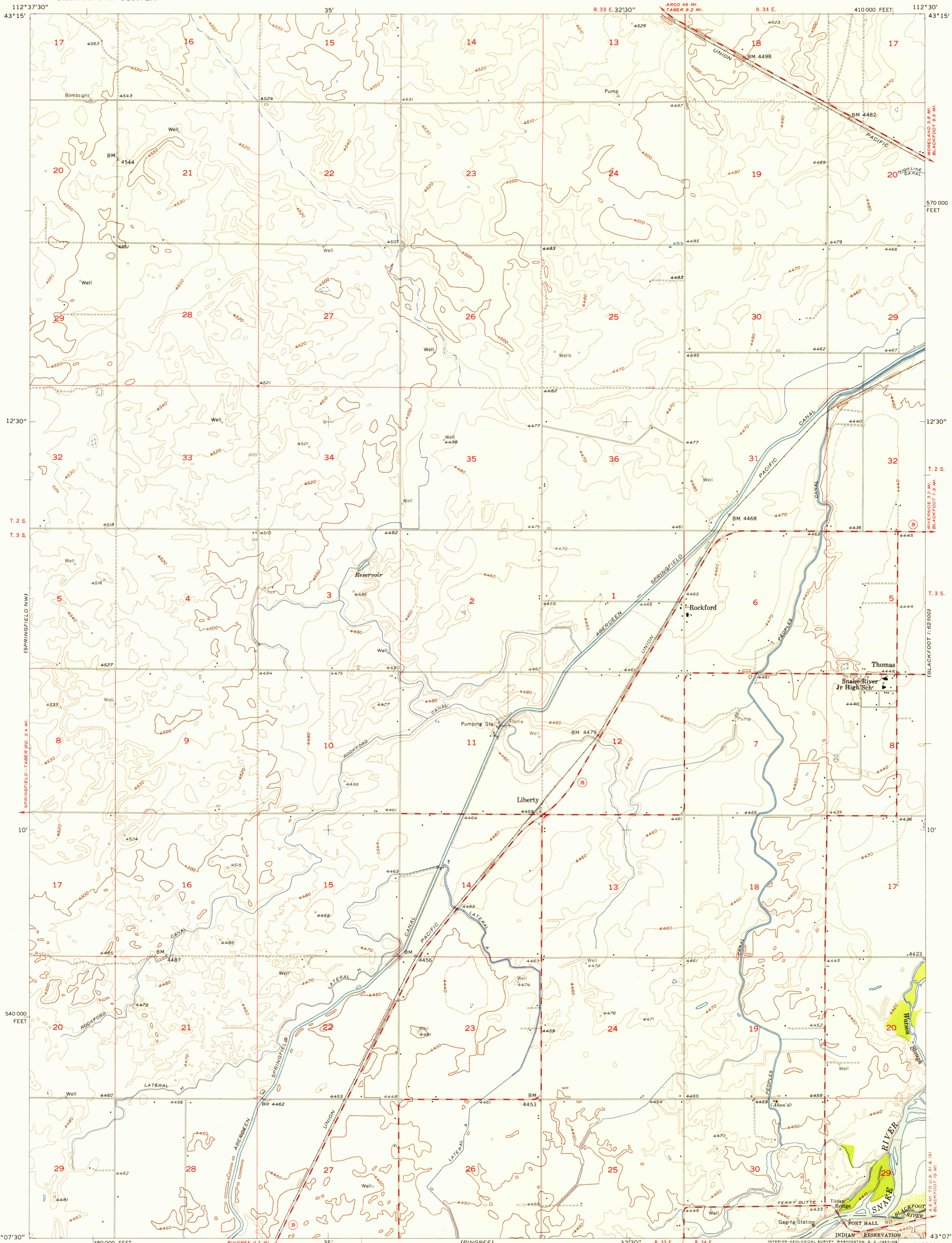
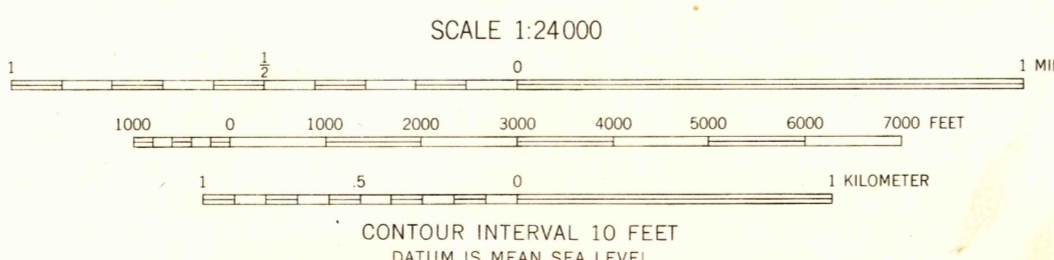
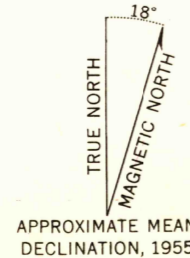


(BALDY KNOLL)



Mapped, edited, and published by the Geological Survey
Control by USGS and USC&GS
Topography from aerial photographs by Kelsh plotter
and by planetable surveys 1955. Aerial photographs taken 1950
Polyconic projection. 1927 North American datum
10,000-foot grid based on Idaho coordinate system, east zone



USGS
Historical File
Topographic Division

ROAD CLASSIFICATION

Heavy-duty	Light-duty
Medium-duty	Unimproved dirt

U.S. Route (square symbol)
State Route (circle symbol)



ROCKFORD, IDAHO
N4307.5-W11230/7.5

THIS MAP COMPLIES WITH NATIONAL MAP ACCURACY STANDARDS
FOR SALE BY U. S. GEOLOGICAL SURVEY, DENVER 2, COLORADO OR WASHINGTON 25, D. C.
A FOLDER DESCRIBING TOPOGRAPHIC MAPS AND SYMBOLS IS AVAILABLE ON REQUEST

1955

JAN 18 1957